



## Pemberton Gardens, , Romford, RM6 6SJ

- FOUR/FIVE BEDROOM
- CORNER PLOT
- FIRST FLOOR BATHROOM
- LARGE GARAGE TO REAR
- SOUGHT AFTER LOCATION
- END OF TERRACE HOUSE
- DOUBLE SIDE EXTENSION
- OFF STREET PARKING
- CHAIN FREE
- EASY ACCESS TO HIGH ROAD

**Offers In Excess Of £550,000**





## Pemberton Gardens, , Romford, RM6 6SJ



Nestled in the desirable Pemberton Gardens, Chadwell Heath, this charming end-terrace house presents an excellent opportunity for both families and investors alike. Spanning an impressive 1,116 square feet, the property boasts four well-proportioned bedrooms, providing ample space for comfortable living. The versatile layout includes three inviting reception rooms, one of which can easily serve as a ground floor bedroom, catering to various lifestyle needs.

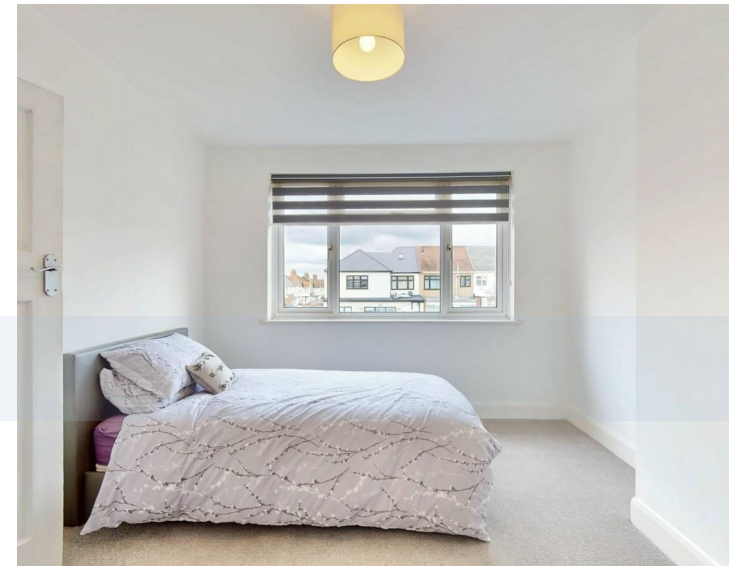
Set on a generous corner plot, this home features a double side extension, enhancing its spaciousness and functionality. The property is further complemented by a large garage located at the rear of the garden, along with off-street parking for two vehicles, ensuring convenience for residents and guests alike. The expansive front garden adds to the appeal, offering a delightful outdoor space for relaxation or play.



Being chain-free, this property is ready for immediate occupancy, making it an ideal choice for those looking to move swiftly. Whether you are seeking a family home with room to grow or a promising investment opportunity, this end-terrace house in Chadwell Heath is sure to meet your needs. With its blend of space, versatility, and potential, it is a must-see for anyone looking to settle in this vibrant community.



# Pemberton Gardens, , Romford, RM6 6SJ



Entrance Hall

Lobby  
10'5 x 6'0

Living Room  
14'1 x 10'10

Kitchen  
9'9 x 6'3

Dining Area  
13'6 x 10'3

Ground Floor Bedroom  
8'9 x 6'3

Bedroom One  
14'0 x 9'0

Bedroom Two  
11'7 x 10'6

Bedroom Three  
9'9 x 6'6

Bedroom Four  
8'5 x 6'3

First Floor Bathroom  
6'11 x 5'10

Rear Garden  
24'5 x 31'2

Garage  
22'0 x 16'1

