

Energy Efficiency Rating	
Current	Potential
78	82

Environmental Impact (CO <sub>2</sub> ) Rating	
Current	Potential

### Viewing Arrangements

Strictly by prior appointment only through Willowgreen Estate Agents  
01653 916600 | Website: [www.willowgreenestateagents.co.uk](http://www.willowgreenestateagents.co.uk)

### Disclaimer

These particulars are thought to be materially correct though their accuracy is not guaranteed and they do not form part of any contract. All measurements are approximate and we have not tested any fitted appliances, electrical or plumbing installation or central heating systems. Floor plans are for illustration purposes only and their accuracy is not guaranteed.

Company Registration Number: 6364398  
England and Wales VAT Reg. No 934616515

## 4, Orchard Gardens, Malton, North Yorkshire, YO17 7NA Guide price £1,250,000

4 Orchard Gardens is an impressive, individually designed six bedroom detached house built by local and reputable builders, Hague Builders circa 2008 tucked away on this very private road off the sought area of Middlecave Road, just a short stroll from the town centre.

Occupying a desirable corner plot and with accommodation of over 3,000 square feet, this home has been extended in recent years creating the perfect family home and in brief comprises; entrance hallway, guest cloakroom, sitting room, kitchen/dining room, utility room, study and impressive garden room with bi-fold doors onto enclosed south facing rear garden. To the first floor there are four spacious bedrooms with a modern house bathroom and en-suite to the master, as well as a walk-in wardrobe. To the second floor there are a further two spacious bedrooms and house bathroom.

Outside, the property has an enclosed south facing garden to the rear aspect which is mainly laid to lawn with a separate area with space for hot tub, perfect for entertaining! There is also an integral garage and driveway parking.

This home is finished to an impressive standard and has a timeless, classic finish. High quality fixtures and fittings used throughout including Villeroy & Boch bathroom fixtures and Miele kitchen appliances.

Malton is a traditional market town which offers a good range of amenities, including shops, restaurants, pubs, tennis courts, swimming pool, gym, cinema and excellent schools. The town is well-placed for access to York (approximately 18 miles), Scarborough (approximately 25 miles) and Leeds (approximately 35 miles). Of particular benefit is the railway station which provides regular services to York and the



01653 916 600 | [enquiries@willowgreenestateagents.co.uk](mailto:enquiries@willowgreenestateagents.co.uk)

6-8 Market St, Malton, North Yorkshire YO17 7LY

Registered Office: 6-8 Market St, Malton, North Yorkshire YO17 7LY | Reg No. 06364398

#### ENTRANCE HALLWAY

Oak flooring throughout with underfloor heating under stairs storage cupboard and power points.

#### GUEST CLOAKROOM

Low flush W/C , wall hung sink basin, extractor.

#### KITCHEN/DINING/LIVING AREA

32'2" x 13'10" (9.81 x 4.22)

Window to front, side aspect, oak flooring, range of fitted wall and base units work surfaces, integrated electric Miele oven, ceramic hob, integrated Miele dishwasher, stainless steel sink with drainer unit and mixer taps, under counter fridge. Space for dining and spacious sitting area with double French doors out onto rear garden, TV point and power points.

#### UTILITY ROOM

9'9" x 7'8" (2.98 x 2.34)

Window to front aspect and door to rear, range of wall and base units with work surfaces, space for fridge/freezer, stainless steel sink and drainer unit with mixer taps, wall mounted combi boiler, extractor, plumbing for washer and space for dryer.

#### STUDY

6'11" x 9'8" (2.11 x 2.95)

Window to rear aspect,

#### SITTING ROOM

14'6" x 13'3" (4.44 x 4.04)

Windows to side aspect, oak flooring, barbas gas fire, TV point, power points and sliding doors to garden room.

#### GARDEN ROOM

18'5" x 25'0" (5.62 x 7.64)

Vaulted ceiling with Velux windows, bi-fold doors onto onto rear garden, and door to side courtyard. Feature stovax log burning fire, TV point, power points.

#### FIRST FLOOR LANDING

Spacious landing with windows and fitted cupboard.

#### MASTER BEDROOM

14'7" x 13'3" (4.45 x 4.05)

Window to rear aspect, fitted wardrobes, walk in wardrobe, TV point, power points, radiator.

#### EN-SUITE TO MASTER BEDROOM

Window to rear aspect, fully tiled, free standing bath tub, double wall hung V & B sink, double Matki shower cubicle, low flush W/C with sensor light, heated towel rail, underfloor heating, extractor.

#### BEDROOM TWO

10'0" x 18'9" (3.05 x 5.73)

Window to front aspect, fitted wardrobes, fitted desk units, power point, radiator, loft hatch.

#### BEDROOM THREE

11'11" x 12'11" (3.64 x 3.95)

Window to front aspect, fitted wardrobes, power points, radiator.

#### BEDROOM FOUR

9'8" x 13'10" (2.95 x 4.22)

Window to rear aspect, fitted wardrobes, power points, radiator.

#### FAMILY BATHROOM

Window to side aspect, fully tiled walk in Matki shower cubicle, wall hung double sink, fitted cabinets, tiled enclosed bath tub, low flush W/C with sensor light, heated towel rail, extractor, under floor heating.

#### SECOND FLOOR LANDING

Velux windows to front and rear aspect, airing cupboard, power points.

#### BEDROOM FIVE

13'7" x 13'4" (4.15 x 4.08)

Window to side aspect, fully boarded eaves storage, loft hatch, power points, radiator.

#### BEDROOM SIX

13'7" x 9'10" (4.16 x 3.00)

Velux window to rear aspect, fitted wardrobes, power points, radiator.

#### SECOND FLOOR BATHROOM

Velux window to rear aspect, fully tiled, wall hung sink with fitted vanity cabinet, tiled enclosed bath, low flush W/C, underfloor heating, heating towel radiator and extractor.

#### EXTERIOR

Outside, the property has an encased garden to rear aspect which is mainly laid to lawn with a separate area with space for hot tub, perfect for entertaining! There is also a garage, shed, log store and driveway parking.

#### GARAGE

10'2" x 18'10" (3.10m x 5.76m )

Remote electric roller shutter door, power and water connection.

#### SERVICES

Gas central heating, underfloor heating on the ground floor, electric heat mats in upstairs bathrooms.

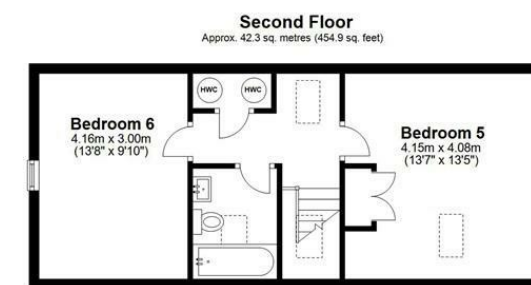
Connection to mains drainage via storage tank.

Fibre broadband available.

#### COUNCIL TAX BAND G

#### TENURE

Freehold.



Total area: approx. 294.3 sq. metres (3168.1 sq. feet)  
**4 Orchard Gardens, Malton**