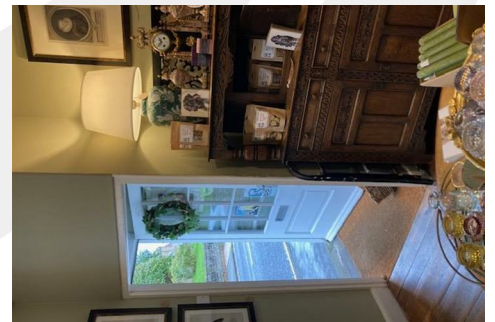




WILLOWGREEN

ESTATE AGENTS



## Shop 17 Church Street York, North Yorkshire YO62 5AD

**£650 Per month**

- Shop to let
- Favourable location just off Helmsley's Market Place
  - 16.4 sq m (177 sq ft)
- Open plan retail space
- Attractive display window
  - Good footfall

A pretty little shop, nestled between the popular Twig & Twine florist and Bowley & Jackson interiors, in a sought after retail parade opposite the Church of All Saints in Helmsley, just off the Market Place.

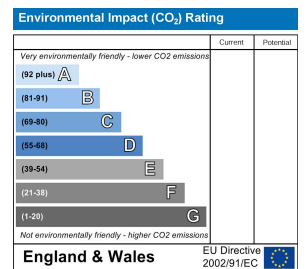
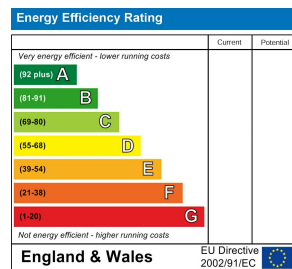
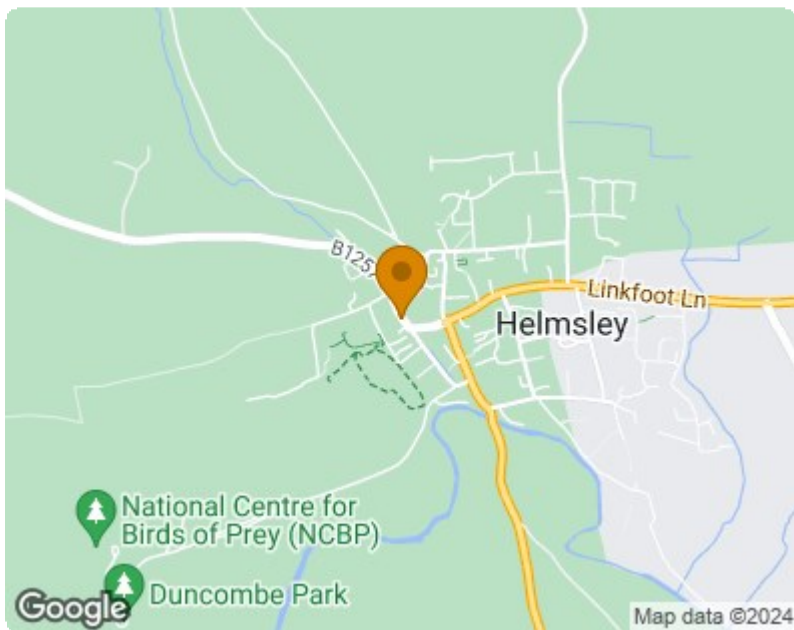
The property provides attractive, open plan retail space, with wooden floors, modern lighting, and a feature display window onto Church Street.

Formerly Castle Emporium, an upmarket interiors, antiques and gift shop, and before that a bustling bakery (Cinnamon Twist).

**GROUND FLOOR SHOP SPACE**

14'2 x 12'8 (4.32m x 3.86m)





01653 916 600 | enquiries@willowgreenestateagents.co.uk

6-8 Market St, Malton, North Yorkshire YO17 7LY

Registered Office: 6-8 Market St, Malton, North Yorkshire YO17 7LY | Reg No. 06364398