



Moore Close, Claypole, Newark, NG23 5AU

welcome to

Moore Close, Claypole, Newark

This spacious four bedroom detached family home is ideally located in the sought after village of Claypole briefly comprising of Entrance, Living room, Kitchen, Utility, Cloakroom, Master bedroom with En-suite, Three further bedrooms, Family bathroom and Gardens, Driveway and Single garage.



Entrance Hall

Leading into the entrance with understairs storage cupboard, radiator and stairs rising to the first floor.

Living Room

11' 4" x 16' 4" max (3.45m x 4.98m max)

A fantastic bay fronted living room with radiator, double doors into the kitchen and double glazed bay window.

Kitchen

10' 6" x 19' 11" (3.20m x 6.07m)

A range of low and eye level units with part tiled walls, electric hob, double oven, sink and drainer, space for fridge/freezer, integrated dishwasher, wine fridge and storage. Additionally the kitchen offers double doors leading into the living room and double glazed French doors to the rear and double glazed window to the rear.

Utility Room

5' 9" x 7' 1" (1.75m x 2.16m)

A range of low and eye level units with part tiled walls, sink and drainer, boiler housing and plumbing for washing machine. uPVC door to the rear.

Wc/Cloakroom

WC and wash hand basin.

First Floor Landing

First floor landing with access to all four bedrooms and family bathroom.

Bedroom One

A fantastic DOUBLE bedroom with built in wardrobes, radiator and double glazed window.

En-Suite

A modern fitted en-suite with WC, wash hand basin, shower, radiator, storage cupboard and obscured double glazed window.

Bedroom Two

8' 1" x 15' 6" (2.46m x 4.72m)

Another DOUBLE bedroom with radiator and double glazed window.

Bedroom Three

8' 8" x 9' 1" (2.64m x 2.77m)

A spacious third bedroom with radiator and double glazed window.

Bedroom Four

11' 2" max x 11' 1" (3.40m max x 3.38m)

A good size fourth bedroom with radiator and double glazed window.

Family Bathroom

A modern three piece family bathroom with part tiled walls, WC, wash hand basin, bath with shower over, radiator and obscured double glazed window.

Outside Front Garden

The front of the property benefits from a driveway to the front, single garage and side gate access.

Rear Garden

The rear of the property is enclosed with timber fencing, paved patio area, part laid to lawn, shed and not overlooked.

Garage

Single garage.

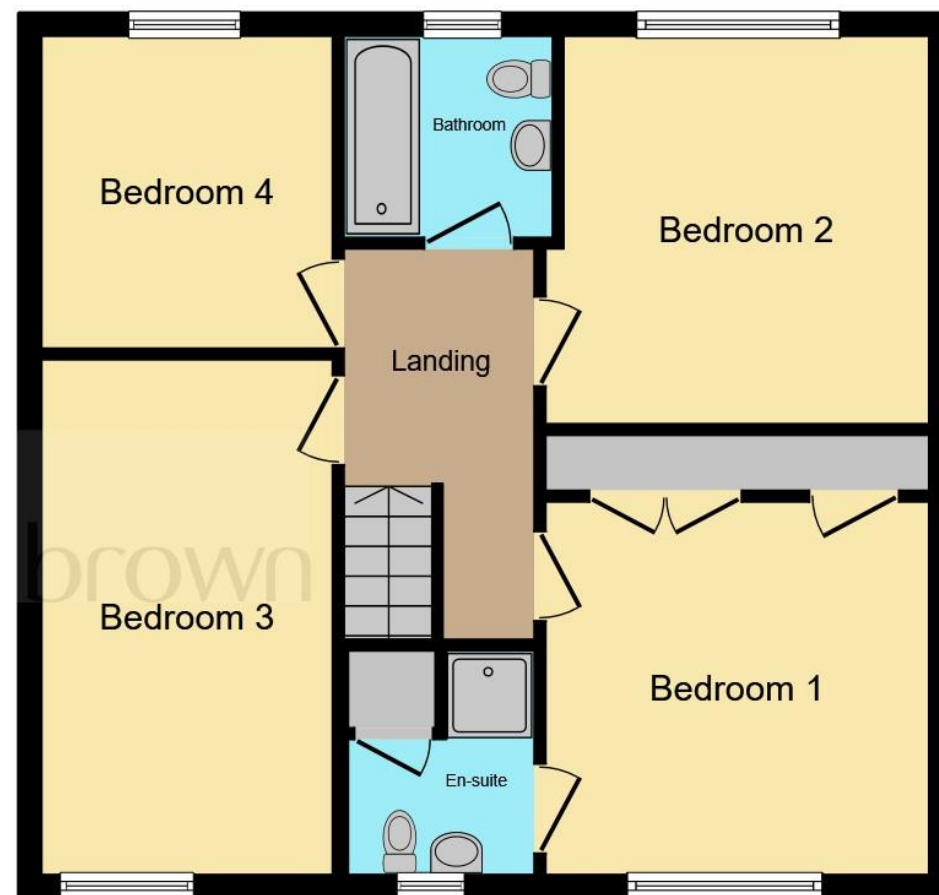


view this property online williamhbrown.co.uk/Property/NWK105572





Ground Floor



First Floor

welcome to

Moore Close, Claypole Newark

- DETACHED FAMILY HOME
- FOUR BEDROOMS
- LIVING ROOM
- MODERN KITCHEN WITH BUILT IN APPLIANCES
- MASTER BEDROOM WITH EN-SUITE

Tenure: Freehold

EPC Rating: D

offers in excess of

£350,000



Please note the marker reflects the postcode not the actual property

view this property online [williamhbrown.co.uk/Property/NWK105572](https://www.williamhbrown.co.uk/Property/NWK105572)



Property Ref:
NWK105572 - 0005

1. MONEY LAUNDERING REGULATIONS Intending purchasers will be asked to produce identification documentation at a later stage and we would ask for your co-operation in order that there is no delay in agreeing the sale. 2. These particulars do not constitute part or all of an offer or contract. 3. The measurements indicated are supplied for guidance only and as such must be considered incorrect. Potential buyers are advised to recheck measurements before committing to any expense. 4. We have not tested any apparatus, equipment, fixtures or services and it is in the buyers interest to check the working condition of any appliances. 5. Where an EPC, or a Home Report (Scotland only) is held for this property, it is available for inspection at the branch by appointment. If you require a printed version of a Home Report, you will need to pay a reasonable production charge reflecting printing and other costs. 6. We are not able to offer an opinion either written or verbal on the content of these reports and this must be obtained from your legal representative. 7. Whilst we take care in preparing these reports, a buyer should ensure that his/her legal representative confirms as soon as possible all matters relating to title including the extent and boundaries of the property and other important matters before exchange of contracts.

William H Brown is a trading name of Sequence (UK) Limited which is registered in England and Wales under company number 4268443, Registered Office is Cumbria House, 16-20 Hockliffe Street, Leighton Buzzard, Bedfordshire, LU7 1GN. VAT Registration Number is 500 2481 05.



william h brown



01636 640473



newark@williamhbrown.co.uk



47-48 Market Place, NEWARK,
Nottinghamshire, NG24 1EG



[williamhbrown.co.uk](https://www.williamhbrown.co.uk)