

The Esme

2 Bedroom Detached Bungalow



THE VALLEY
MANSFIELD



Welcome to The Esme,
a high specification two
bedroom detached bungalow

- 892 sqft
- Garage - attached
- Contemporary kitchen with fitted appliances
- Modern bathroom with porcelain floor and wall tiles
- Spacious kitchen, living, dining area with patio doors to the rear

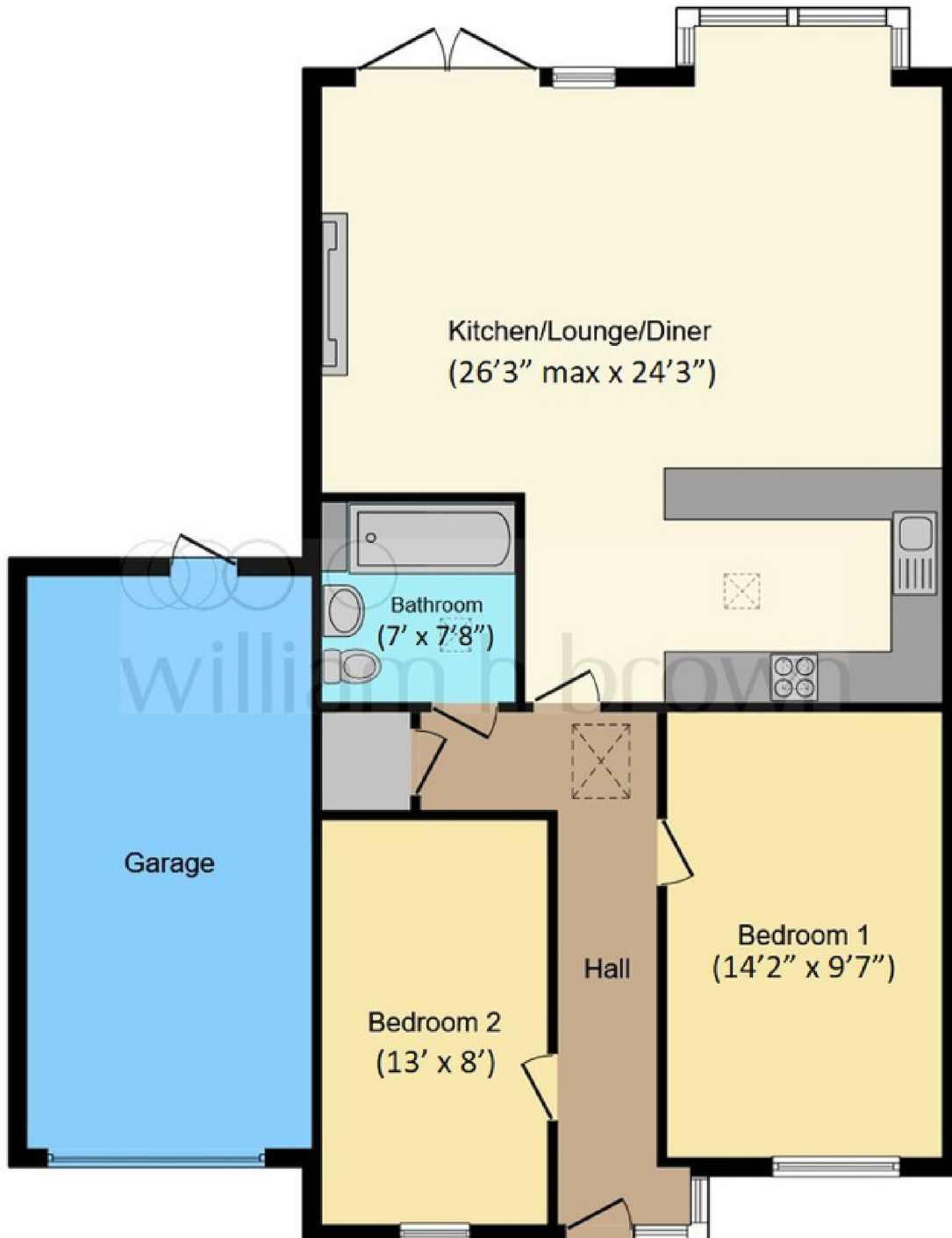


The Esme

2 Bedroom Detached Bungalow



THE VALLEY
MANSFIELD



To find out more about our 1, 2 and 3 bedroom homes at The Valley, Mansfield call our sales team on **07594 509472** or email us at thevalley@williambrown.co.uk

Plans, measurements and specifications are correct at time of printing. All plans are not to scale and measurements are taken off plan for illustration purposes only, any prospective purchasers are advised to check the measurements before committing to any expenses. Some images used are computer generated and/or photographs of previous developments built by Walker Homes, they are used for marketing purposes only and are subject to change. All information in this brochure should be used as a guide and do not form any part of a contract. The Developer reserves the right to make changes as and when required throughout the build. MONEY LAUNDERING REGULATIONS Intending purchasers will be asked to produce identification documents at a later stage and we would ask for your co-operation in order to avoid delays in agreeing a sale.

