

Bridgeford

Overview

From the lounge and adjoining dining room to the delightful conservatory-style breakfast space, from the study to the two en-suite bedrooms, one with a luxurious dressing area, this is a residence of immense quality.

Ground Floor

Lounge
3.56m x 5.31m
11'8" x 17'5"

Dining
3.56m x 2.66m
11'8" x 8'9"

Kitchen
3.96m x 3.71m
13'0" x 12'2"

Laundry
2.33m x 1.68m
7'8" x 5'6"

Family/Breakfast
2.71m x 5.62m
8'11" x 18'6"

Study
3.52m x 2.42m
11'7" x 7'11"

WC
1.09m x 1.68m
3'7" x 5'6"

First Floor

Principal Bedroom
3.64m x 4.04m
11'11" x 13'3"

Dressing
2.44m x 2.25m
8'0" x 7'5"

En-Suite 1
2.44m x 1.38m
8'0" x 4'7"

Bedroom 2
3.52m x 2.68m
11'7" x 8'10"

En-Suite 2
1.21m x 2.68m
4'0" x 8'10"

Bedroom 3
3.59m x 3.10m
11'9" x 10'2"

Bedroom 4
2.97m x 3.19m
9'9" x 10'6"

Bedroom 5
2.69m x 2.68m
8'10" x 8'10"

Bathroom
2.56m x 2.09m
8'5" x 6'11"

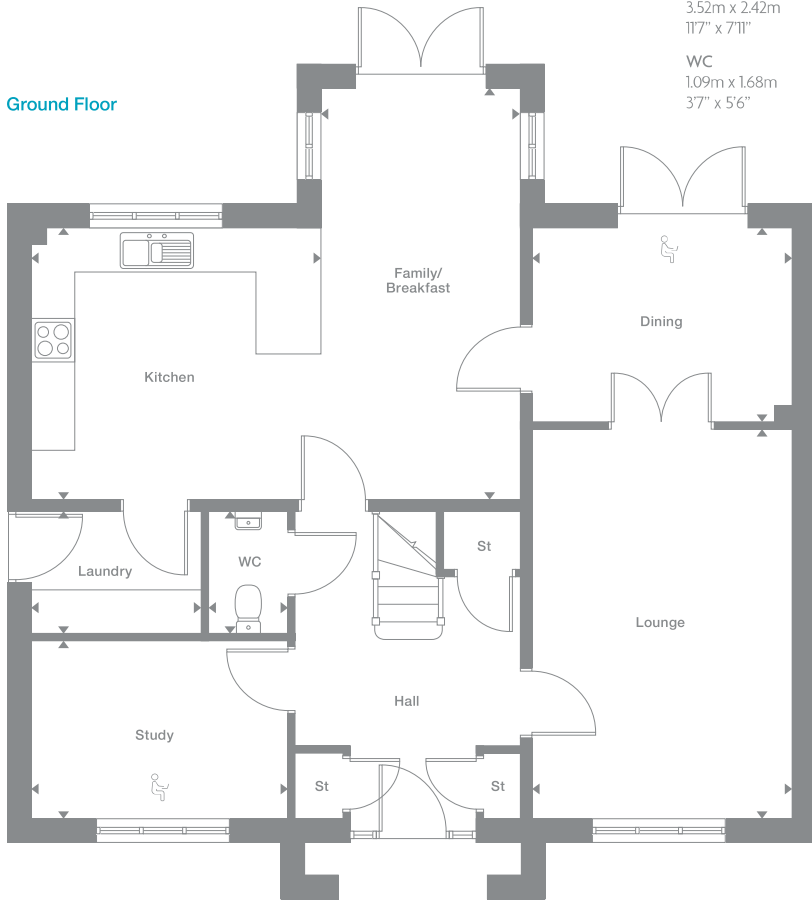
Floor Space

1,885 sq ft

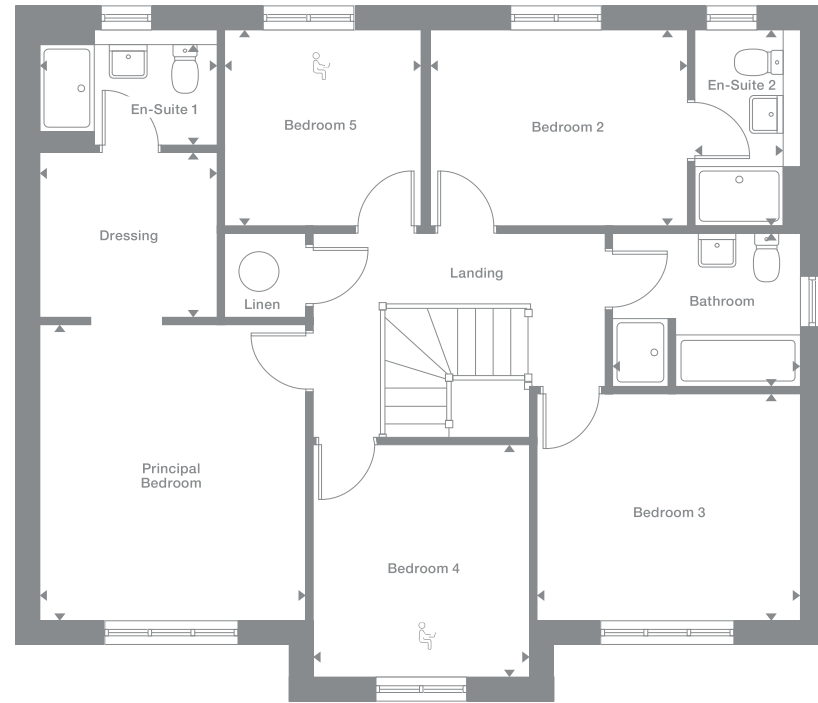
Plots may be a mirror image of the floor plans. Please see Development Sales Manager for details



Ground Floor



First Floor



Office space area

Photography represents typical Miller Homes' interiors and exteriors. All plans in this brochure are not drawn to scale and are for illustrative purposes only. Consequently, they do not form part of any contract. Room layouts are provisional and may be subject to alteration. Please refer to the 'Important Notice' section at the back of this brochure for more information.