



Connells

Tudor Manor Gardens
Watford



Property Description

A prestigious four bedroom detached family home located in this popular leafy area which is well placed for sought after Parmiters and St Michael's schools. This well-maintained home has everything a growing family could need, extra storage in the former-garage, a large lounge and dining room, downstairs study and cloakroom and a modern fitted kitchen. To the first floor there are four bedrooms, the master with ensuite, and a family bathroom. A large rear garden with patio area is perfect for enjoying in the warmer months. Well placed for the North Orbital Road and the M1, also with local bus routes, this property is highly recommended for viewing.

Entrance Hall

Front door.

Study

7' 9" x 7' 4" (2.36m x 2.24m)

Built in storage, window.

Cloakroom

Window, WC.

Lounge

19' 7" x 13' 5" (5.97m x 4.09m)

Doors to rear garden.

Kitchen

21' 6" x 7' 5" (6.55m x 2.26m)

Windows to side & front, cooker point, sink with drainer, sink with drainer.



Dining Room

13' 8" x 18' 7" (4.17m x 5.66m)

Two doors to garden, skylight/ lantern.

Storage

7' 10" x 8' 4" (2.39m x 2.54m)

First Floor

Bedroom 1

11' 2" x 9' 11" (3.40m x 3.02m)

Windows, storage.

Ensuite

WC, shower cubicle, wash hand basin,

Bedroom 2

10' 1" x 10' 11" (3.07m x 3.33m)

Window.

Bedroom 3

8' 9" x 8' (2.67m x 2.44m)

Window.

Bedroom 4

6' 3" x 9' 1" (1.91m x 2.77m)

Window.

Bathroom

Bath, WC, wash hand basin,

Outside

Front Garden

Off road parking.

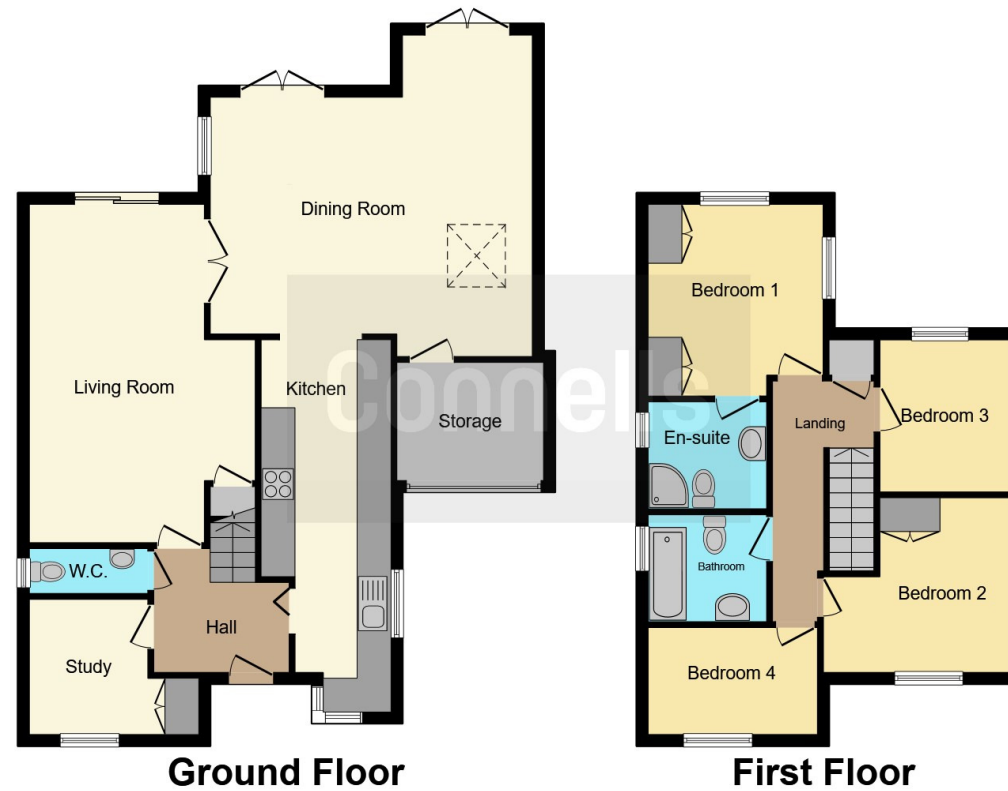
Rear Garden

Patio, lawn.









This floor plan is for illustrative purposes only. It is not drawn to scale. Any measurements, floor areas (including any total floor area), openings and orientation are approximate. No details are guaranteed, they cannot be relied upon for any purpose and they do not form part of any agreement. No liability is taken for any error, omission or misstatement. A party must rely upon its own inspection(s). Powered by www.focalagent.com

To view this property please contact Connells on

T 01923 674504
E leavesden@connells.co.uk

1 Cunningham Way Leavesden
 Abbots Langley WD25 7NG

EPC Rating: C

Tenure: Freehold

view this property online connells.co.uk/Property/LEA102992



1. MONEY LAUNDERING REGULATIONS Intending purchasers will be asked to produce identification documentation at a later stage and we would ask for your co-operation in order that there will be no delay in agreeing the sale. 2. These particulars do not constitute part or all of an offer or contract. 3. The measurements indicated are supplied for guidance only and as such must be considered incorrect. Potential buyers are advised to recheck measurements before committing to any expense. 4. We have not tested any apparatus, equipment, fixtures, fittings or services and it is in the buyers interest to check the working condition of any appliances.

Connells Residential is registered in England and Wales under company number 1489613, Registered Office is Cumbria House, 16-20 Hockliffe Street, Leighton Buzzard, Bedfordshire, LU7 1GN. VAT Registration Number is 500 2481 05.

See all our properties at www.connells.co.uk | www.rightmove.co.uk | www.zoopla.co.uk

Property Ref: LEA102992 - 0006