



Lawnswood Drive, Swinton

Manchester



In Excess of £325,000

25 Lawnswood Drive

Swinton, Manchester

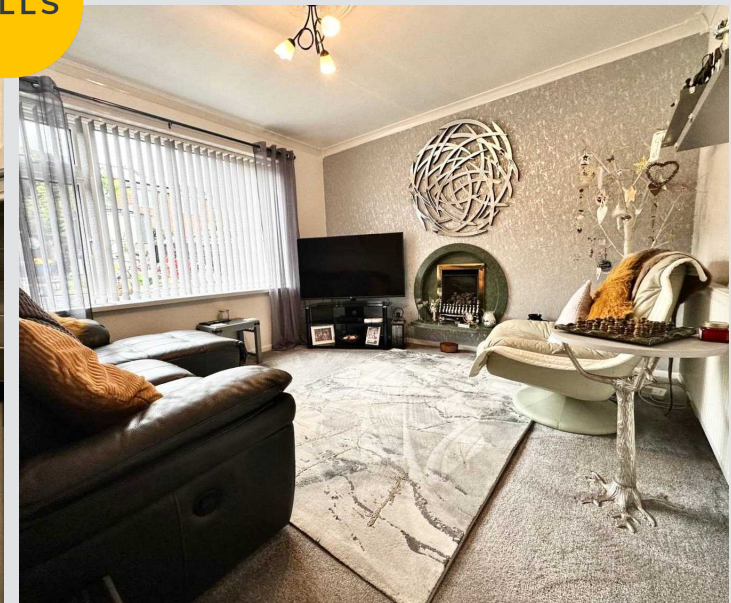
A VERY WELL PRESENTED DETACHED HOUSE. On the ground floor the property offers an entrance hall, a good size lounge, a kitchen and dining room, and a bedroom. On the first floor there are two further bedrooms and a family bathroom. The house has gas central heating and

Tenure: Leasehold

- WELL PRESENTED DETACHED HOUSE
- THREE BEDROOMS
- FITTED KITCHEN AND DINING ROOM
- GOOD SIZE LOUNGE
- GAS CENTRAL HEATING AND UPVC DOUBLE GLAZING
- WELL MAINTAINED FRONT AND REAR GARDENS
- DRIVEWAY AND GARAGE
- QUIET LOCATION
- CONVENIENTLY LOCATED FOR LOCAL TRANSPORT LINKS SCHOOLS AND SHOPS



HILLS



Lounge

12' 2" x 7' 10" (3.70m x 2.40m)

Lounge 12' 1" x 7' 10" (3.68m x 2.39m) UPVC double glazed window to the front, wall-mounted radiator and carpeted floors, as well as TV points, ceiling light point and power points.

Kitchen and Dining Room

15' 5" x 7' 10" (4.70m x 2.40m)

Fitted with a modern white range of high gloss wall and base units, with complimentary roll top work surface. Integrated stainless steel sink, 5 ring gas range cooker with extractor over, as well as integrated fridge/freezer and washer. Wall-mounted double radiator, UPVC door to the side and two UPVC double glazed windows to the side and rear. Vinyl tiled floors, tiled splash backs, power points and inset ceiling light spots.

Ground Floor Bedroom

11' 10" x 11' 10" (3.60m x 3.60m)

Bedroom One

11' 10" x 11' 6" (3.60m x 3.50m)

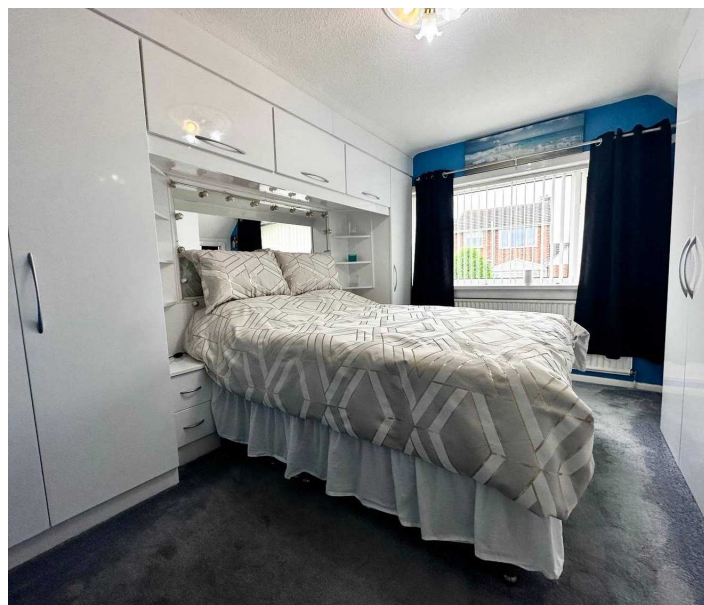
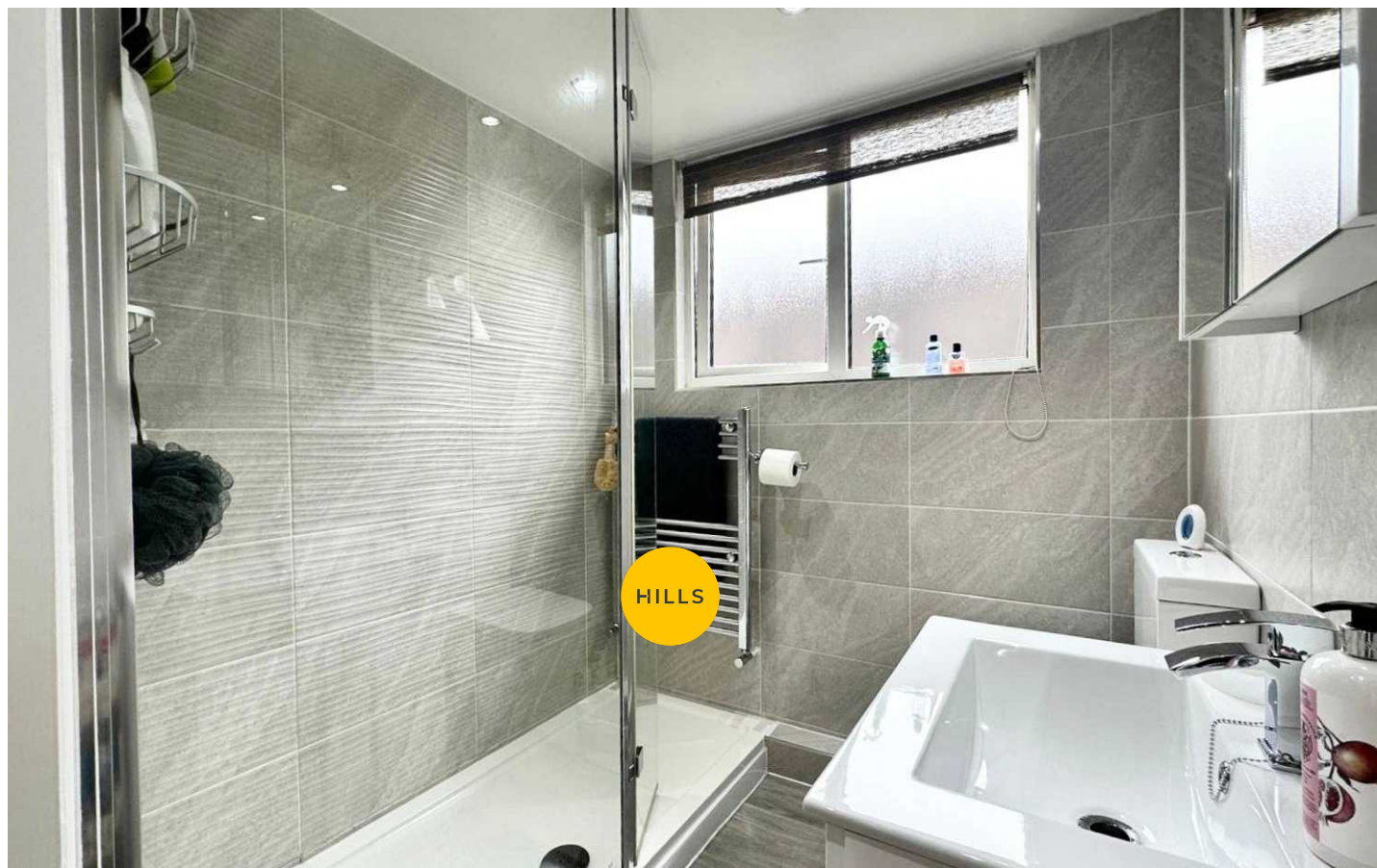
Bedroom Two

13' 9" x 9' 6" (4.20m x 2.90m)

Bathroom

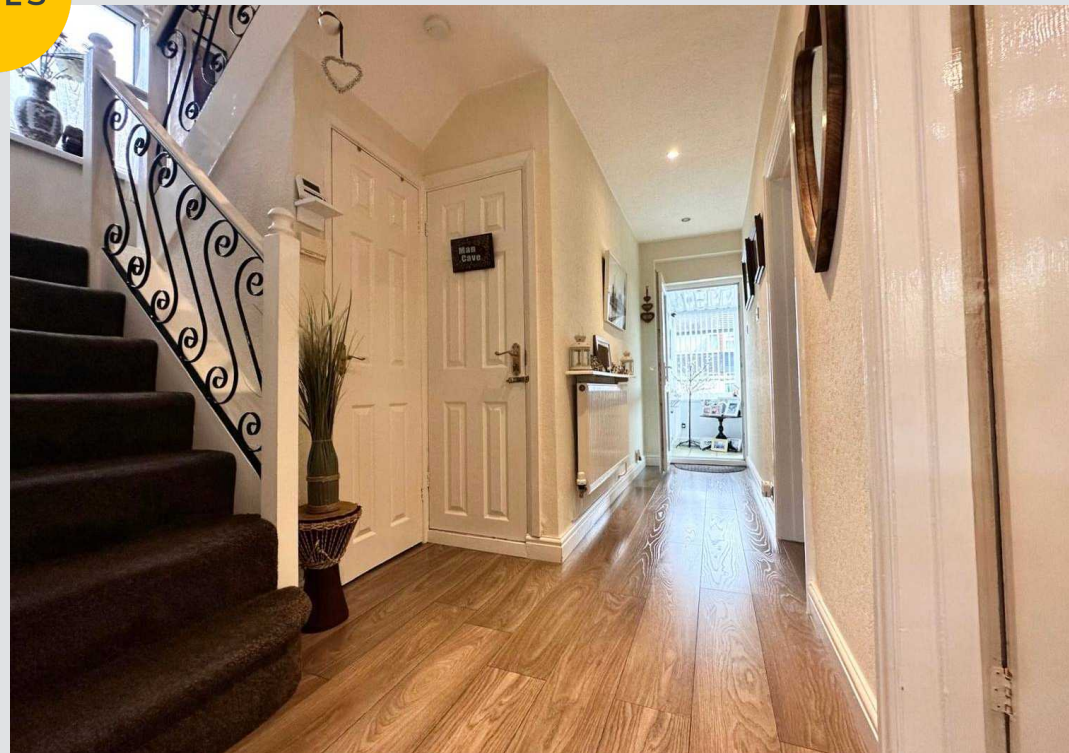
7' 10" x 6' 3" (2.40m x 1.90m)

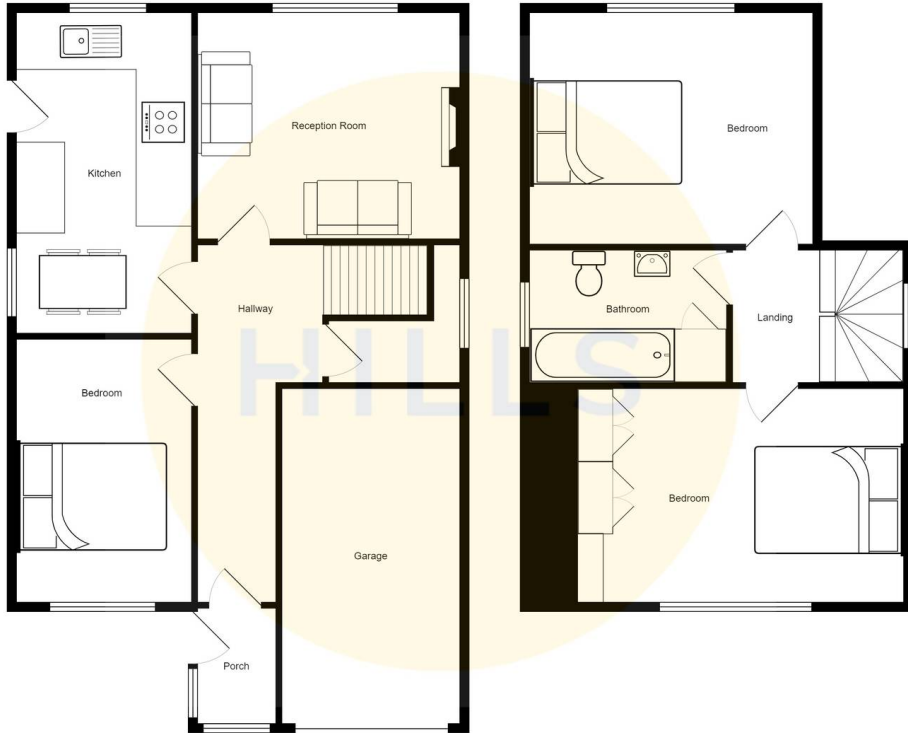
Fitted with a three piece white modern suite, comprising of low level W.C., pedestal hand wash basin and bath with thermostatic shower over. Storage cupboard, UPVC double glazed window to the side and wall-mounted radiator. Tiled floors, part tiled walls and inset ceiling light spots.





HILLS







Hills Swinton | Salfords Estate Agent

4 Pendlebury Road, Swinton - M27 4AR

0161 794 2888

swinton@hills.agency

www.hills.agency/



THE PROPERTY MISDESCRIPTIONS ACT 1991 The Agent has not tested any apparatus, equipment, fixtures and fittings or services and so cannot verify that they are in working order or fit for the purpose. A Buyer is advised to obtain verification from their Solicitor or Surveyor. References to the Tenure of a Property are based on information supplied by the Seller. The Agent has not had sight of the title documents. A Buyer is advised to obtain verification from their Solicitor. You are advised to check the availability of this property before travelling any distance to view. Every effort and precaution has been made to ensure these particulars are correct and not misleading but their accuracy is not guaranteed nor do they form part of any contract. If there is any point which is of particular importance to you, please contact us and we will provide any information you require. This is advisable, particularly if you intend to travel some distance to view the property. The mention of any appliances and services within these details does not imply that they are in full and efficient working order. These particulars are in draft form awaiting Vendors confirmation of their accuracy. These details must therefore be taken as a guide only.