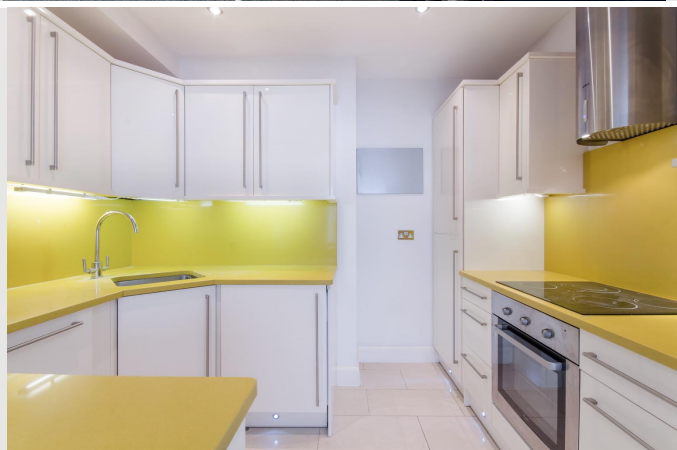


Hallam Court

Guide Price £900,000

Sales



Greater London Properties Presents...

- Stylish Two Bedroom Two Bathroom Apartment
- Sought After Mansion Block With Porter And Lift
- Well Proportioned Rooms With Lots Of Natural Light
- Conveniently Located For Great Portland Street And Goodge Street
- Heating And Hot Water Included In Service Charge
- Marylebone



CALL NOW 0207 113 1066

www.glp.co.uk

@greaterlondonproperties

Twitter Facebook LinkedIn Instagram



VIEW ONLINE

glp
greaterlondonproperties.co.uk