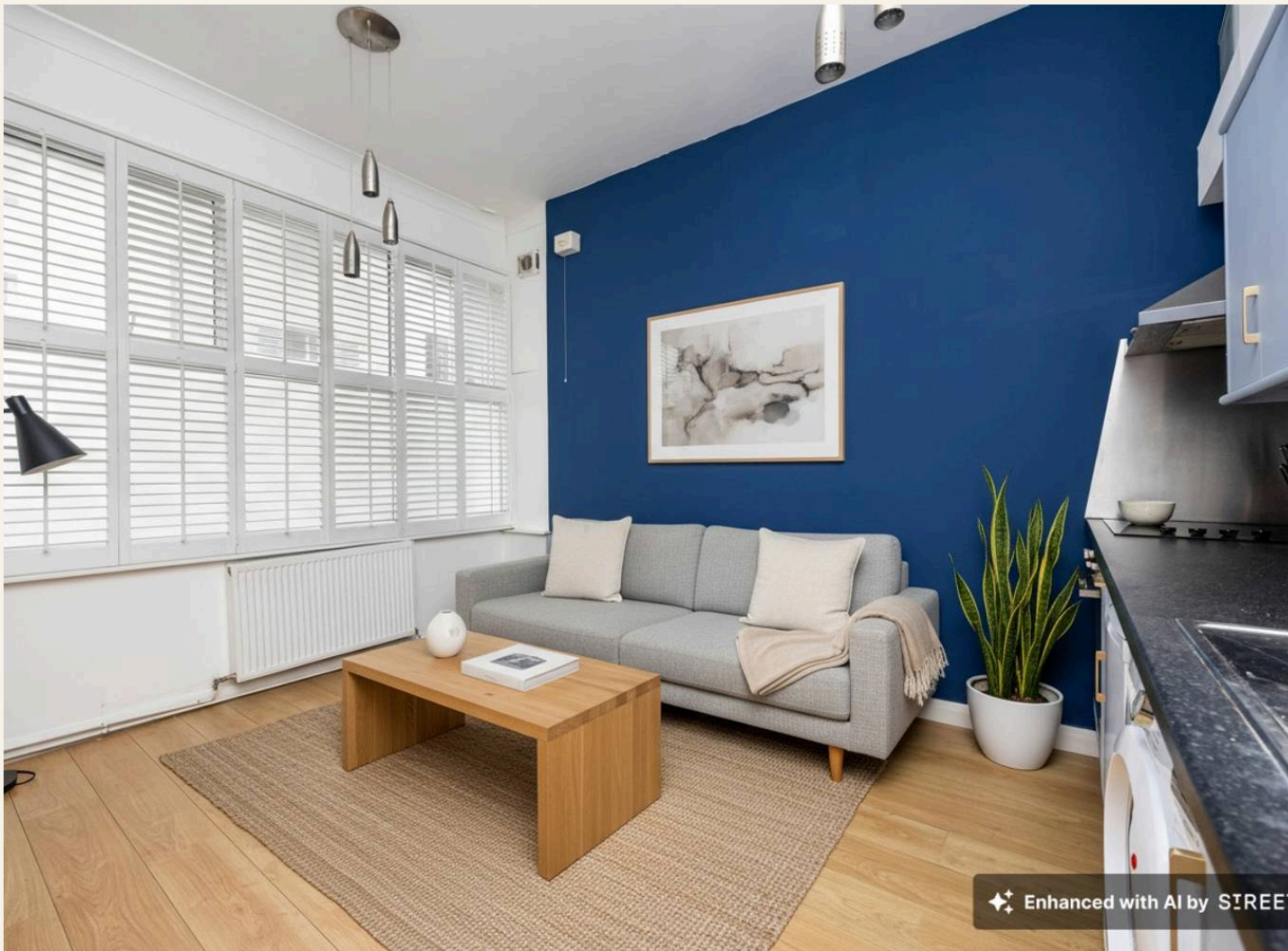




HW

ESTATE AGENTS

Sillwood Street, Brighton
£325,000



46 Sillwood Street

Brighton, Brighton

Stylish one-bedroom semi-detached with period features, open plan living, modern kitchen, en-suite, and central location near shops, cafés, parks, and transport.

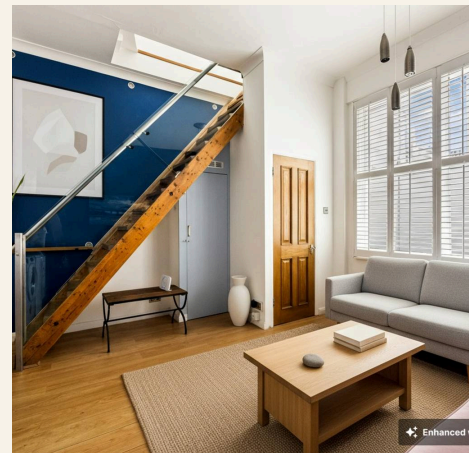
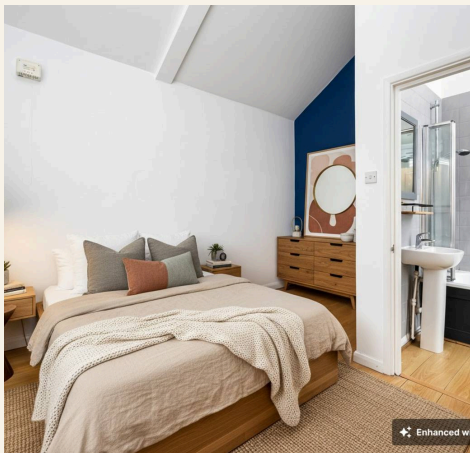
Council Tax band: C

Tenure: Freehold

EPC Energy Efficiency Rating: D

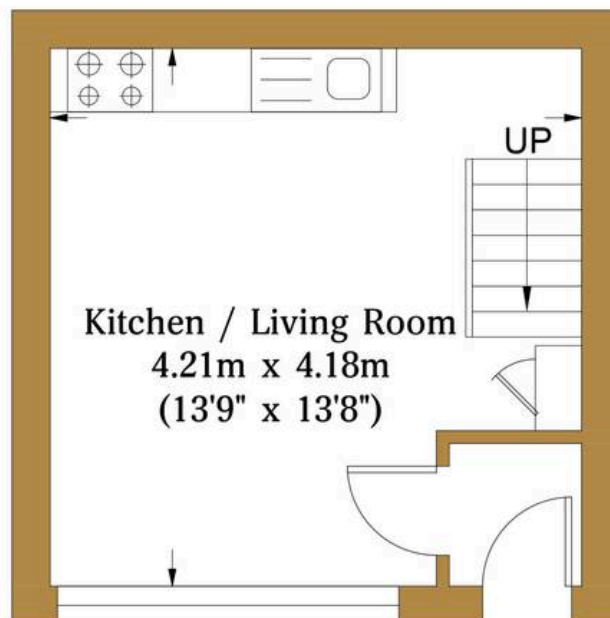
EPC Environmental Impact Rating: D

- modern kitchen with integrated appliances
- open plan living area
- contemporary wooden staircase with glass balustrade
- large windows with shutters
- high ceilings
- wooden flooring throughout
- modern bathroom with bath and integrated shower
- en-suite bathroom
- central location

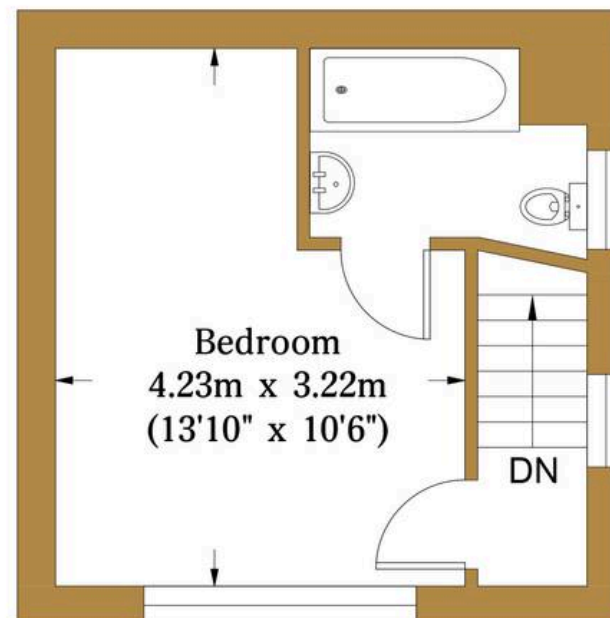


Silwood Street

Approx. Gross Internal Area:- 35.36 sq.m. 380.6 sq.ft.



Ground Floor
Approximate Floor Area
190.30 sq ft
(17.68 sq m)



First Floor
Approximate Floor Area
190.30 sq ft
(17.68 sq m)



Illustration for identification purposes only, measurements are approximate, not to scale.

© hwestateagents



HW Estate Agents

HW Estate Agents, 80 Goldstone Villas, Hove - BN3 3RU

01273 359000 · hove@hwestateagents.co.uk · www.hwestateagents.co.uk

HW

ESTATE AGENTS