



HW

ESTATE AGENTS

Flat 3, 108 Church Road, Hove
£240,000



Flat 3

108 Church Road, Hove

Charming 2-bed flat in central location, blending period features with modern style. Spacious kitchen-living area, bright bedrooms with storage, stylish bathroom. Period building with excellent amenities and transport links. Ideal for professionals or small families seeking urban living (200 characters).

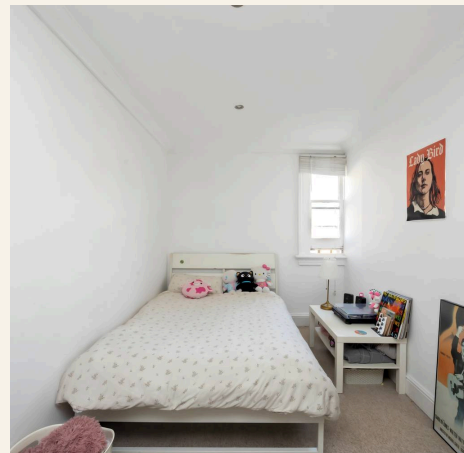
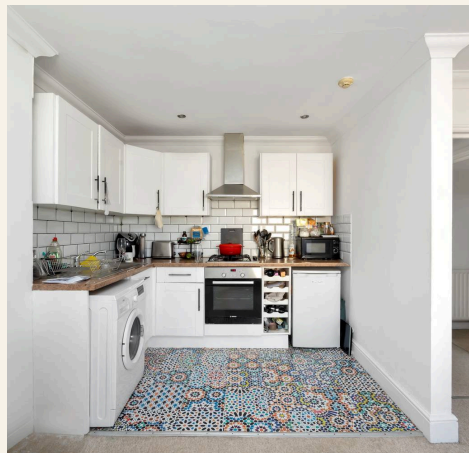
Council Tax band: A

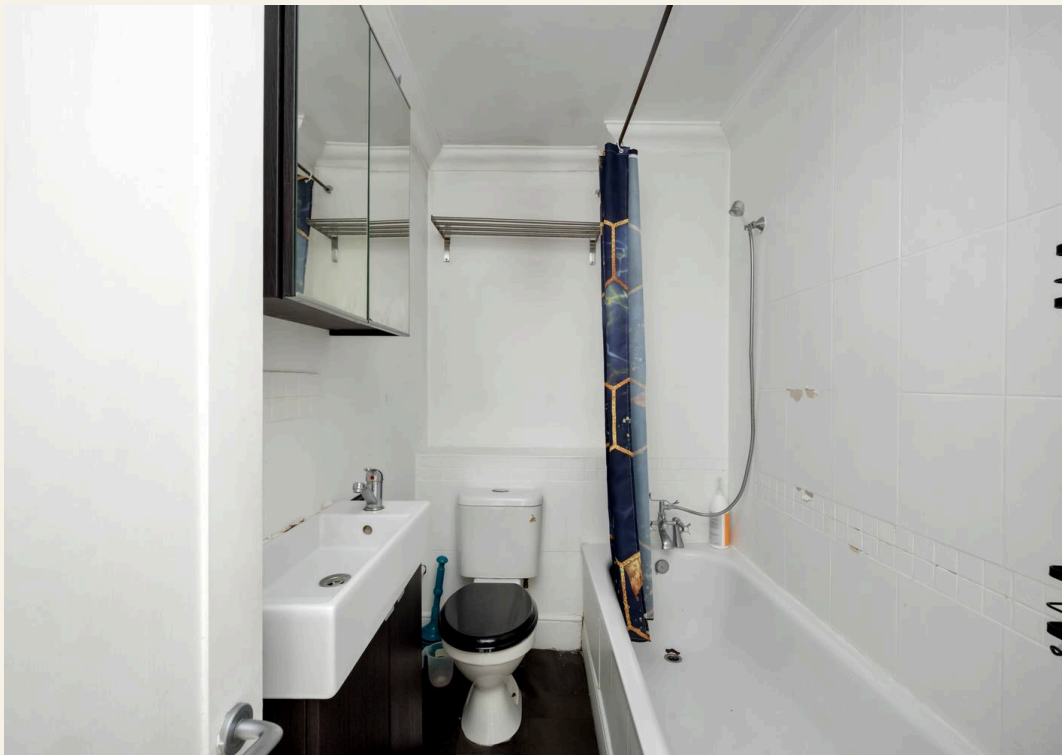
Tenure: Leasehold

EPC Energy Efficiency Rating: C

EPC Environmental Impact Rating: C

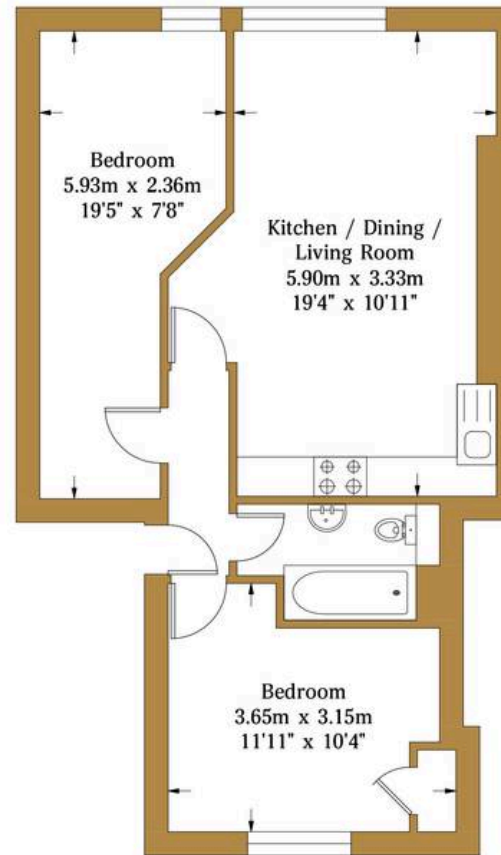
- Open plan kitchen living area
- Modern kitchen units
- Integrated oven
- Decorative fireplace
- Ample natural light
- Built-in storage
- Modern bathroom with full-size bath-tub
- Period features
- Central location
- Intercom system





Church Road

Approx. Gross Internal Area :- 49.0 sq.m. 527.43 sq.ft.



Third Floor Flat
Approximate Floor Area
527.43 sq ft
(49.0 sq m)

Illustration for identification purposed only, measurements are approximate, not to scale.

© hwestateagents



HW Estate Agents

HW Estate Agents, 80 Goldstone Villas, Hove - BN3 3RU

01273 359000 · hove@hwestateagents.co.uk · www.hwestateagents.co.uk

HW

ESTATE AGENTS