

Thame

2 Hopton Road | Thame | Oxon | OX9 3TS



Price £365,000

ACCOMMODATION

A three bedroom end of terrace home
Overlooking green to front
Entrance hallway with staircase
Open plan dining room / sitting room
Patio doors opening to the garden
Kitchen with fitted units & door to garden
Main bedroom with further double room
Single bedroom and shower room
Rear garden with gated side access
Detached garden to rear and driveway



This three bedroom end of terrace property has great potential to refurbish and extend to suit one's needs. It is ideally situated at the end of a quiet cul de sac and overlooking a well maintained green with footpaths to Thame High Street and Barley Hill Primary School. The hallway has a staircase leading to the first floor and door opening into the spacious sitting / dining room which has patio doors opening into the rear garden.



The kitchen has a range of base and wall units with built in oven and gas hob and a door opening to the garden. On the first floor the main bedroom overlooks the front green with a further double bedroom having a range of built in wardrobes and a single bedroom to the rear. The bathroom has been converted with a spacious walk in shower and white suite. Externally the garden has been designed for easy maintenance and is fully enclosed with gated side access and a detached single garage to the rear with drive way parking for one car. NO ONWARD CHAIN.

KEY FEATURES

- End of terrace 3 bedroom house with great potential to refurbish
- Situated at the end of a cul de sac & overlooking a well maintained green
- Within walking distance of Thame High Street and Barley Hill School
- Good sized rear garden with detached garage and driveway at the rear
- Ideal first time purchase with potential to create a lovely family
- OFFER FOR SALE WITH NO ONWARD CHAIN
- Please call Colombs on 01844 214421 to arrange a suitable time to view



THAME

Thame is a bustling traditional Market town located close to the Chiltern Hills and the historic City of Oxford. Within Thame there are many lovely restaurants, public houses and coffee shops. Thame has a thriving well supported market each Tuesday with a farmers' market once a month. The traditional cattle market takes place within Thame each week. There is a small theatre within Thame called The Thame Players and there are numerous clubs and societies. Thame is nicely positioned for the commuter with Haddenham station being a five minute drive from Thame and provides a direct route to London Marylebone in some 36 minutes whilst the M40 motorway is a short drive from Thame

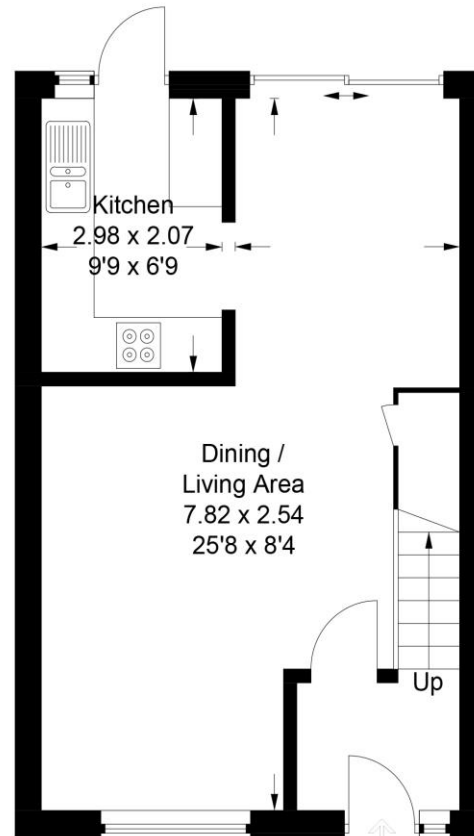
Local Authority – South Oxfordshire District Council

Council Tax -C

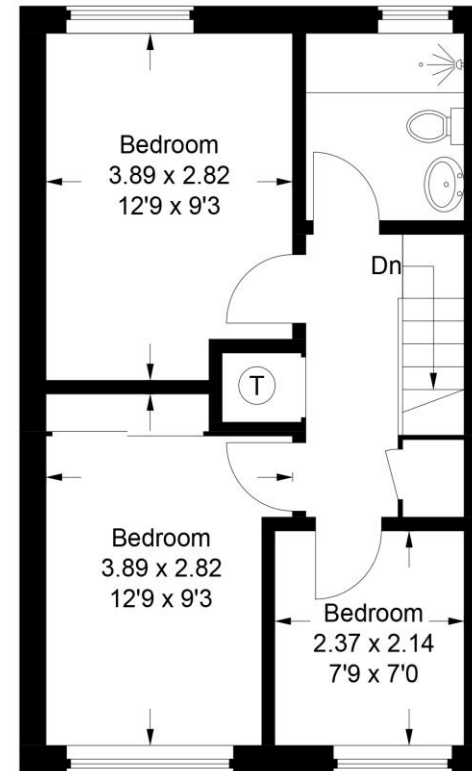
EPC – C

2 Hopton Road

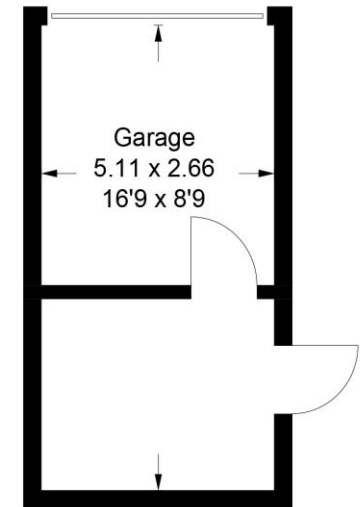
Approximate Gross Internal Area
Ground Floor = 37.6 sq m / 405 sq ft
First Floor = 37.0 sq m / 398 sq ft
Garage = 13.5 sq m / 145 sq ft
Total = 88.1 sq m / 948 sq ft



Ground Floor



First Floor



(Not Shown In Actual Location / Orientation)

This plan is for layout guidance only. Not drawn to scale unless stated. Windows and door openings are approximate. Whilst every care is taken in the preparation of this plan, please check all dimensions, shapes and compass bearings before making any decisions reliant upon them.

© CJ Property Marketing Ltd Produced for Colombbs



1 Swan Walk, Upper High Street, Thame, Oxon, OX9 3HN

01844 214421

thame@colombs.co.uk

www.colombs.co.uk

IMPORTANT: we would like to inform prospective purchasers that these sales particulars have been prepared as a general guide only. A detailed survey has not been carried out, nor the services, appliances and fittings tested. Room sizes should not be relied upon for furnishing purposes and are approximate. If floor plans are included, they are for guidance only and illustration purposes only and may not be to scale. If there are any important matters likely to affect your decision to buy, please contact us before viewing the property.