

Thame

61 Sharman Beer Court | Thame | Oxon | OX9 2DD



Price £160,000

ACCOMMODATION

A one bedroom retirement apartment
Situated in an exclusive development
The property is located in the main block
Accessed by either the lift or staircase
Entrance hall with door to shower room
Open plan sitting / dining area & kitchen
Sitting room with window seat and views
Kitchen with range of units & appliances
Bedroom with built in wardrobes & velux
Wardened accommodation for over 60's



Sharman Beer Court is situated in the heart of Thame and is close to the High Street and local amenities. This exclusive development offers wardened accommodation for over 60's living with communal sitting room and laundry room. The property is set on the 2nd floor which is accessible by either lift or staircase.



This one bedroom apartment has an entrance hallway with door to shower room which benefits from a double shower cubicle and white suite. The sitting room has a lovely picture window with views over the to the park as well as providing a dining area and kitchenette area with range of wall & base units and appliances. There is a cupboard housing a new water tank. The bedroom has a range of wardrobes & velux window allowing ample light.

KEY FEATURES

- Situated close to Thame High Street and local amenities for over 60's
- Well maintained throughout with delightful communal gardens & seating
- Car parking for both residents and visitors
- An active community offering a varied range of activities for residents
- 962 years remaining on the lease.
- Maintenance Charges of £220.00 per month (£2,640 per annum)
- Please call Colombs to arrange a suitable time to view on 01844 214421



THAME

Thame is a lovely historical old traditional market town with a bustling High Street and including a selection of popular independent retail shops, coffee shops and public houses. Thame has a good range of supermarkets as well as a thriving market every Tuesday. There are ample local amenities such as opticians, dentists and doctors surgery and also benefits from a regular bus service running to both Oxford and Aylesbury which both have larger and more complex town centres and theatres.

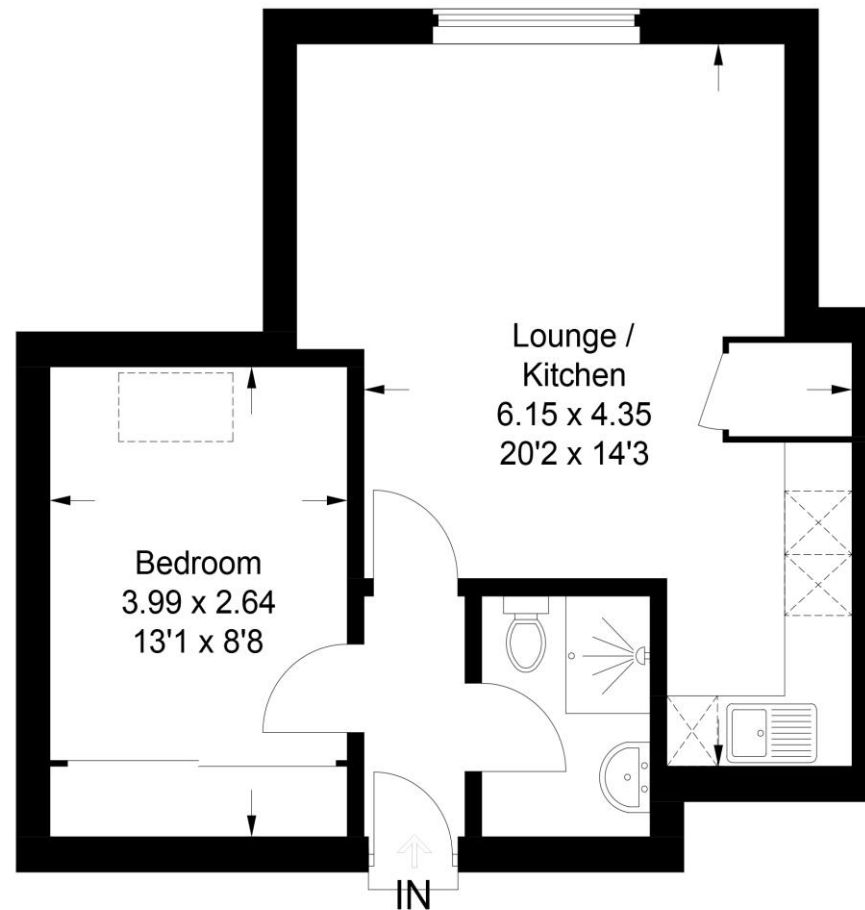
Local Authority – South Oxfordshire District Council

Council Tax - B

EPC - C

61 Sharman Beer Court

Approximate Gross Internal Area = 41.2 sq m / 443.8 sq ft



This plan is for layout guidance only. Not drawn to scale unless stated. Windows and door openings are approximate. Whilst every care is taken in the preparation of this plan, please check all dimensions, shapes and compass bearings before making any decisions reliant upon them.

© CJ Property Marketing Ltd Produced for For Colombs


Colombs

1 Swan Walk, Upper High Street, Thame, Oxon, OX9 3HN

01844 214421

thame@colombs.co.uk

www.colombs.co.uk

IMPORTANT: we would like to inform prospective purchasers that these sales particulars have been prepared as a general guide only. A detailed survey has not been carried out, nor the services, appliances and fittings tested. Room sizes should not be relied upon for furnishing purposes and are approximate. If floor plans are included, they are for guidance only and illustration purposes only and may not be to scale. If there are any important matters likely to affect your decision to buy, please contact us before viewing the property.