

Buchanan House

Apartment 1 | Malthouse Square | Princes Risborough | Bucks
HP27 9AQ



Prices from £300,000

ACCOMMODATION

Communal Entrance Hall with security
Entrance phone system
Contemporary open plan living room /
Dining/Kitchen with integrated appliances
Inner hallway with storage cupboard
Main double bedroom with built in range
of wardrobes
Contemporary shower room with walk in
shower
Private parking space.



Buchanan House is a luxury development of individual apartments set in the heart of the popular vibrant market town of Princes Risborough that has skillfully been converted to create four bespoke apartments with a modern and contemporary feel throughout producing stylish homes where no attention to detail has been spared .



The kitchens have been professionally designed with a range of integrated appliances and a great working area. The living rooms provide good living space with ample space for both relaxing in and dining thus creating good entertaining areas.

The apartments all benefit from having a parking space which is rare for properties in the heart of the town.

For lease details and services charges please speak to the agent.

KEY FEATURES

- Fitted kitchens from the Sheraton range by Grant & Stone .
- Integrated appliances in the kitchen by Bosch and a Caple cooker hood
- Electric radiator heating smart controlled.
- Range of built in wardrobes providing excellent storage.
- Private parking for one vehicle.
- Moments from the bustling High Street with its array of shops and restaurants.
- Within walking distance of the railway station with access to London



Location

Princes Risborough lies at the foot of the Chiltern Hills which are a delightful backdrop to the market town. The area is great for walking, cycling and riding with the Ridgeway and the Icknield Way giving great opportunities to explore the countryside.

The town is ideally placed for travel within the local area and into London with trains into London Marylebone taking under an hour. Ideal for the commuter.

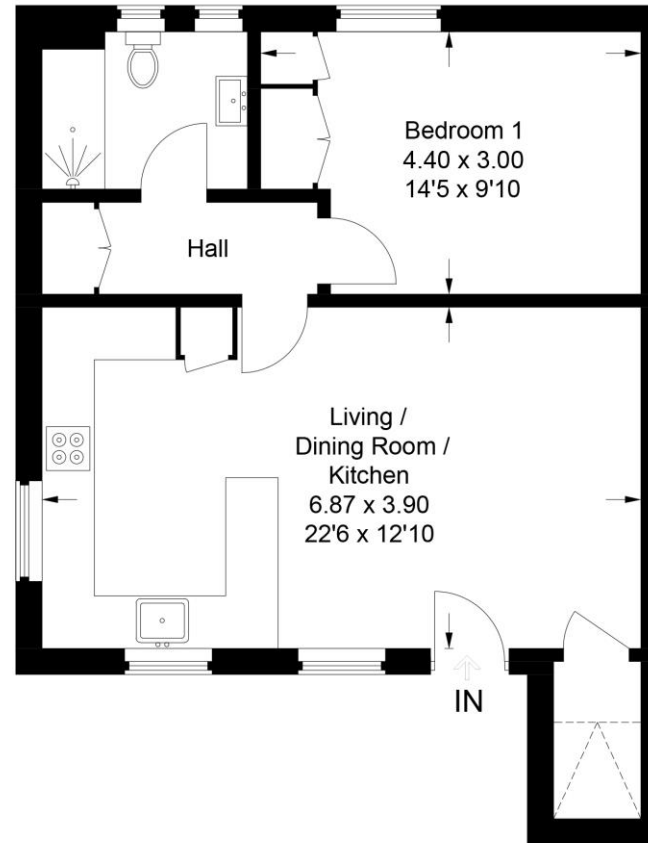
The town caters for all day to day needs with an M & S and Tesco's as well as independent shops, a leisure and fitness centre and excellent schooling for all ages.

Local Authority – Wycombe District Council

Council Tax - T B C

EPC - C

Approximate Gross Internal Area = 50.4 sq m / 542 sq ft



This plan is for layout guidance only. Not drawn to scale unless stated. Windows and door openings are approximate. Whilst every care is taken in the preparation of this plan, please check all dimensions, shapes and compass bearings before making any decisions reliant upon them.

© CJ Property Marketing Ltd Produced for Colomb's

1 Swan Walk, Upper High Street, Thame, Oxon, OX9 3HN

01844 214421

thame@colombs.co.uk

www.colombs.co.uk

IMPORTANT: we would like to inform prospective purchasers that these sales particulars have been prepared as a general guide only. A detailed survey has not been carried out, nor the services, appliances and fittings tested. Room sizes should not be relied upon for furnishing purposes and are approximate. If floor plans are included, they are for guidance only and illustration purposes only and may not be to scale. If there are any important matters likely to affect your decision to buy, please contact us before viewing the property.