

Property ref: 177669



Gosling Court, Reading, RG2 9WW

£1,700 PCM



Two-bedroom second-floor apartment located in Arborfield Green. The property features an open-plan kitchen and living area with access to a private balcony overlooking the front of the building. The modern kitchen benefits from integrated appliances and ample storage. There are two double bedrooms, with the main bedroom offering an en-suite shower room. A separate family bathroom includes a bath. The property has electric heating and there is also allocated parking for one car. EPC Rating C. Wokingham council tax band C.

- Second floor two bedroom part furnished apartment
- Modern open plan kitchen/living room
- Balcony
- Ensuite in the main bedroom
- Allocated parking
- EPC Rating C

Available 02/03/2026

*Fees For Assured Shorthold Tenancies: when you rent a property from us you will be required to pay a sum equivalent to one weeks' rent for a holding deposit. Upon successful application, this amount will be off set against your first months' rent. You will also be required to pay a security deposit equivalent to 5 weeks' rent which will be held and protected in line with Deposit legislation. For more information about our fees please visit: www.michael-hardy.co.uk
Fees for all other tenancies (Non Housing Act Tenancies / Company Lets): when you rent a property from us we will charge you a one-off fee per property. This charge is the equivalent of 15 days of the monthly rental charge (+VAT) with a minimum fee of £450 (inc.VAT) up to a maximum of £650 (inc.VAT). Other fees may apply depending on your circumstances.

0118 9776 776

lettings@michael-hardy.co.uk www.michael-hardy.co.uk

Michael Hardy Lettings, 9 Broad Street, Wokingham, , RG40 1AU

Heating Type): Electric

Water supply: Mains

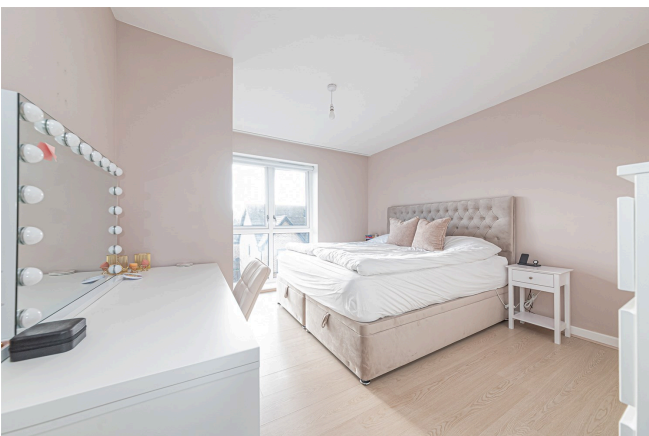
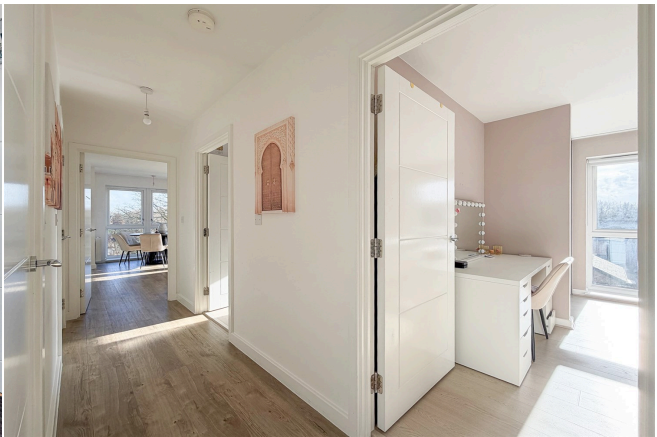
Drainage info: Mains

Electricity supply: Mains

Gas supply:

Broadband/Mobile Info: Connections available. For an indication of specific speeds and supply of Broadband and Mobile, we advise applicants go to the Ofcom website Broadband and Mobile Coverage Checker.

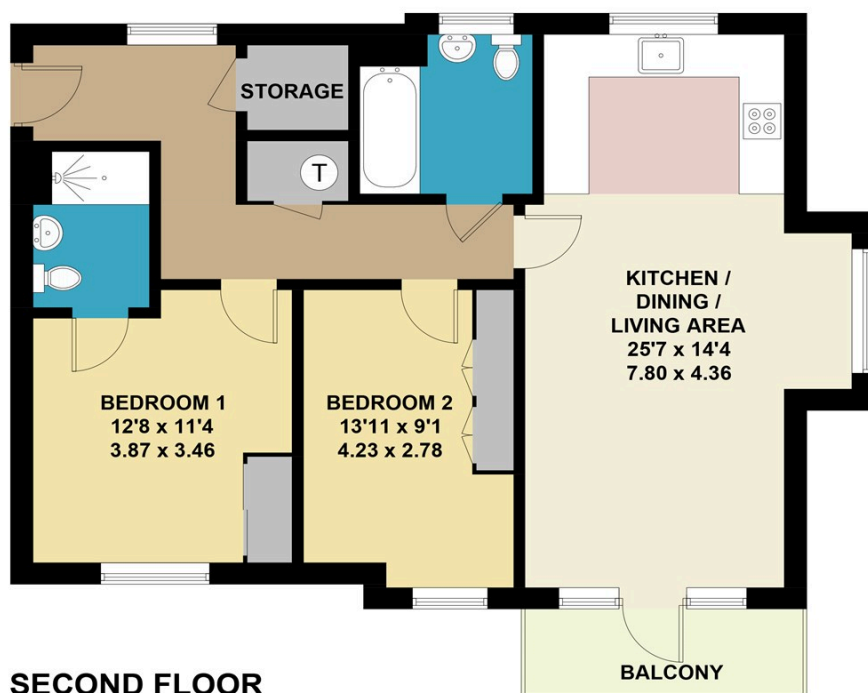






Gosling Court, Arborfield Green

Approximate Gross Internal Area = 837 sq ft / 77.8 sq m

**SECOND FLOOR**

This plan is for layout guidance only. Not drawn to scale unless stated. Windows and door openings are approximate. Whilst every care is taken in the preparation of this plan, please check all dimensions, shapes and compass bearings before making any decisions reliant upon them. (ID1270843)
Produced by BlueSky Estate Agency Services on behalf of Michael Hardy