

Property ref: 137823



Culver Grove, Wokingham, RG40 5AG

£1,650 PCM



Beautifully Presented Two Bedroom House Situated Within Walking Distance of Keephatch and St Crispins School. Entrance Hallway, Cloakroom. Modern Open Plan Living Area With Patio Access To Private Garden, Two Spacious Double Bedrooms Both With Fitted Wardrobe, Well Appointed Family Bathroom with Bath And Separate Shower Cubicle. Private Garden With Shed And Rear Access. Two Allocated Parking Spaces. EPC Rating B Council Tax D. Unfurnished.

Available 12/06/2024

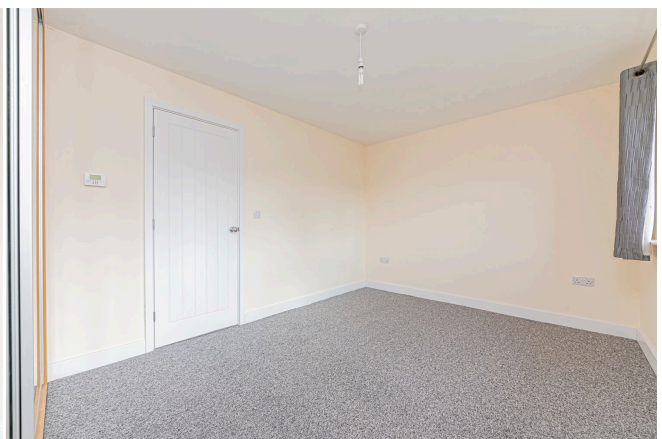
- Modern Two Bedroom Property In Popular Wokingham
- Generous Two Double Bedroom With Fitted Wardrobes
- Spacious Living Area Patio To Garden
- Two Allocated Parking Spaces
- Family Bathroom With Separate Shower Cubicle
- Unfurnished

*Fees For Assured Shorthold Tenancies: when you rent a property from us you will be required to pay a sum equivalent to one weeks' rent for a holding deposit. Upon successful application, this amount will be off set against your first months' rent. You will also be required to pay a security deposit equivalent to 5 weeks' rent which will be held and protected in line with Deposit legislation. For more information about our fees please visit: www.michael-hardy.co.uk
Fees for all other tenancies (Non Housing Act Tenancies / Company Lets): when you rent a property from us we will charge you a one-off fee per property. This charge is the equivalent of 15 days of the monthly rental charge (+VAT) with a minimum fee of £450 (inc.VAT) up to a maximum of £650 (inc.VAT). Other fees may apply depending on your circumstances.

0118 9776 776

lettings@michael-hardy.co.uk www.michael-hardy.co.uk

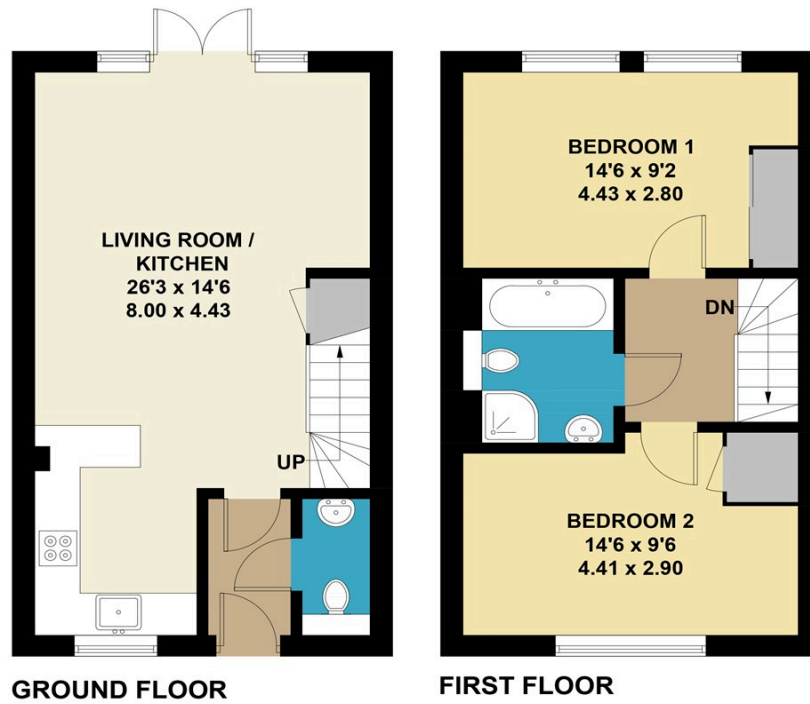
Michael Hardy Lettings, 9 Broad Street, Wokingham, , RG40 1AU





Culver Grove, Wokingham

Approximate Gross Internal Area = 72.0 sq m / 775 sq ft



This plan is for layout guidance only. Not drawn to scale unless stated. Windows and door openings are approximate. Whilst every care is taken in the preparation of this plan, please check all dimensions, shapes and compass bearings before making any decisions reliant upon them. (ID791214)