

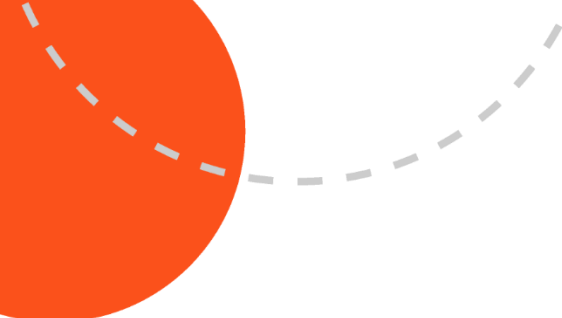


Turret Cottages, High Road, Hockley, SS5 4TG

Two Bedroom Semi-Detached Cottage / Price: £550,000 / Tel: 01702 207720







It is almost impossible within the confines of a brochure to fully describe just how wonderful this charming **two bedroom cottage** really is. Inside, the property delivers well decorated and spacious living space to include a lounge with access onto a family room, a dining room, high quality kitchen to the ground floor and upstairs two double bedrooms and a family size bathroom. The rear garden is amazing and when you eventually reach it's end you find a detached outbuilding perfect for entertaining.

Location wise, you are close to everything with Hockley Woods, the Village shops and eateries and train station all within easy distance but stand outside the front door or in the garden and you are in the middle of the Countryside.

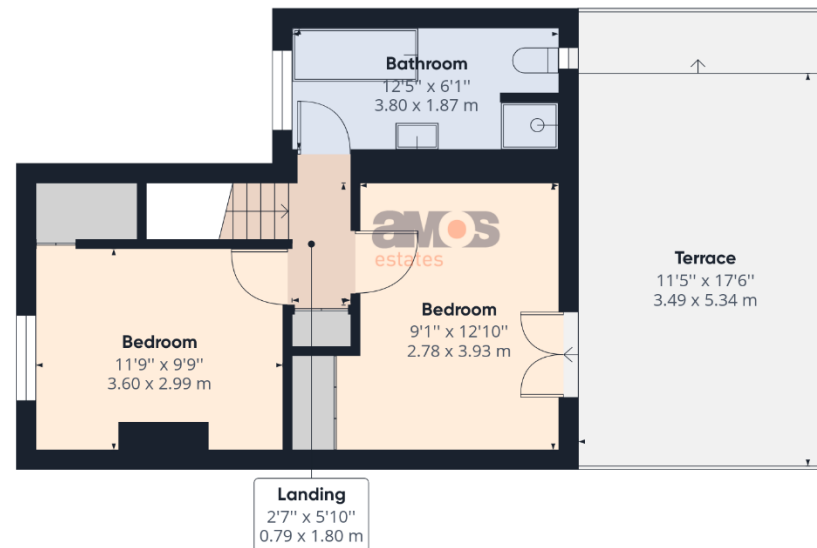
Find us on



**A space to
call home.**



Floor 0



Floor 1



Highlights

- / Two Double Bedroom Cottage
- / Well Decorated Throughout
- / High Quality Modern Kitchen
- / Fabulous Size Rear Garden With Detached Outbuilding
- / Open Plan Living
- / Four Piece Bathroom Suite
- / Close to Hockley Woods, Village Shops and Hockley Train Station.
- / Unique Character Property
- / Country Feel Setting



Entrance Hall /

Stairs to first floor accommodation, Victorian style floor tiles, door to:

Open Plan Lounge & Sitting Room /

24'7 x 19'9 > 10'2

Two double glazed windows to front aspect, solid wood flooring, feature fireplace with log burner, radiators, TV point, power points, ceiling rose with coved cornice to smooth plastered ceiling, open to:

Dining Room /

10'2 x 8'9

Double glazed French doors to rear aspect, tiling to floor, radiator, power points, ceiling rose with coved cornice to smooth plastered ceiling, open to:

Kitchen /

19'9 x 10'7

Matching range of solid wood, cottage style base and wall units with quartz square edge work surfaces, single drainer sink with inset drainer and mixer taps, space for Aga style cooker with extractor hood over, integrated dishwasher and washing machine, built in larder cupboard, tiling to floor, coved cornice and ceiling rose to smooth plastered ceiling, double glazed windows and door to rear aspect.

First Floor Accommodation /

Carpeted stairs and landing, loft access, doors to:

Bedroom One /

10'9 x 10'3 plus wardrobes

Double glazed French doors to rear aspect, range of fitted wardrobes, carpet, radiator, power points, ceiling rose to smooth plastered ceiling.





Bedroom Two /

12' x 9'1

Double glazed window to front aspect, feature fireplace, carpet, radiator, power points, picture rail, ceiling rose to smooth plastered ceiling.

Family Bathroom /

12'9 x 6'1

Four piece white suite comprising of shower cubicle, free standing Victorian style double ended roll top bath with mixer tap and shower attachment, pedestal wash hand basin with mixer tap, low level WC, radiator, tiling to floor, part tiling to walls, obscured double glazed window to front aspect, double glazed stained glass window to rear aspect, coved cornice and ceiling rose to smooth plastered ceiling.

Substantial Rear Garden /

Stunning South backing garden, paved patio seating area leading to large lawn area with beautiful mature tree and shrub borders, brick built Lynch gate archway leading to further lawn area, to the rear of the garden there is an outbuilding/workshop accessed via a low, gated picket fence which offers power and lighting. A private gate can also be found at the rear of the garden which leads to the Hockley Woods.

Front Of Property /

Access to the property is via a long private driveway, block paved driveway for vehicles, recess porch area, side access to garden. Please note there is also an additional parking space next to the detached garage.

Detached Garage /

14'10 X 11'

Power and lighting.





PLEASE NOTE:-

We recommend our customers use our panel of Conveyancers/Solicitors. It is your decision whether you choose to deal with our recommendation, and you are under no obligation to do so. You should know that we may receive a referral fee of £150 to £200 per transaction from them.

Should you arrange a Mortgage through our recommended mortgage advisor, again of which there is no obligation we will receive a commission fee. The amount of commission will depend on the size of the loan and any associated products that you decide to take.

The Consumer Protection from Unfair Trading Regulations 2008 (CPRs).

These details are for guidance only and complete accuracy cannot be guaranteed. If there is any point, which is of particular importance, verification should be obtained. They do not constitute a contract or part of a contract. All measurements are approximate. No guarantee can be given with regard to planning permissions or fitness for purpose. No apparatus, equipment, fixture or fitting has been tested. Items shown in photographs are NOT necessarily included. Interested Parties are advised to check availability and make an appointment to view before travelling to see a property.







at the heart of property.

Our professional and personal approach to property isn't just limited to residential sales. With a thriving commercial team, a dedicated mortgages expert and the longest established lettings and management department in Hadleigh and Hockley, we offer clients an exceptional experience, no matter what service they need.

Hadleigh Office: 319 London Road, Essex SS7 2BN **t:** 01702 555 888 **e:** hadleigh@amosstates.com

Hockley Office: 1A Spa Road, Hockley, Essex, SS5 4AZ **t:** 01702 207 720 **e:** hockley@amosstates.com

amosstates.com