



Lockhart Way, Northstowe Cambridge
£400,000 **Freehold**

**Sharman
Quinney**

Key Features



- Semi-Detached
- Private courtyard
- Allocated parking
- Open plan living
- Spacious double bedrooms

The spacious ground floor features a stylish and bright open-plan kitchen, dining, and living area, perfect for both relaxing and entertaining. The kitchen also provides high-level integrated appliances and ample worktop surfaces, creating a seamless and functional space. Additionally, you will find opening French doors to overlook the nature reserve and a convenient downstairs WC for practicality.

The first floor offers two Spacious sized double bedrooms with built in storage units, ideal for family members or guests. A modernised family bathroom is also located on this level, alongside a useful utility cupboard which consists of the washing machine and provides further storage space.



The top floor is dedicated to the main bedroom, complete with an en-suite shower room ensuring further privacy. A fourth bedroom on this floor offers flexibility- perfect for a home office, guest bedroom or dressing room. With a well-thought-out layout, quality finishes, and Plenty of storage throughout, this home delivers comfort and style across three smartly designed levels, perfect for a family home.

Ground Floor

Kitchen /lounge / diner - 10.30m x 4.70m

WC - 1.79m x 0.80m

1st floor

Bedroom 3 - 4.00m x 4.70m

Bedroom 4 - 3.66m x 4.70m

Bathroom - 2.44m x 2.55m

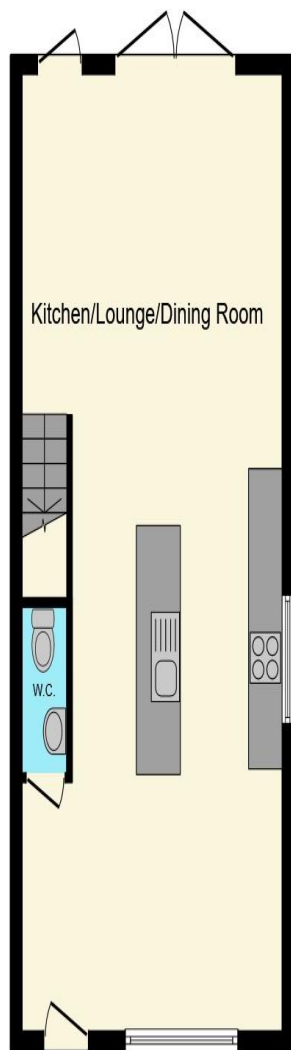
2nd floor

Bedroom 2 - 3.97m x 2.00m

Bedroom 1 - 3.42m x 4.70m

En-suite - 2.66m x 2.55m

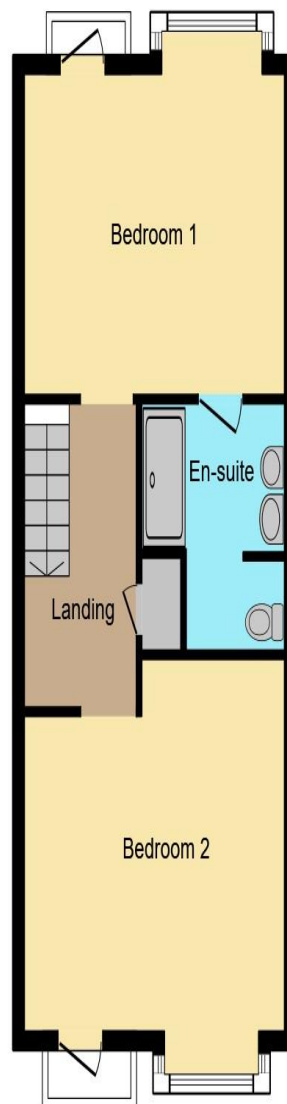




Ground Floor



First Floor



Second Floor

This floor plan is for illustrative purposes only. It is not drawn to scale. Any measurements, floor areas (including any total floor area), openings and orientation are approximate. No details are guaranteed, they cannot be relied upon for any purpose and they do not form part of any agreement. No liability is taken for any error, omission or misstatement. A party must rely upon its own inspection(s). Powered by www.focalagent.com

To view this property call Sharman Quinney on:
01954 710620

Selling your property?

Contact us to arrange a **FREE** home valuation.

 01954 710620

 Unit 5 Orchard House Unwin Square, Orchard Park, CAMBRIDGE, Cambridgeshire, CB4 2AD

 cambourne@sharmanquinney.co.uk

 www.sharmanquinney.co.uk



 SCAN ME



Sharman Quinney Holdings Limited is registered in England and Wales under company number 4174227, Registered Office is Cumbria House, 16-20 Hockliffe Street, Leighton Buzzard, Bedfordshire, LU7 1GN. VAT Registration Number is 500 2481 05.

1: These particulars do not constitute part or all of an offer or contract. 2: The measurements indicated are supplied for guidance only and as such must be considered incorrect. 3: Potential buyers are advised to recheck the measurements before committing to any expense. 4: Sharman Quinney has not tested any apparatus, equipment, fixtures, fittings or services and it is the buyers interests to check the working condition of any appliances. 5: Sharman Quinney has not sought to verify the legal title of the property and buyers must obtain verification from their legal representative. 6: Intending purchasers will be asked to produce identification documentation at a later stage and we would ask your co-operation in order that there will be no delay in agreeing the sale. Ref: ORP101963 - 0004

