

Parkheath

Sold on Service

Chevening Road NW6

£2,650 PCM (£612 per week) - Brent Band D

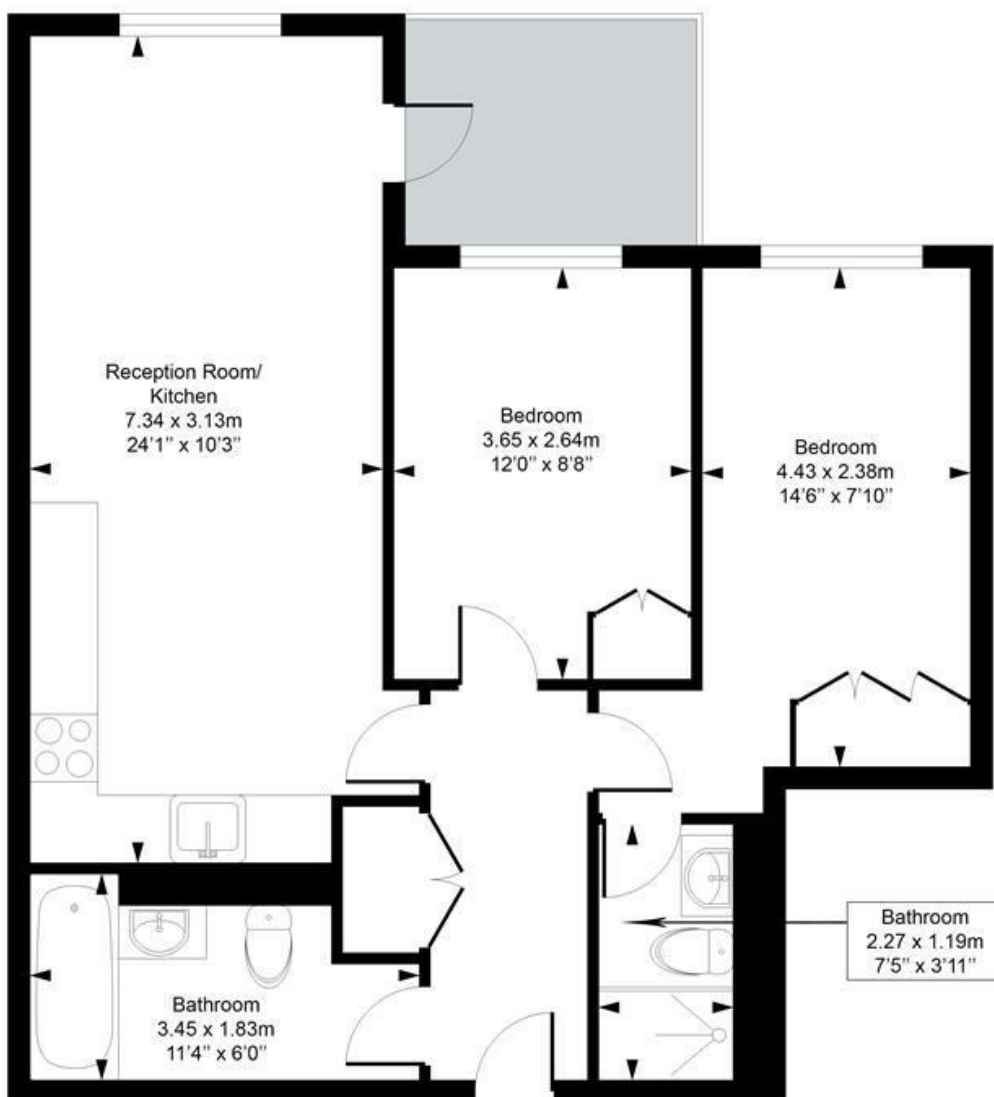


Smart 2 double bedroom apartment
Reception room with wood flooring
Two bathrooms (one en suite shower room)
Underfloor heating and double glazing
Within walking distance of Kensal Rise's shops
and transport links

First floor of a modern development
Open plan fitted kitchen
Private terrace plus access to communal garden
Excellent location moments from Queen's Park
EPC: Rating B, Council Tax: Brent Band D

Kensal Rise Office 0208 960 4845

Chevening Road
Approximate Gross Internal Area = 61.5 Sq m / 662 sq ft



First Floor

Measured in accordance with RICS guidelines. Every attempt is made to ensure accuracy
However all measurements are approximate.
The floor plan is illustrative purposes only and is not to scale
ELLIE CLAIRE PHOTOGRAPHY LTD
www.ellieclairephotography.com

The particulars do not constitute part of an offer or contract. The particulars, including text, photographs and plans, are for the guidance only of prospective purchasers/tenants and must not be relied upon as statements of fact. The descriptions provided therein represent the opinion of the author and whilst given in good faith should not be construed as statements of fact. Nothing in these particulars shall be deemed a statement that the property is in good condition or otherwise or that any services or facilities are in good working order. All measurements are approximate