

# Parkheath

*Sold on Service*

---

**Trevelyan Gardens NW10**

**£3,500 PCM (£808 per week) - Brent Band F**



Spacious semi-detached family home

Bright and generously proportioned rooms

2 large reception rooms plus a versatile conservatory

Fitted kitchen and downstairs guest cloakroom

Within easy access to Kensal Rise amenities and transport links

Set in a peaceful cul-de-sac

Mature front and rear gardens

3 well-sized bedrooms

Driveway providing off road parking for 2-3 cars

EPC: Rating D, Council Tax: Brent Band F

Kensal Rise Office 0208 960 4845



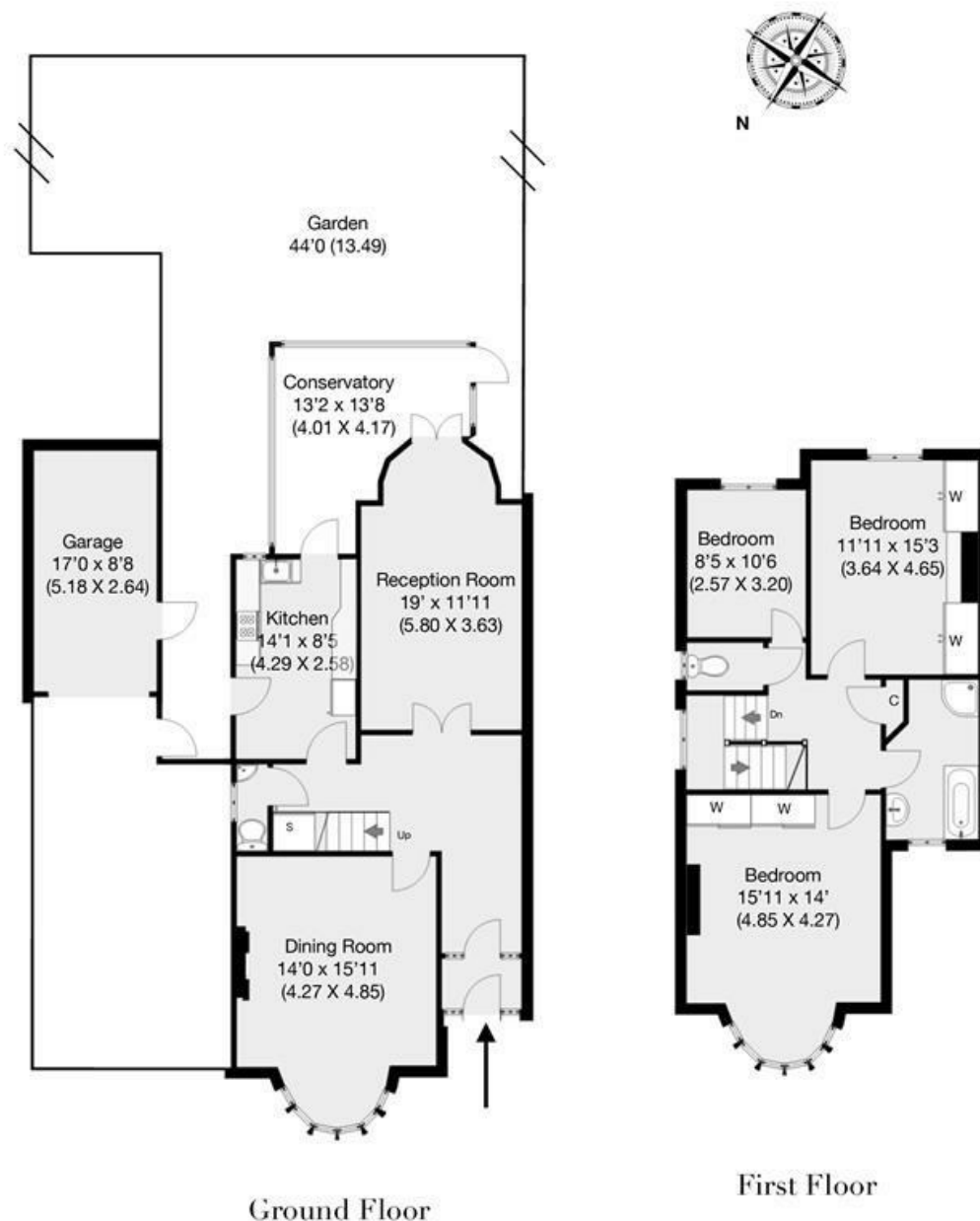
## Trevelyan Gardens, London, NW10

Approx. Total Internal Area 166.1 sqm / 1788 sqft (Inculding Outbuilding)

Approx. Area 144 sqm / 1550 sqft

Outbuilding 8.7 sqm / 94 sqft

Garage 13.6 sqm / 147 sqft



THIS FLOOR PLAN IS PRODUCED FOR PARKHEATH SUBMITTED BY **ARCHIMEDIA** web: [www.archi-media.co.uk](http://www.archi-media.co.uk)

Whilst every attempt has been made to ensure the accuracy of the floor plan contained here, measurements of doors, windows and rooms are approximate and no responsibility is taken for any error, omission or misstatement. These plans are for representation purposes only and should be used as such by any prospective buyer or lease. Specifically no guarantee is given on the gross internal floor area of the property if quoted on this plan and any figures given is initial guidance only and should be treated as such.

The particulars do not constitute part of an offer or contract. The particulars, including text, photographs and plans, are for the guidance only of prospective purchasers/tenants and must not be relied upon as statements of fact. The descriptions provided therein represent the opinion of the author and whilst given in good faith should not be construed as statements of fact. Nothing in these particulars shall be deemed a statement that the property is in good condition or otherwise or that any services or facilities are in good working order. All measurements are approximate