

# Parkheath

*Sold on Service*

---

**Oliphant Street W10**

**£3,500 PCM (£808 per week) - Westminster City Band E**



Charming late-Victorian 3 bedroom house  
Arranged over 3 floors  
Double reception room with wood flooring  
Second bedroom also with fitted storage  
  
Located just a short walk from Queen's Park station

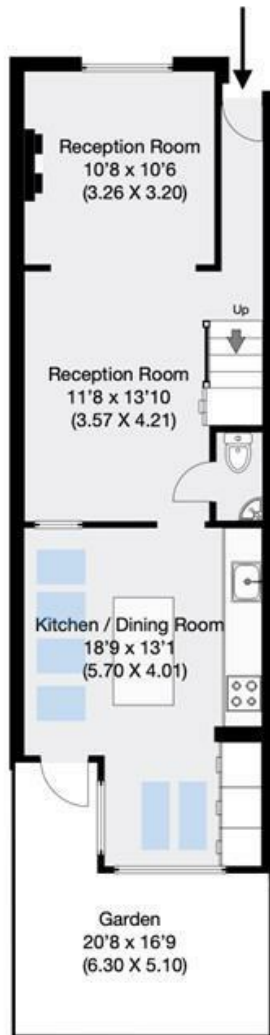
Set within the sought-after Queens Park Estate  
Stylishly extended kitchen/dining room  
Main bedroom with fitted wardrobes  
Versatile third bedroom/home office located in the converted loft  
  
EPC: Rating D, Council Tax: Westminster, Band E

Kensal Rise Office 0208 960 4845

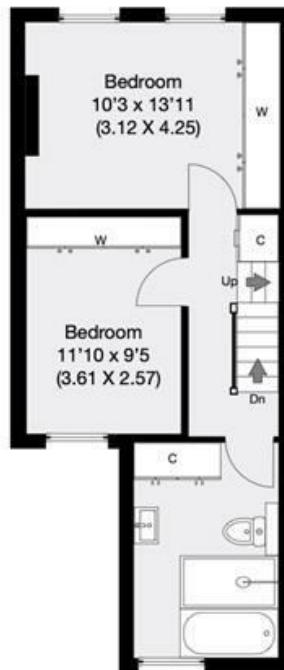


Oliphant Street, London, W10

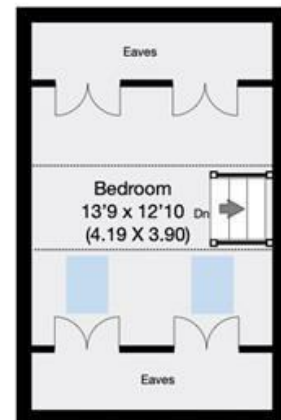
Approximate Gross Internal Area 116 sqm / 1249 sqft



Ground Floor



First Floor



Second Floor

THIS FLOOR PLAN IS PRODUCED FOR PARKHEATH SUBMITTED BY ARCHIMEDIA web: [www.archi-media.co.uk](http://www.archi-media.co.uk)

Whilst every attempt has been made to ensure the accuracy of the floor plan contained here, measurements of doors, windows and rooms are approximate and no responsibility is taken for any error, omission or misstatement. These plans are for representation purposes only and should be used as such by any prospective buyer or lease. Specifically no guarantee is given on the gross internal floor area of the property if quoted on this plan and any figures given is initial guidance only and should be treated as such.

The particulars do not constitute part of an offer or contract. The particulars, including text, photographs and plans, are for the guidance only of prospective purchasers/tenants and must not be relied upon as statements of fact. The descriptions provided therein represent the opinion of the author and whilst given in good faith should not be construed as statements of fact. Nothing in these particulars shall be deemed a statement that the property is in good condition or otherwise or that any services or facilities are in good working order. All measurements are approximate