

# Parkheath

*Sold on Service*

---

**Crediton Road NW10**

**£2,450 PCM (£565 per week) - Brent Band D**



Lovely 2 bedroom apartment

First (top) floor of an attractive period property

848 Sq Ft / 78.8 Sq M

Two double bedrooms, both with fitted cupboards

Just a few minutes' walk to Kensal Rise overground station

Located on one of Kensal Rise's most desirable roads

High ceilings and large windows throughout

Generous reception/dining room with bay window

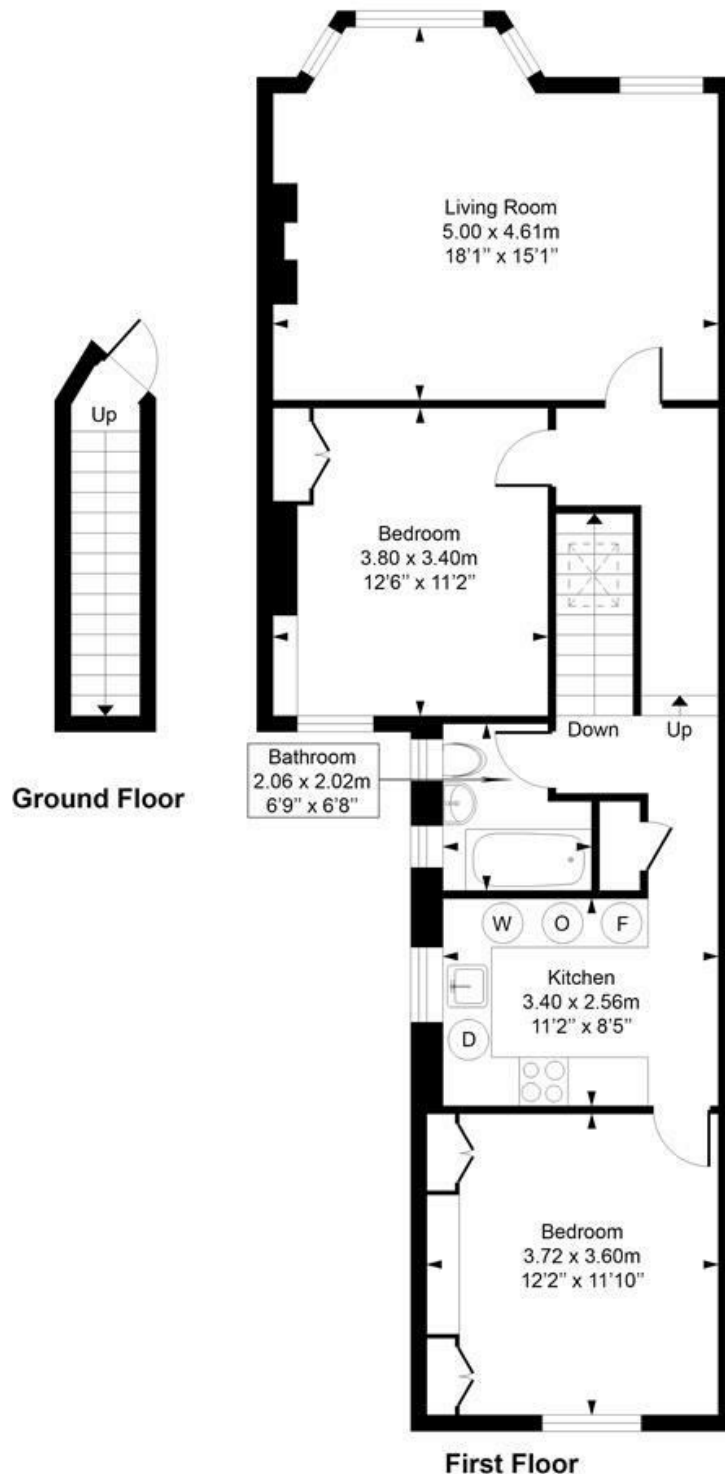
Modern fitted kitchen with integrated appliances

EPC: Rating C, Council Tax: Brent band D

Kensal Rise Office 0208 960 4845

## Crediton Road

Approximate Gross Internal Area = 78.8 Sq m / 848 sq ft



Measured in accordance with RICS guidelines. Every attempt is made to ensure accuracy  
However all measurements are approximate.  
The floor plan is illustrative purposes only and is not to scale  
ELLIE CLAIRE PHOTOGRAPHY LTD  
[www.ellieclairephotography.com](http://www.ellieclairephotography.com)

The particulars do not constitute part of an offer or contract. The particulars, including text, photographs and plans, are for the guidance only of prospective purchasers/tenants and must not be relied upon as statements of fact. The descriptions provided therein represent the opinion of the author and whilst given in good faith should not be construed as statements of fact. Nothing in these particulars shall be deemed a statement that the property is in good condition or otherwise or that any services or facilities are in good working order. All measurements are approximate