

# Parkheath

*Sold on Service*

---

**Maida Vale W9**

**£4,450 PCM (£1,027 per week) - Westminster City Band G**



Impressive mansion apartment

Lift access & porter

Separate fully fitted kitchen

2 family bathrooms & 1 en suite shower

Walking distance to Maida Vale underground station

Prestigious purpose built building

Large 30' reception/dining room with wood floors

3 double bedrooms

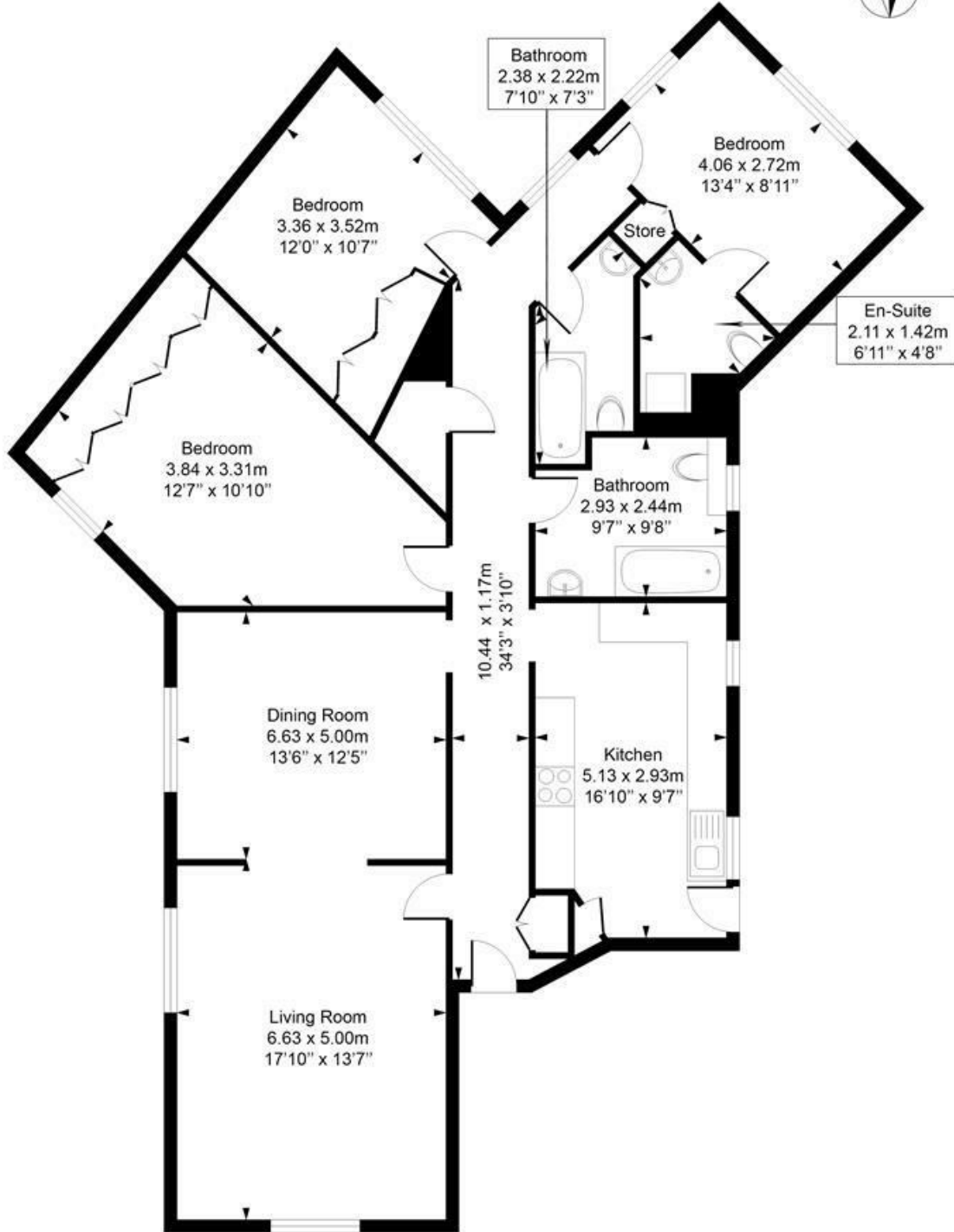
1454 Sq Ft / 135 Sq M

EPC: Rating: C, Council Tax: Westminster City band G

Kensal Rise Office 0208 960 4845

# Maida Vale

Approximate Gross Internal Area = 135.1 Sq m / 1454 sq ft



## First Floor

Measured in accordance with RICS guidelines. Every attempt is made to ensure accuracy  
However all measurements are approximate.  
The floor plan is illustrative purposes only and is not to scale  
ELLIE CLAIRE PHOTOGRAPHY LTD  
[www.ellieclairephotography.com](http://www.ellieclairephotography.com)

The particulars do not constitute part of an offer or contract. The particulars, including text, photographs and plans, are for the guidance only of prospective purchasers/tenants and must not be relied upon as statements of fact. The descriptions provided therein represent the opinion of the author and whilst given in good faith should not be construed as statements of fact. Nothing in these particulars shall be deemed a statement that the property is in good condition or otherwise or that any services or facilities are in good working order. All measurements are approximate