

# Parkheath

*Sold on Service*

---

**Kempe Road NW6**  
**£3,950 PCM (£912 per week) - Brent Band F**



Mid-terrace Victorian house

Arranged over 2 floors

Retaining many period features and high ceilings throughout

Country style kitchen/diner leading to small patio garden

Served by excellent local amenities in both Queens Park and Kensal Rise

Sought after location, moments to Queens Park

1529 Sq Ft / 142.1 Sq M

Sitting room and separate dining room

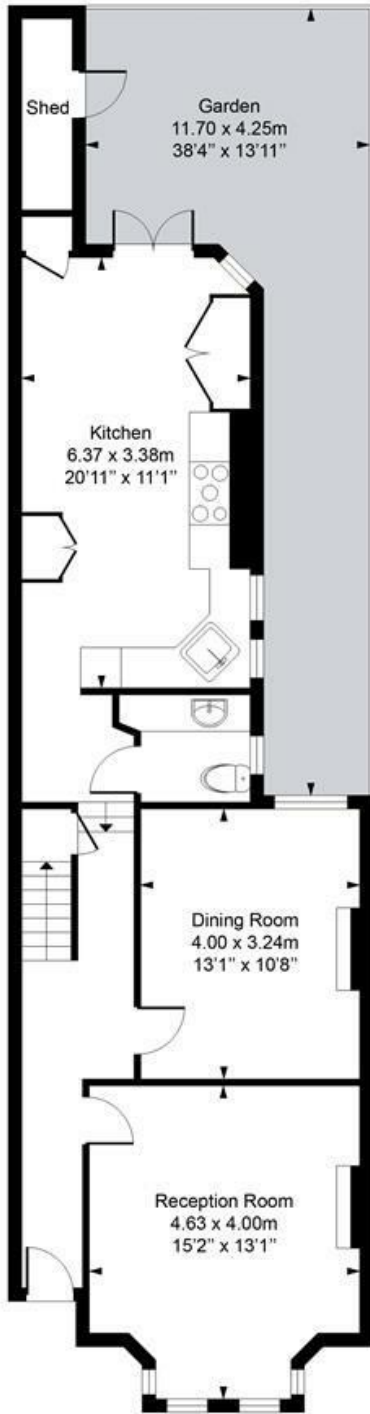
3 double bedrooms

EPC: Rating D, Council Tax: Brent band F

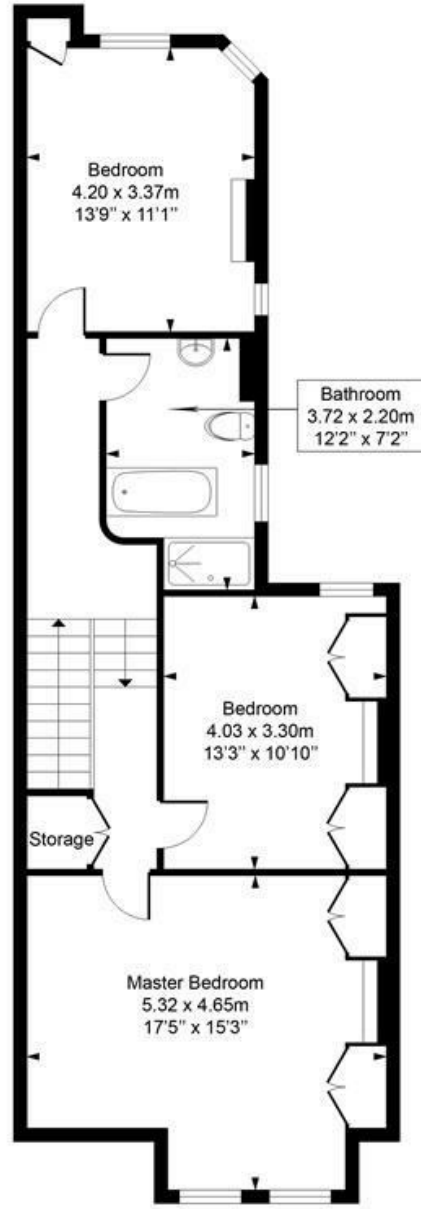
Kensal Rise Office 0208 960 4845

# Kempe Road

Approximate Gross Internal Area = 142.1 Sq m / 1529 sq ft



**Ground Floor**



**First Floor**

Measured in accordance with RICS guidelines. Every attempt is made to ensure accuracy  
However all measurements are approximate.

The floor plan is illustrative purposes only and is not to scale

ELLIE CLAIRE PHOTOGRAPHY LTD

[www.ellieclairephotography.com](http://www.ellieclairephotography.com)

The particulars do not constitute part of an offer or contract. The particulars, including text, photographs and plans, are for the guidance only of prospective purchasers/tenants and must not be relied upon as statements of fact. The descriptions provided therein represent the opinion of the author and whilst given in good faith should not be construed as statements of fact. Nothing in these particulars shall be deemed a statement that the property is in good condition or otherwise or that any services or facilities are in good working order. All measurements are approximate