



Lushington Road NW10

Parkheath
Sold on Service





Lushington Road, NW10 £725,000 Share of Freehold

- Spacious 1920's built ground floor apartment
- Exclusive access to a 46ft rear garden
- Large reception room at the front of the building
- Separate eat-in kitchen with direct garden access
- Three double bedrooms located at the rear
- Ample potential for personalization by new owners
- Excellent expansion potential, subject to planning permission
- Picturesque tree-lined Lushington Road in Kensal Green
- Short stroll to King Edward VII Park, Kensal Green and Willesden Junction stations
- EPC: Rating D, Council Tax: Brent band D

Belsize Park/Hampstead
208 Haverstock Hill
NW3 2AG
Sales 020 7431 1234
Lettings 020 7431 3104
nw3@parkheath.com

South/West Hampstead
192 West End Lane
NW6 1SG
Sales & Lettings
Tel 020 7794 7111
192@parkheath.com

Kensal Rise
54-56 Chamberlayne Rd
NW10 3JH
Tel 020 8960 4845
kensal@parkheath.com

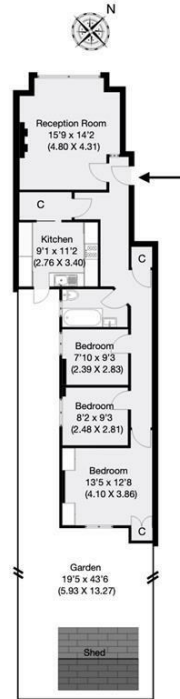
Property Management
192 West End Lane
NW6 1SG
020 7433 6174
pm@parkheath.com

www.parkheath.com

Parkheath
Sold on Service

Brent Tax band D

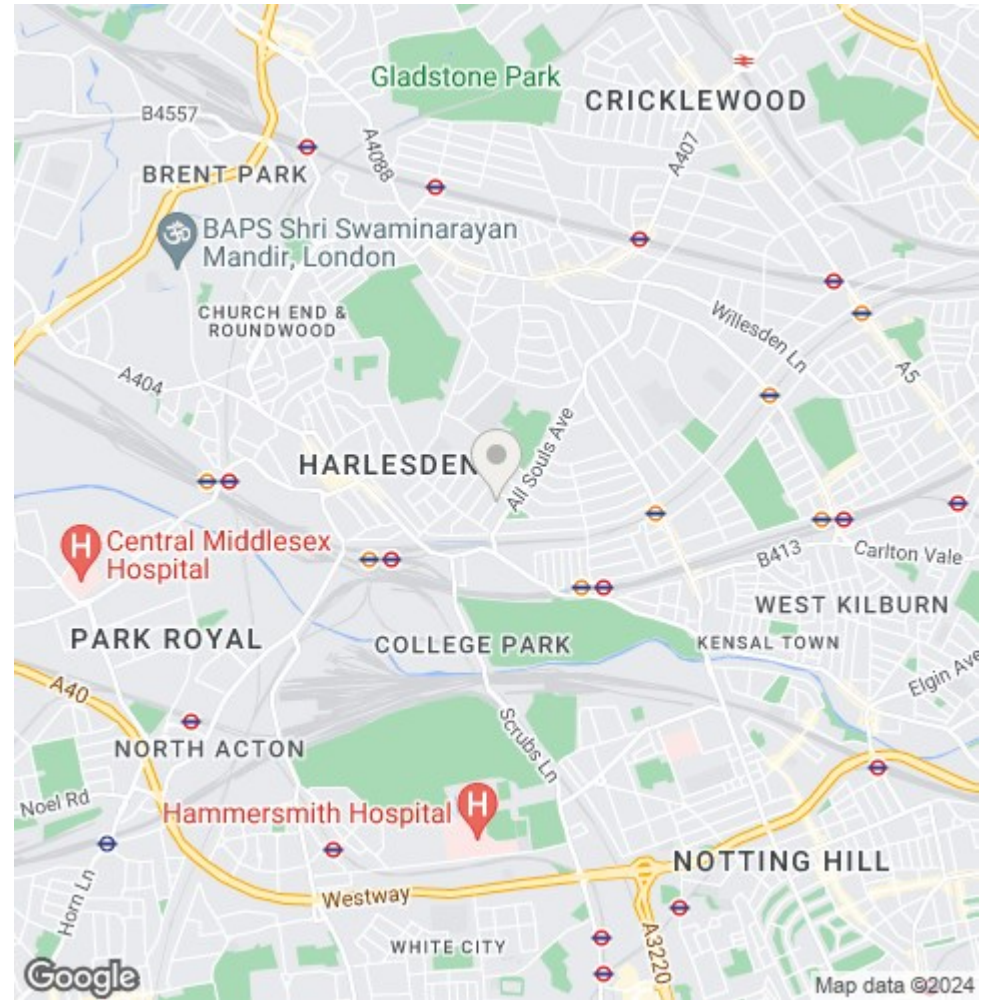

Lushington Road, London, NW10
 Approximate Gross Internal Area 82 sqm / 883 sqft



Ground Floor

THIS FLOOR PLAN IS PRODUCED FOR PARKHEATH SUBMITTED BY ARCHIMEDIA web: www.archi-media.co.uk

Whilst every attempt has been made to ensure the accuracy of the floor plan contained herein, measurements of doors, windows and rooms are approximate and no responsibility is taken for any error, omission or misstatement. These plans are for representation purposes only and should be used as such for any prospective buyer or lease. Specifically no guarantee is given on the gross internal floor area of the property if quoted on this plan and any figures given in initial guidance only and should be treated as such.



The particulars do not constitute part of an offer or contract. The particulars, including text, photographs and plans, are for the guidance only of prospective purchasers/tenants and must not be relied upon as statements of fact. The descriptions provided therein represent the opinion of the author and whilst given in good faith should not be construed as statements of fact. Nothing in these particulars shall be deemed a statement that the property is in good condition or otherwise or that any services or facilities are in good working order. All measurements are approximate