

Parkheath

Sold on Service

Brondesbury Villas NW6

£2,350 PCM (£542 per week) - Brent Band E



2 double bedroom flat

2 bathrooms (1 en suite)

First floor within a double fronted period conversion

Easy access to local shops and amenities on Salusbury Road

EPC energy rating C

720 Sq Ft / 66.9 Sq M

Wood floors throughout

Open plan kitchen/reception area

0.2 miles to Queens Park underground (Bakerloo line, zone 2)

Council tax: Brent band E

Kensal Rise Office 0208 960 4845

Brondesbury Villas

Approximate Gross Internal Area = 66.9 sq m / 720 sq ft

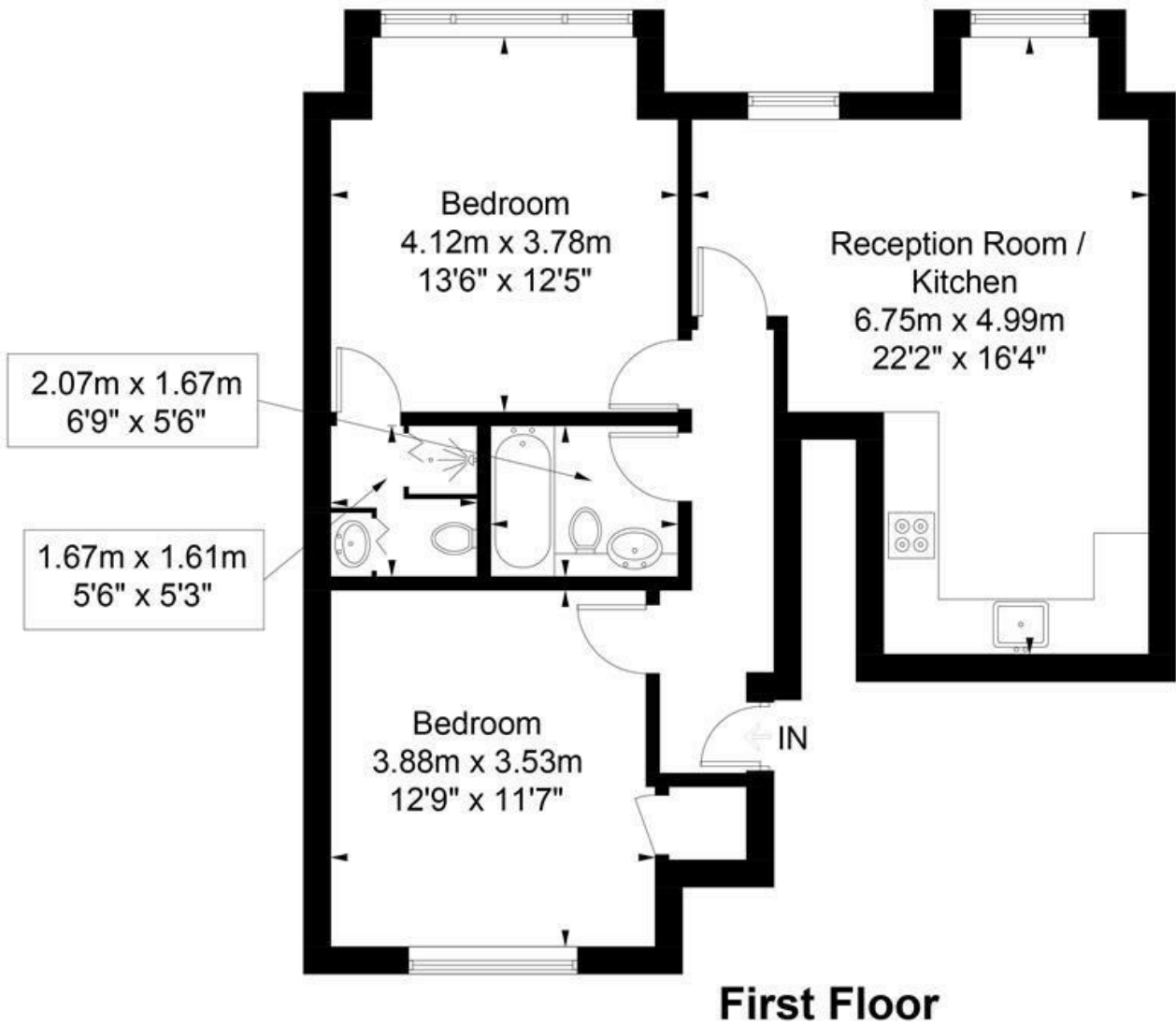


Illustration for identification purposes only, measurements are approximate,
not to scale. FloorplansUsketch.com © 2018 (ID458692)
ELLIE CLAIRE PHOTOGRAPHY LTD

The particulars do not constitute part of an offer or contract. The particulars, including text, photographs and plans, are for the guidance only of prospective purchasers/tenants and must not be relied upon as statements of fact. The descriptions provided therein represent the opinion of the author and whilst given in good faith should not be construed as statements of fact. Nothing in these particulars shall be deemed a statement that the property is in good condition or otherwise or that any services or facilities are in good working order. All measurements are approximate