



Wakeman Road NW10

Parkheath  
*Sold on Service*





## Wakeman Road, NW10 £700,000 Leasehold

- Modern apartment
- Secure building
- 2 double bedrooms, 2 bathrooms
- Large open plan living space
- South facing terrace
- 1st floor
- Moments to transport
- Short walk to Kensal Rise and Notting hill
- Secure Underground parking.
- EPC: Rating B, Council Tax: Brent band D



**Parkheath**  
*Sold on Service*

**Brent Tax band D**

Belsize Park/Hampstead  
208 Haverstock Hill  
NW3 2AG  
Sales 020 7431 1234  
Lettings 020 7431 3104  
[nw3@parkheath.com](mailto:nw3@parkheath.com)

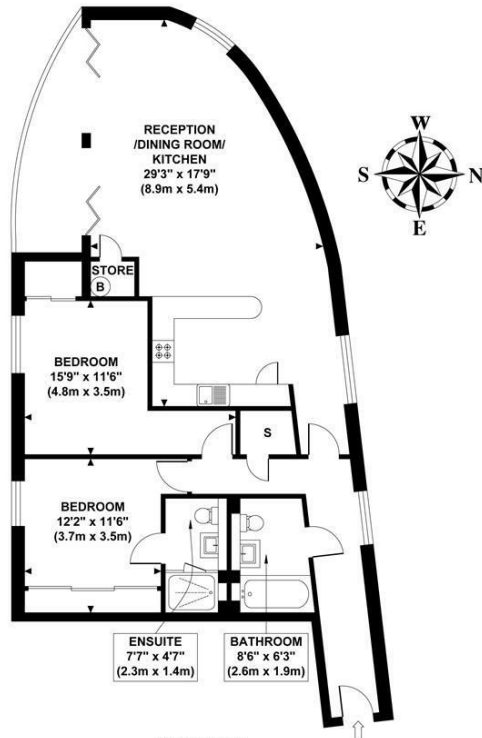
Kensal Rise  
54-56 Chamberlayne Rd  
NW10 3JH  
Tel 020 8960 4845  
[kensal@parkheath.com](mailto:kensal@parkheath.com)

South/West Hampstead  
192 West End Lane  
NW6 1SG  
Sales & Lettings  
Tel 020 7794 7111  
[192@parkheath.com](mailto:192@parkheath.com)

Property Management  
192 West End Lane  
NW6 1SG  
020 7433 6174  
[pm@parkheath.com](mailto:pm@parkheath.com)

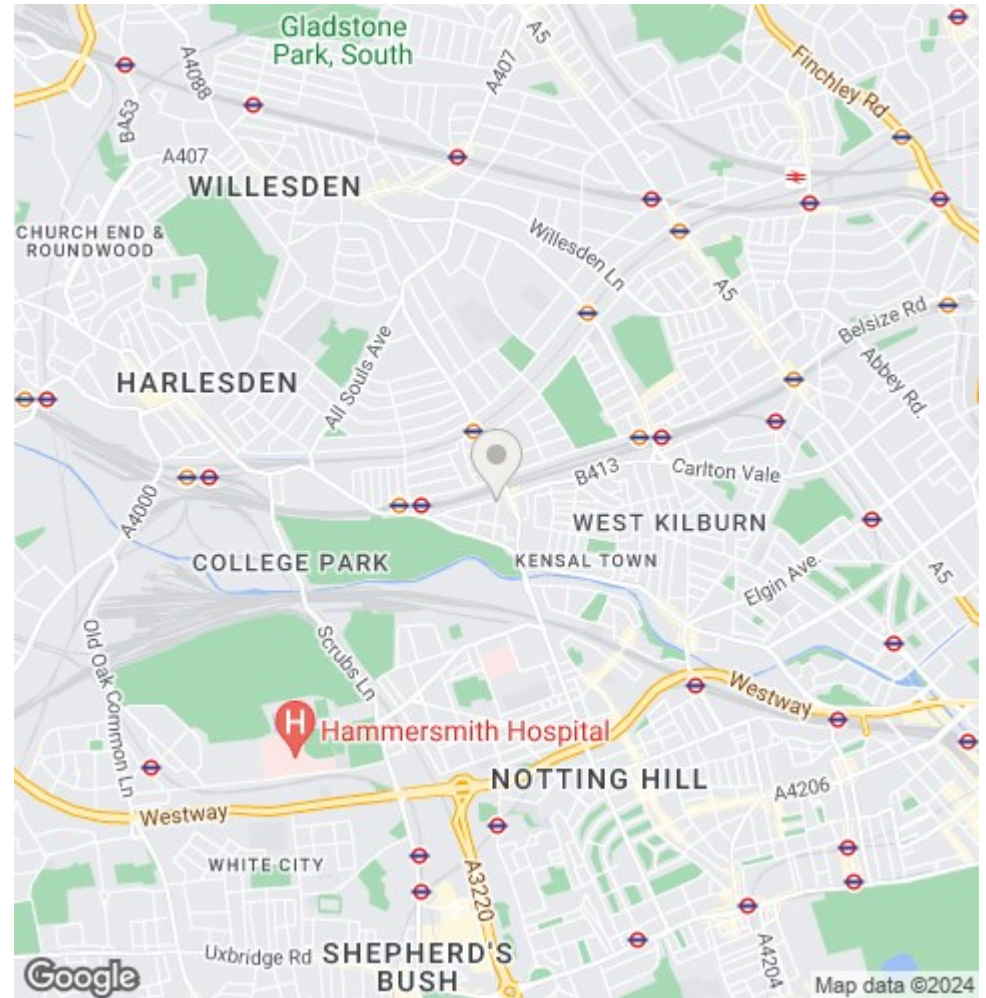
[www.parkheath.com](http://www.parkheath.com)

**RHAPSODY COURT**  
 Approximate Gross Internal Area  
 939 sq ft / 87.20 sq m



FIRST FLOOR  
 GROSS INTERNAL  
 FLOOR AREA 939 SQ FT

Although every attempt has been made to ensure accuracy, all measurements are approximate and no responsibility is taken for any error, omission, or mid-statement. This floor plan is for illustrative purposes only and not to scale. Measured in accordance to RICS standards. GB PRO PHOTOS



The particulars do not constitute part of an offer or contract. The particulars, including text, photographs and plans, are for the guidance only of prospective purchasers/tenants and must not be relied upon as statements of fact. The descriptions provided therein represent the opinion of the author and whilst given in good faith should not be construed as statements of fact. Nothing in these particulars shall be deemed a statement that the property is in good condition or otherwise or that any services or facilities are in good working order. All measurements are approximate