

# Parkheath

*Sold on Service*

---

## Brondesbury Villas NW6

**£1,650 PCM (£381 per week) - Brent Band E**



Smart 1 bedroom flat

Open plan modern kitchen

5 minute walk to Queens Park underground

Council Tax: Brent band E

Wooden floors throughout

1st floor conversion

Close to shops and amenities on Salusbury Road

EPC: Rating C

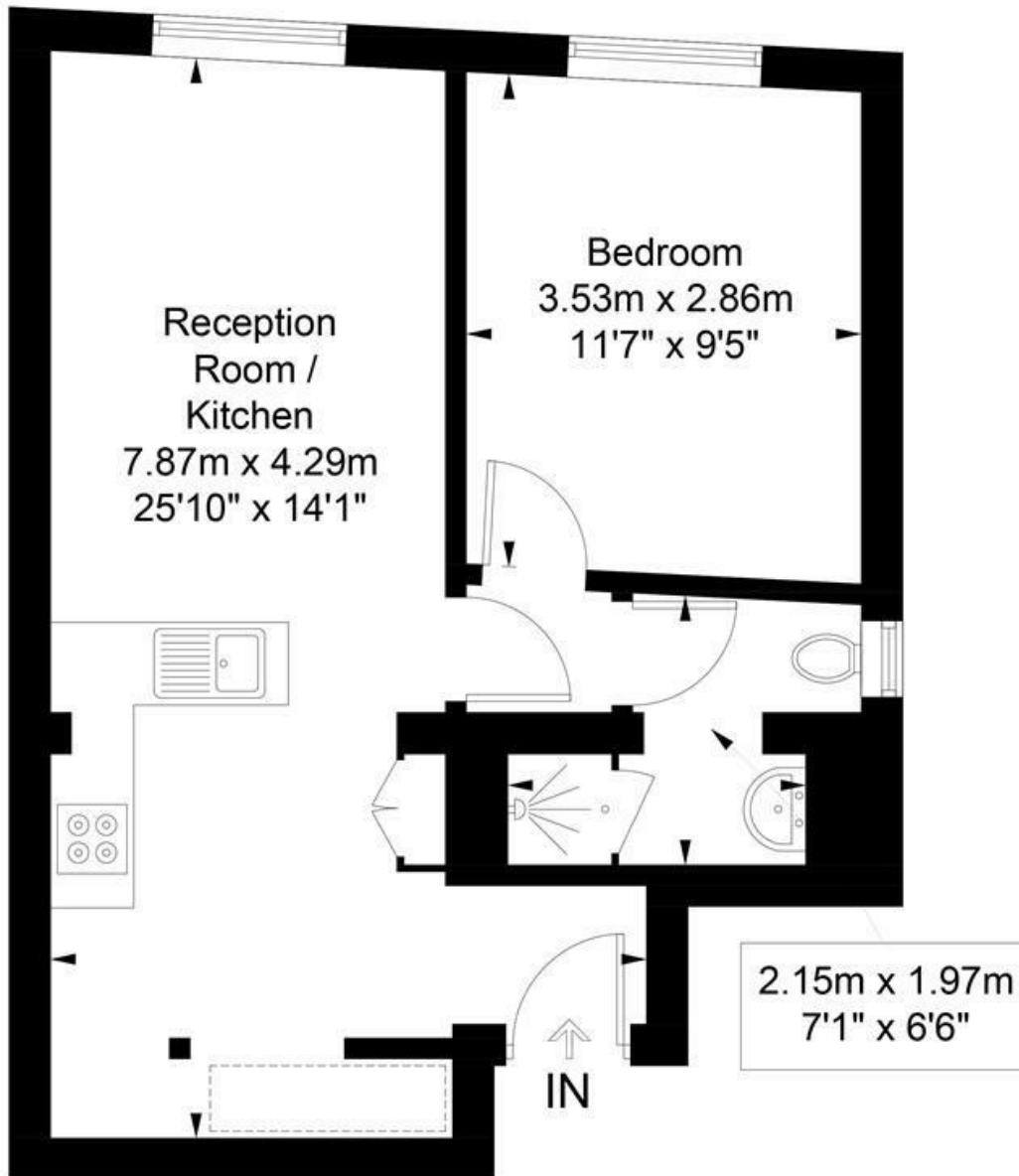
Kensal Rise Office 0208 960 4845

# Brondesbury Villas

Approximate Gross Internal Area = 41 sq m / 441 sq ft



= Reduced headroom below 1.5m / 5'0



## First Floor

Illustration for identification purposes only, measurements are approximate, not to scale. FloorplansUsketch.com © 2018 (ID399934)  
ELLIE CLAIRE PHOTOGRAPHY LTD

The particulars do not constitute part of an offer or contract. The particulars, including text, photographs and plans, are for the guidance only of prospective purchasers/tenants and must not be relied upon as statements of fact. The descriptions provided therein represent the opinion of the author and whilst given in good faith should not be construed as statements of fact. Nothing in these particulars shall be deemed a statement that the property is in good condition or otherwise or that any services or facilities are in good working order. All measurements are approximate