

Parkheath

Sold on Service

Portobello Road W11

£1,650 PCM (£381 per week) - Kensington & Chelsea Band C



1 bedroom apartment

Communal roof terrace

Wooden floors

Top floor (3rd) above commercial premises

EPC: Rating D

Highly fashionable location

15'9 reception room

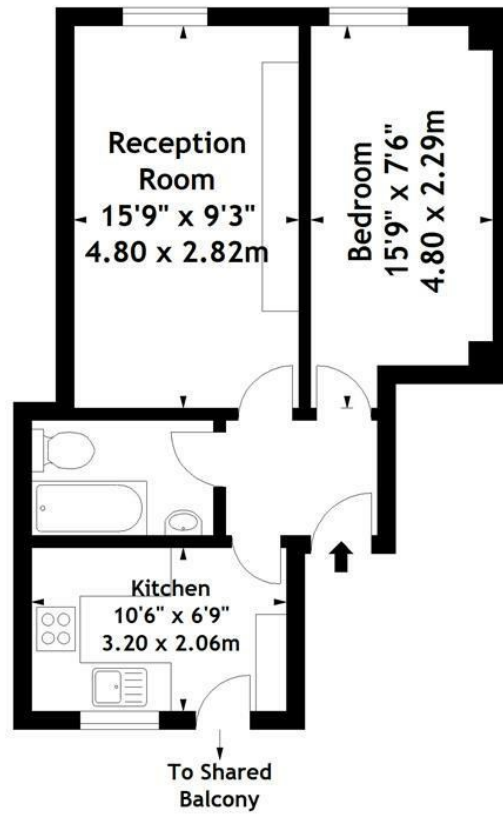
Located within the heart of Portobello Road

Walking distance to Ladbroke Grove Underground

Council Tax: Kensington & Chelsea band C

Kensal Rise Office 0208 960 4845

Portobello Road,
Notting Hill, W11
Approx. Gross Internal Area
411 Sq Ft - 38.18 Sq M



Third Floor

Measured in accordance with RICS guidelines. Every attempt is made to ensure accuracy, however all measurements are approximate. This floor plan is for illustrative purposes only and is not to scale.
© Datagraphy Ltd 2016
Photographs * Floorplans * Virtual Tours
Tel: 0845 643 4401 www.datagraphy.com

The particulars do not constitute part of an offer or contract. The particulars, including text, photographs and plans, are for the guidance only of prospective purchasers/tenants and must not be relied upon as statements of fact. The descriptions provided therein represent the opinion of the author and whilst given in good faith should not be construed as statements of fact. Nothing in these particulars shall be deemed a statement that the property is in good condition or otherwise or that any services or facilities are in good working order. All measurements are approximate