



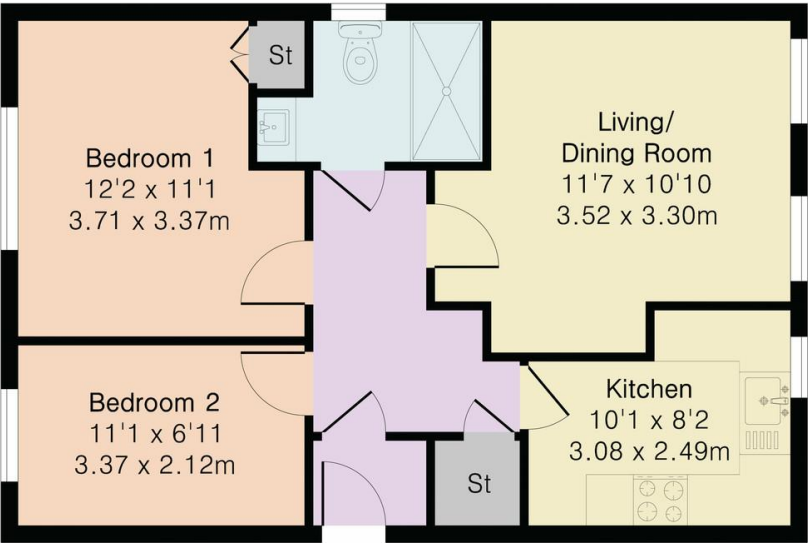
Steven Oates are pleased to offer for let this two bedroom modern apartment situated within this ideal location for both Hertford North mainline station and Hertford town centre. This ground floor property includes many great features such as double glazing, gas central heating, separate kitchen, shower room and a spacious lounge. Offered unfurnished and available 13th of February 2026.



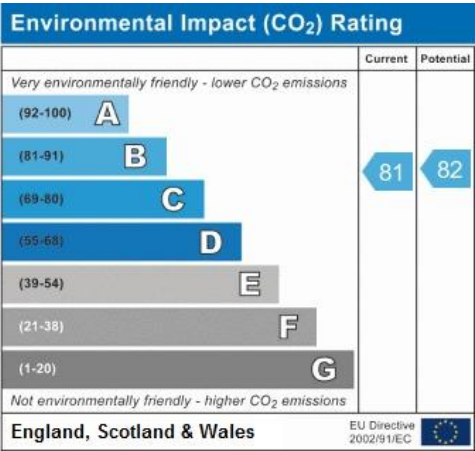
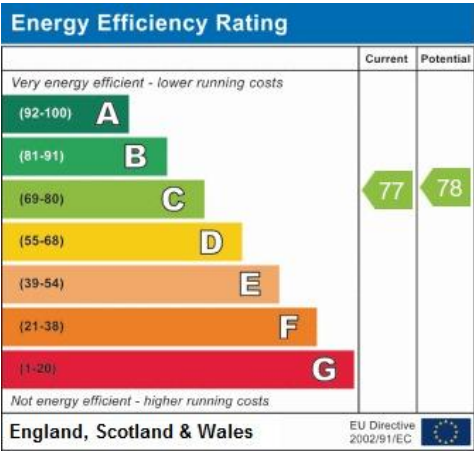




Approximate Gross Internal Area 580 sq ft - 54 sq m



Ground Floor Flat



Floor plan produced in accordance with RICS Property Measurement 2nd Edition. Although Pink Plan Ltd ensures the highest level of accuracy, measurements of doors, windows and rooms are approximate and no responsibility is taken for error, omission or misstatement. These plans are for representation purposes only and no guarantee is given on the total square footage of the property within this plan. The figure icon is for initial guidance only and should not be relied on as a basis of valuation.





Whilst we endeavour to make our sales particulars fair, accurate and reliable, they are only intended as a general guide to the property. Measurements and distances are approximate. These particulars do not form part of any offer or contract. If there are important matters that are likely to affect your decision to buy, please contact us before viewing the property. Please note that we have not tested the services, equipment or appliances in this property, accordingly, we advise prospective buyers to commission their own survey or service reports before finalising any offer to purchase.