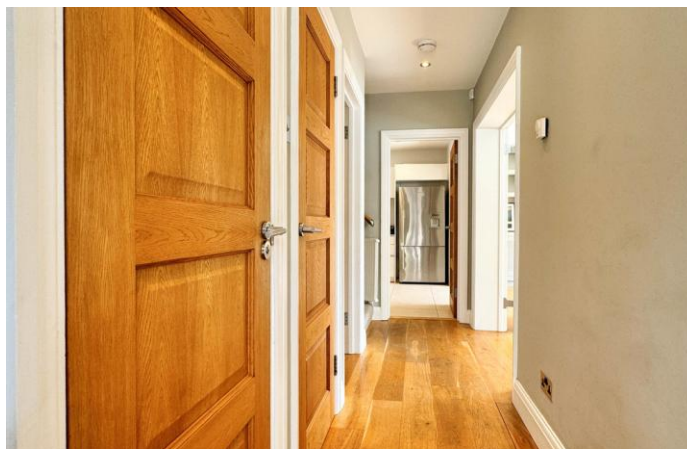
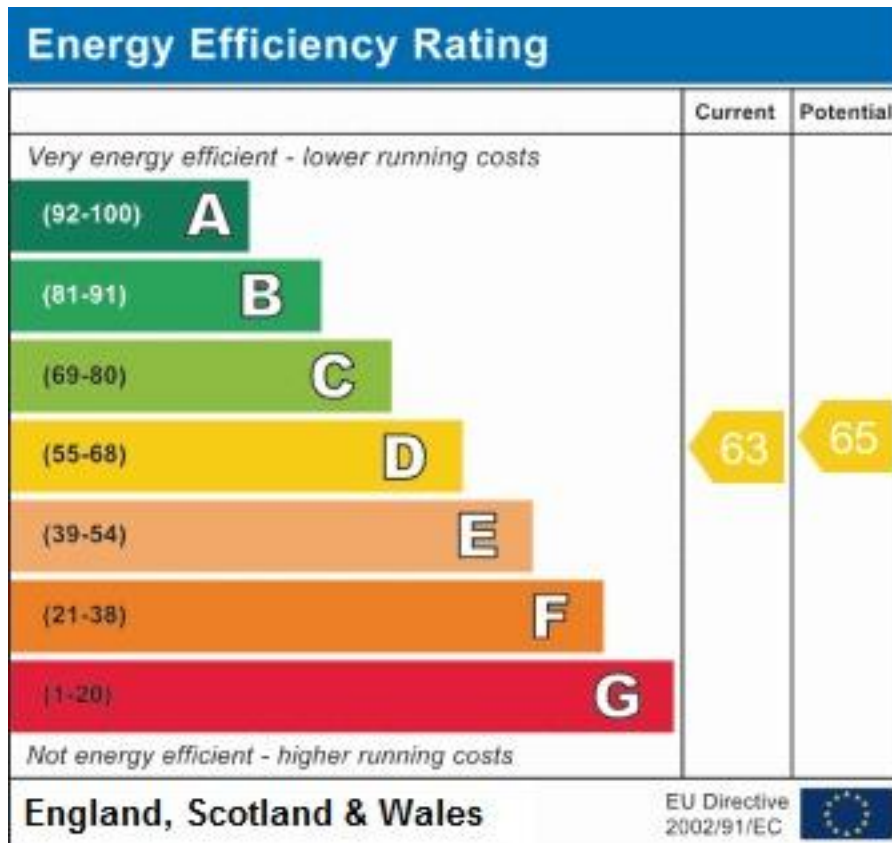




Steven Oates are pleased to offer this stunning four bedroom semi-detached family home, situated in an exclusive development just outside of Hertford Town Centre. Accommodation comprises of large family kitchen, utility room, lounge with bi-fold doors onto garden, second reception room, downstairs WC, master bedroom with en-suite, three double bedrooms and family bathroom. Externally the property benefits from large private driveway, detached double car port and large landscaped gardens. Available 19th November and is offered on an unfurnished basis.









Whilst we endeavour to make our sales particulars fair, accurate and reliable, they are only intended as a general guide to the property. Measurements and distances are approximate. These particulars do not form part of any offer or contract. If there are important matters that are likely to affect your decision to buy, please contact us before viewing the property. Please note that we have not tested the services, equipment or appliances in this property, accordingly, we advise prospective buyers to commission their own survey or service reports before finalising any offer to purchase.