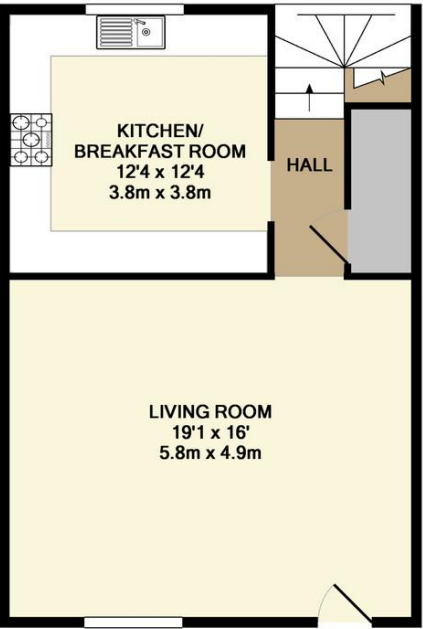


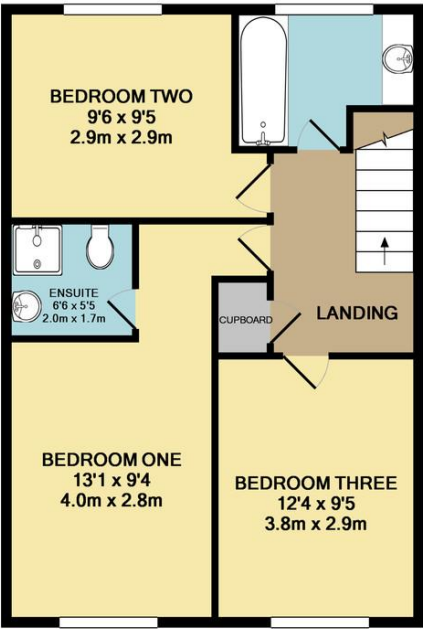


A rare opportunity to let this three bedroom character conversion situated within this 'Civic Award' winning mews development in a historic part of Hertford, conveniently located within walking distance of the town centre and both train stations serving London. The property benefits from a large living room, kitchen/breakfast room, bathroom & en-suite, whilst externally there is an allocated parking space (for a small vehicle). Available 7th July 2025. Unfurnished.





GROUND FLOOR



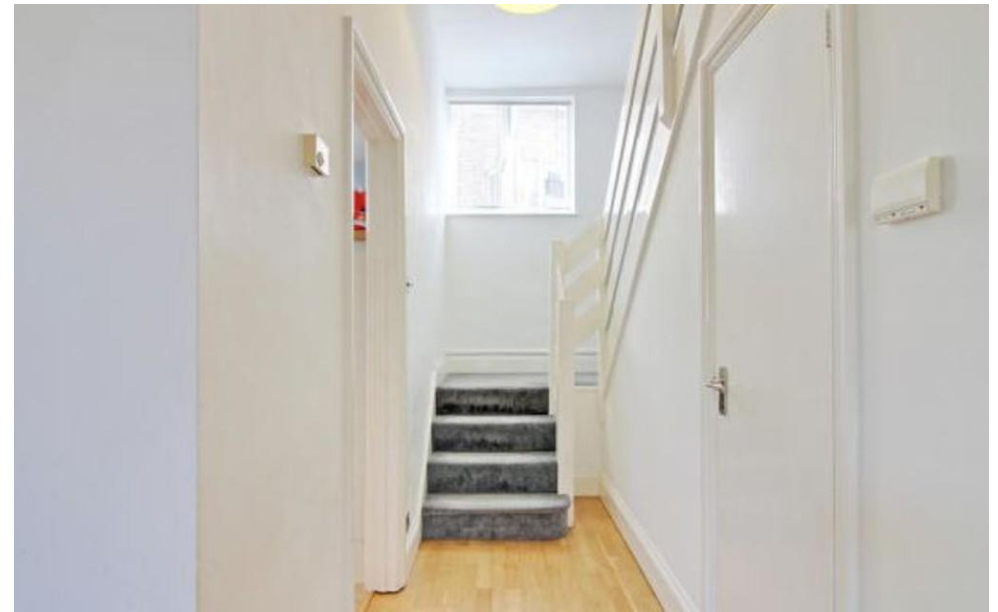
1ST FLOOR

TOTAL APPROX. FLOOR AREA 1092 SQ.FT. (101.4 SQ.M.)

Whilst every attempt has been made to ensure the accuracy of the floor plan contained here, measurements of doors, windows, rooms and any other items are approximate and no responsibility is taken for any error, omission, or mis-statement. This plan is for illustrative purposes only and should be used as such by any prospective purchaser. The services, systems and appliances shown have not been tested and no guarantee as to their operability or efficiency can be given
Made with Metropix ©2017

Score	Energy rating	Current	Potential
92+	A	57 D	85 B
81-91	B		
69-80	C		
55-68	D		
39-54	E		
21-38	F		
1-20	G		





Whilst we endeavour to make our sales particulars fair, accurate and reliable, they are only intended as a general guide to the property. Measurements and distances are approximate. These particulars do not form part of any offer or contract. If there are important matters that are likely to affect your decision to buy, please contact us before viewing the property. Please note that we have not tested the services, equipment or appliances in this property, accordingly, we advise prospective buyers to commission their own survey or service reports before finalising any offer to purchase.