



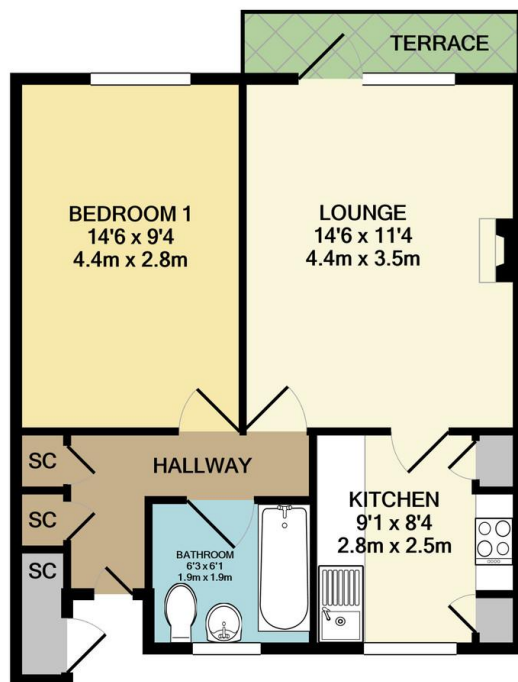
Steven Oates are delighted to offer for rental this well presented one bedroom ground floor flat within easy access to local amenities and Hertford North Station.

The property offers good sized accommodation throughout to include lounge with access to communal gardens, fully fitted kitchen with appliances to remain, double bedroom and bathroom.

The property has been recently redecorated and offers additional external storage and communal parking.

The property will be offered unfurnished and available 20 June 2025.





Score	Energy rating	Current	Potential
92+	A		
81-91	B		
69-80	C		77 C
55-68	D	60 D	
39-54	E		
21-38	F		
1-20	G		

Whilst every attempt has been made to ensure the accuracy of the floor plan contained here, measurements of doors, windows, rooms and any other items are approximate and no responsibility is taken for any error, omission, or mis-statement. This plan is for illustrative purposes only and should be used as such by any prospective purchaser. The services, systems and appliances shown have not been tested and no guarantee as to their operability or efficiency can be given
Made with Metropix ©2021





Whilst we endeavour to make our sales particulars fair, accurate and reliable, they are only intended as a general guide to the property. Measurements and distances are approximate. These particulars do not form part of any offer or contract. If there are important matters that are likely to affect your decision to buy, please contact us before viewing the property. Please note that we have not tested the services, equipment or appliances in this property, accordingly, we advise prospective buyers to commission their own survey or service reports before finalising any offer to purchase.