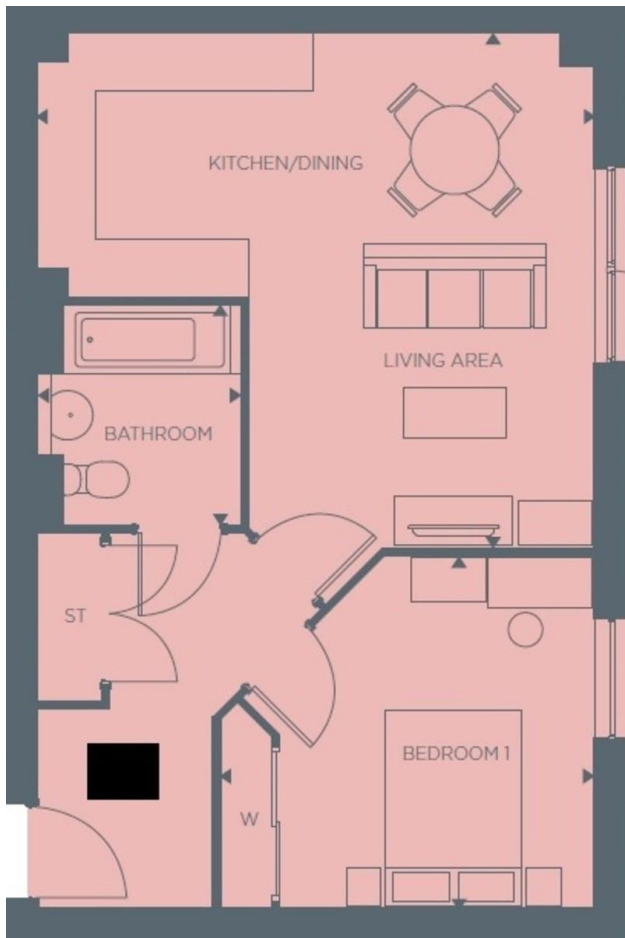




A one double bedroom top floor apartment offering stylish and modern living within a desirable development adjacent to Hertford East station and the town centre. The property benefits from large double bedroom, good sized open plan kitchen / lounge, family bathroom, secure gated parking and access to large communal podium. Available early June, the property is offered unfurnished.





Score	Energy rating	Current	Potential
92+	A		
81-91	B	81 B	81 B
69-80	C		
55-68	D		
39-54	E		
21-38	F		
1-20	G		





Whilst we endeavour to make our sales particulars fair, accurate and reliable, they are only intended as a general guide to the property. Measurements and distances are approximate. These particulars do not form part of any offer or contract. If there are important matters that are likely to affect your decision to buy, please contact us before viewing the property. Please note that we have not tested the services, equipment or appliances in this property, accordingly, we advise prospective buyers to commission their own survey or service reports before finalising any offer to purchase.