

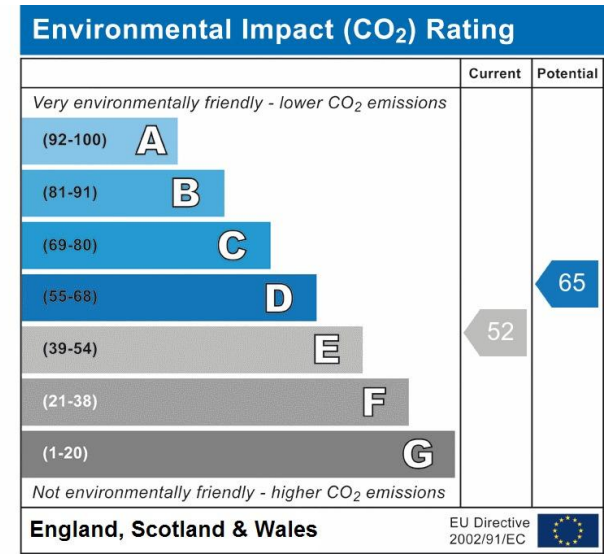
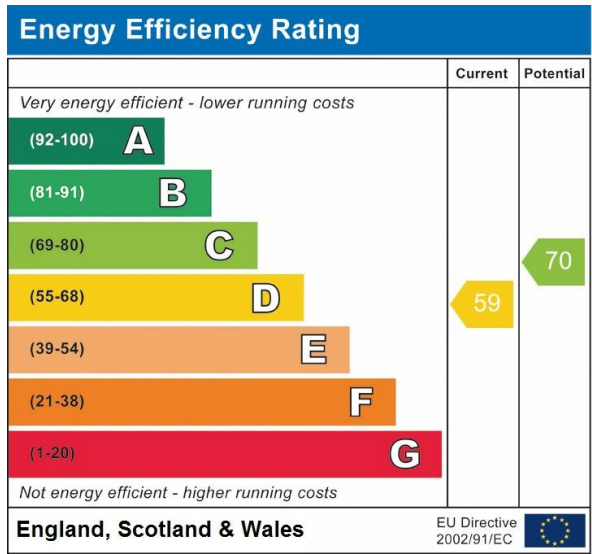


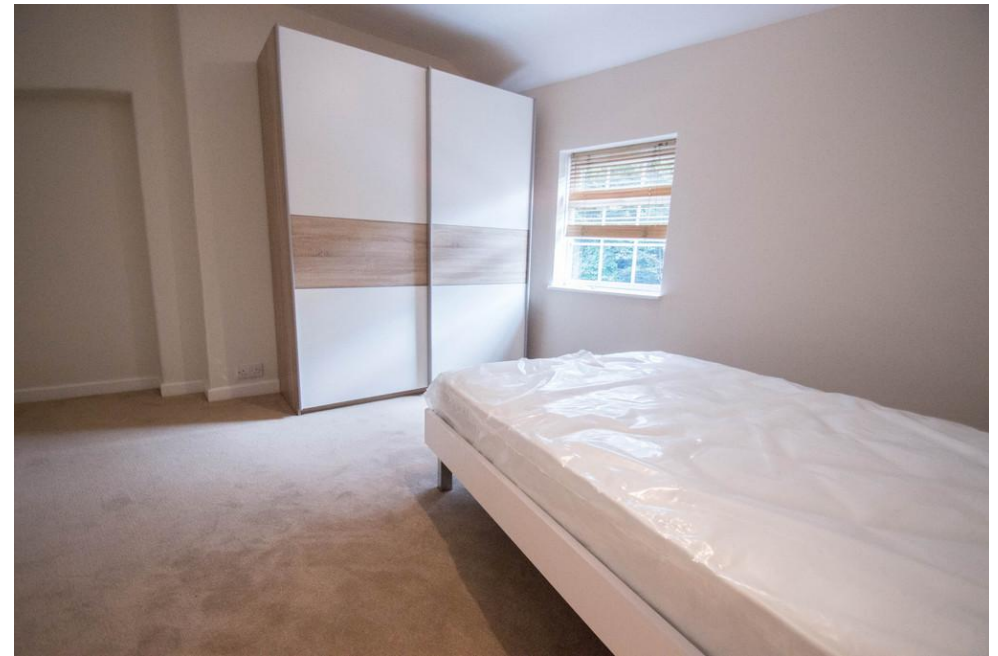
 Steven Oates

Hertingfordbury Road, Hertford
£1,250 pcm

A modern two bedroom Victorian mid terrace house located a short walk from Hertford Town. The property features one double and one single bedroom, living room, modern kitchen, downstairs bathroom and courtyard garden. Available mid-August and part furnished. Unfortunately, not suitable for sharers.







Whilst we endeavour to make our sales particulars fair, accurate and reliable, they are only intended as a general guide to the property. Measurements and distances are approximate. These particulars do not form part of any offer or contract. If there are important matters that are likely to affect your decision to buy, please contact us before viewing the property. Please note that we have not tested the services, equipment or appliances in this property, accordingly, we advise prospective buyers to commission their own survey or service reports before finalising any offer to purchase.