



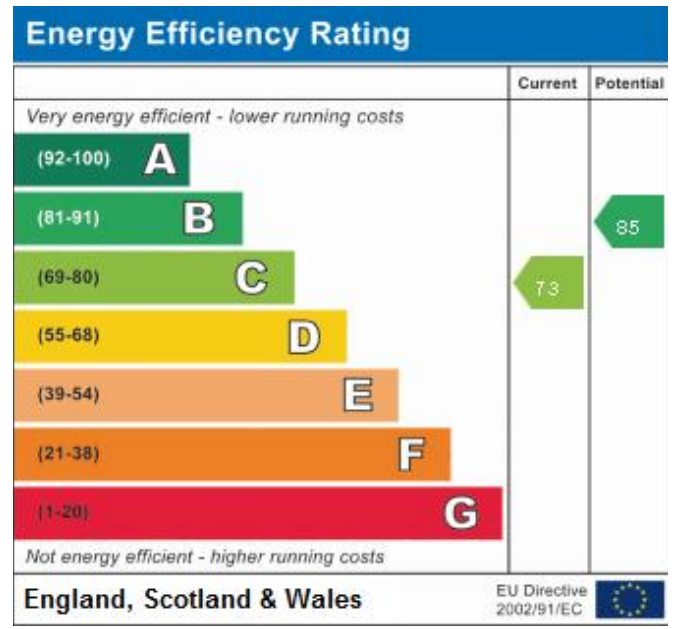
 Steven Oates

The Cottage Lodge Farm, Hertford
£2,500 pcm

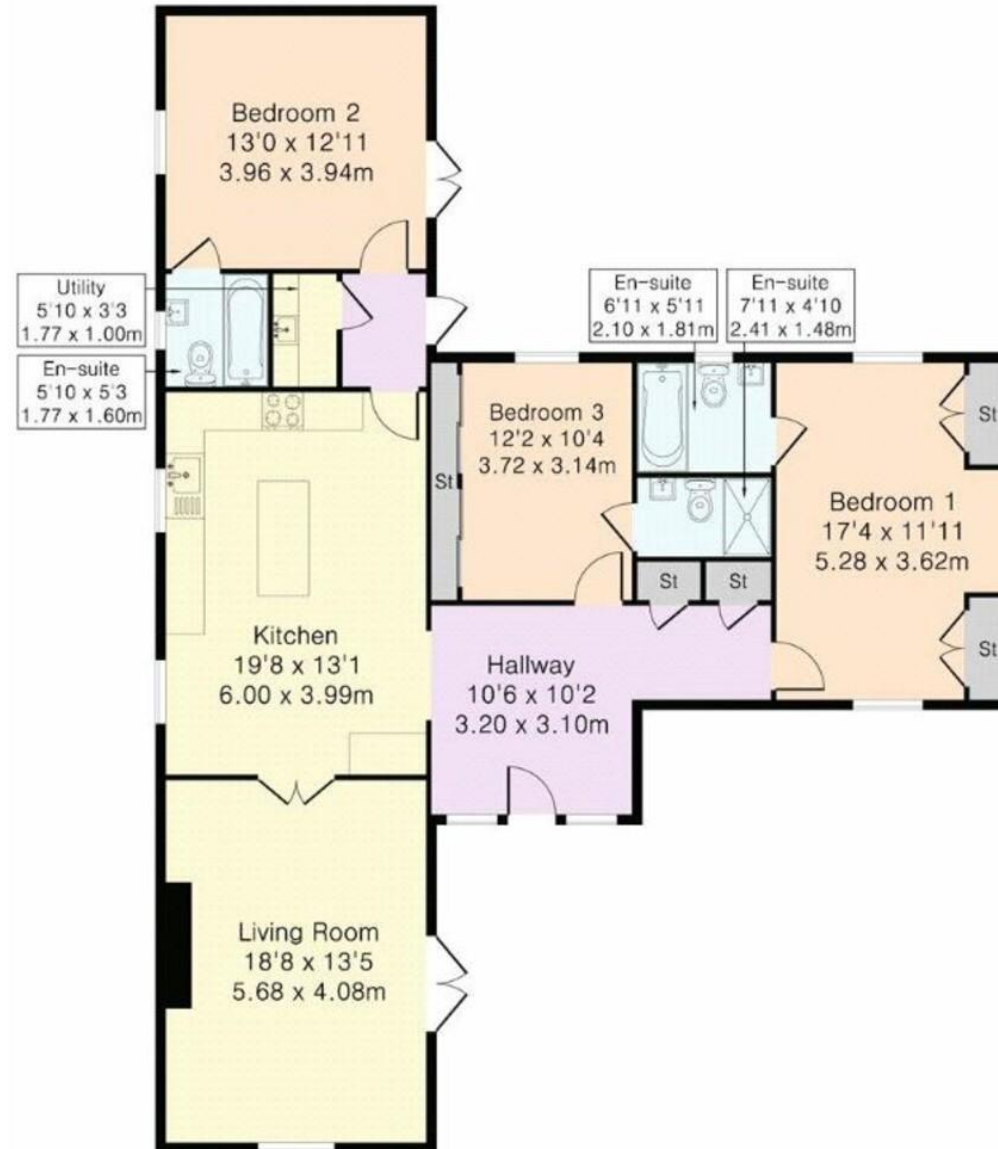
Lodge Farm Cottage is approached via a private gated driveway providing ample off street parking for numerous vehicles. The cottage is approached via a light and airy vaulted entrance hallway, giving access to the kitchen/dining room, which in turn leads onto the spectacular double vaulted living room, allowing an abundance of natural light with a feature brick fireplace, log burner and with double doors to the courtyard at the front. The hallway also gives access to the double aspect principal bedroom and bedroom three, both of which have en suite bathrooms. Just off the kitchen there is second hallway with doors to the rear garden, this hallway gives access to the utility room, a double aspect bedroom with en suite bathroom and double doors to the garden. To the rear of the home is a private garden. Available now, unfurnished.







Approximate Gross Internal Area 1355 sq ft – 126 sq m



Whilst we endeavour to make our sales particulars fair, accurate and reliable, they are only intended as a general guide to the property. Measurements and distances are approximate. These particulars do not form part of any offer or contract. If there are important matters that are likely to affect your decision to buy, please contact us before viewing the property. Please note that we have not tested the services, equipment or appliances in this property, accordingly, we advise prospective buyers to commission their own survey or service reports before finalising any offer to purchase.