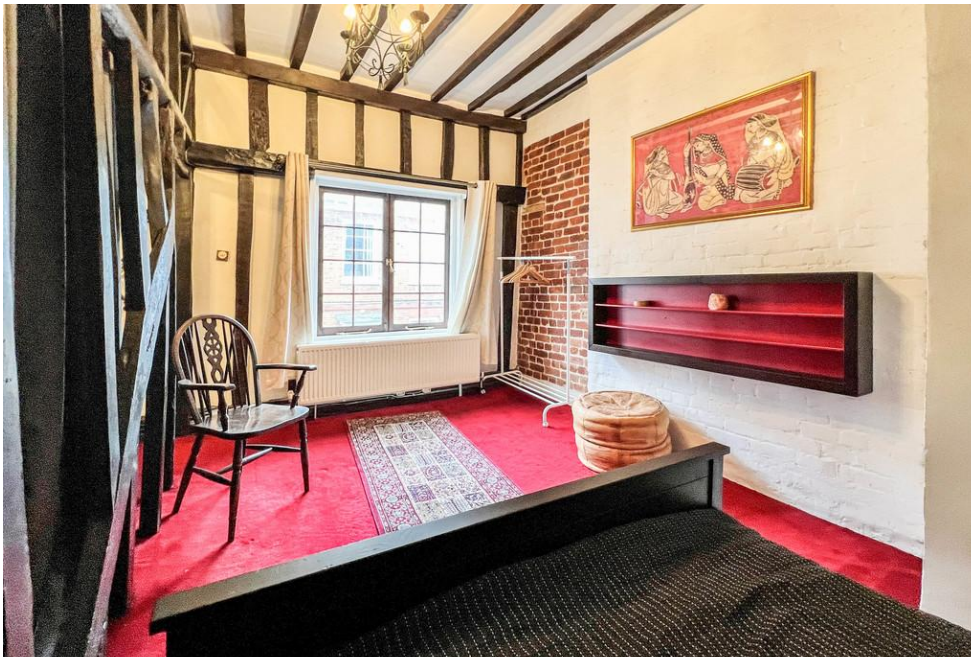




A Grade II listed and highly individual character home with origins tracing back to the 1600's and situated within one of the most characterful streets in Hertford. Convenient for all facilities to include town centre, rail and leisure and offering accommodation arranged over a total of three levels with an abundance of exposed beams and natural brickwork to include a 15'9 x 12'5 large kitchen/diner, downstairs bathroom, living room with wood burning stove and vaulted ceiling and two double bedrooms. The property will interest anyone looking for something quirky, characterful and different. Available now furnished/unfurnished.







Whilst we endeavour to make our sales particulars fair, accurate and reliable, they are only intended as a general guide to the property. Measurements and distances are approximate. These particulars do not form part of any offer or contract. If there are important matters that are likely to affect your decision to buy, please contact us before viewing the property. Please note that we have not tested the services, equipment or appliances in this property, accordingly, we advise prospective buyers to commission their own survey or service reports before finalising any offer to purchase.