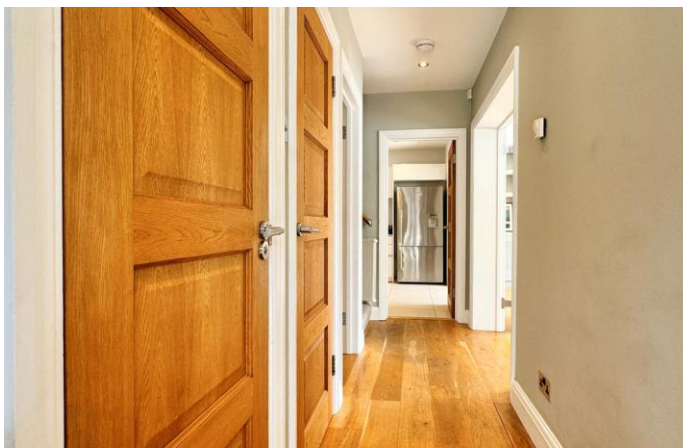




 Steven Oates

Broad oak End, Hertford
£3,500 pcm

Steven Oates are pleased to offer this stunning four bedroom semi-detached family home, situated in an exclusive development just outside of Hertford Town Centre. Accommodation comprises of large family kitchen, utility room, lounge with bi-fold doors onto garden, second reception room, downstairs WC, master bedroom with en-suite, three double bedrooms and family bathroom. Externally the property benefits from large private driveway, detached double car port and large landscaped gardens. Available mid-September and is offered on



Steven Oates are pleased to offer this stunning four bedroom semi-detached family home, situated in an exclusive development just outside of Hertford Town Centre. Accommodation comprises of large family kitchen, utility room, lounge with bi-fold doors onto garden, second reception room, downstairs WC, master bedroom with en-suite, three double bedrooms and family bathroom. Externally the property benefits from large private driveway, detached double car port and large landscaped gardens. Available 5th June 2020. The property is offered on an unfurnished basis.

ENTRANCE HALL 16' 01" x 3' 04" (4.9m x 1.02m)

LOUNGE 12' 05 MAX" x 24' 10 MAX" (3.78m x 7.57m)

KITCHEN 18' 08" x 10' 05" (5.69m x 3.18m)

RECEPTION ROOM 12' 01" x 11' 02" (3.68m x 3.4m)

UTILITY ROOM 6' 01" x 6' 07" (1.85m x 2.01m)

DOWNSTAIRS WC

MASTER BEDROOM 11' 11" x 13' 06" (3.63m x 4.11m)

ENSUITE

BEDROOM TWO 10' 11" x 9' 01" (3.33m x 2.77m)

BEDROOM THREE 8' 05" x 9' 09" (2.57m x 2.97m)

BEDROOM FOUR 8' 09" x 7' 09" (2.67m x 2.36m)

BATHROOM

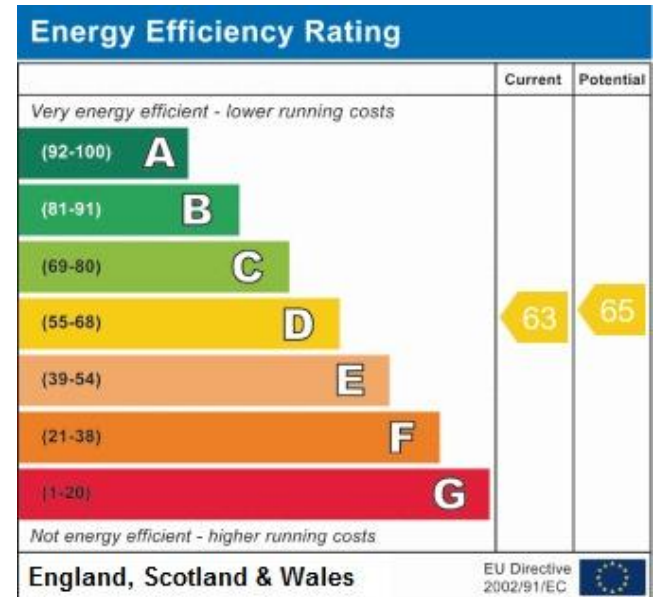
EXTERNALLY THE PROPERTY BENEFITS FROM

DOUBLE CAR PORT

LARGE PRIVATE DRIVEWAY

LARGE LANDSCAPED GARDEN

PATIO AREA







Whilst we endeavour to make our sales particulars fair, accurate and reliable, they are only intended as a general guide to the property. Measurements and distances are approximate. These particulars do not form part of any offer or contract. If there are important matters that are likely to affect your decision to buy, please contact us before viewing the property. Please note that we have not tested the services, equipment or appliances in this property, accordingly, we advise prospective buyers to commission their own survey or service reports before finalising any offer to purchase.