



17 Ringwold Close

Beckenham, BR3 1TZ

Asking Price £220,000

Welcome to this charming one-bedroom flat located on Ringwold Close in Beckenham, BR3. This delightful property, built in the 1970s, offers a comfortable living space of 494 square feet and is perfect for those seeking a convenient and low-maintenance lifestyle.

As you enter through your own front door, you are welcomed by an entrance hallway that sets the tone for the practical layout of the flat and also benefits from three large storage cupboards. The reception room is a lovely space for relaxation or entertaining guests, while the separate kitchen provides functionality for all your culinary needs. The bedroom is well-proportioned, offering a peaceful retreat at the end of the day, and the bathroom is conveniently located nearby.

One of the standout features of this property is that it is sold chain-free, making the buying process smoother and more straightforward. Additionally, residents will benefit from access to a communal car park, providing ease of parking in this desirable area.

Situated within walking distance of Kent House station, this flat is ideal for commuters, offering excellent transport links to central London and beyond. The surrounding area boasts a variety of local amenities, including shops, cafes, and parks, ensuring that everything you need is within easy reach.

This first-floor flat presents an excellent opportunity for first-time buyers or investors looking to add to their portfolio. With its practical layout, convenient location, and chain-free status, this property is not to be missed. We invite you to arrange a viewing and discover the potential of this lovely home for yourself.

Viewing

Please contact our Galloways Penge Office on 020 8778 1120 if you wish to arrange a viewing appointment for this property or require further information.

- ONE BEDROOM FLAT
- PURPOSE BUILT
- FIRST FLOOR
- CHAIN FREE
- OWN FRONT DOOR
- SEPERATE KITCHEN
- FOUR BUILT-IN STORAGE CUPBOARDS
- COMMUNAL CAR PARK
- 4 MINUTE WALK TO KENT HOUSE STATION
- (ALL WALKING DISTANCES ARE ESTIMATED VIA GOOGLE MAPS)



1



1

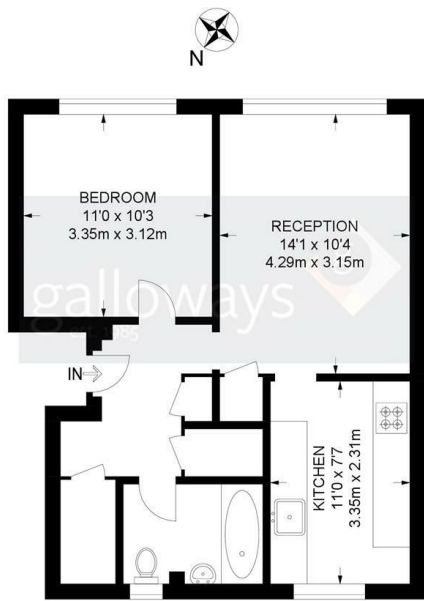


1



Floor Plan

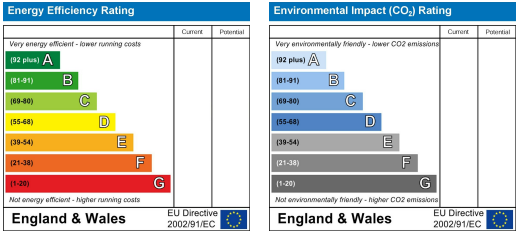
Ringwold Close, BR3
1 Bedroom Flat
APPROXIMATE GROSS INTERNAL AREA: 494 SQ FT / 45.9 SQ M



Area Map



Energy Efficiency Graph



These particulars, whilst believed to be accurate are set out as a general outline only for guidance and do not constitute any part of an offer or contract. Intending purchasers should not rely on them as statements of representation of fact, but must satisfy themselves by inspection or otherwise as to their accuracy. No person in this firms employment has the authority to make or give any representation or warranty in respect of the property.