



30 Selby Road

London, SE20 8SL

Asking Price £675,000

Galloways are delighted to present this extended four-bedroom terraced house, set in a quiet residential pocket of Anerley and offered to the market in good overall condition. The property has been thoughtfully adapted for wheelchair users, featuring an internal lift providing easy access between the ground and first floors, as well as a level-access shower room.

Internally, the house offers versatile and spacious accommodation arranged over three floors. The ground floor includes a large kitchen/dining room, generous reception room, and a useful snug/home office with direct access to a private garden. Upstairs, there are four well-proportioned bedrooms and two modern bathrooms, making this an ideal home for growing families or those in need of accessible living.

The property is ideally positioned for Birkbeck Station (serving Southern Rail into London Bridge) and Tramlank services offering fast connections to Beckenham, East Croydon, and Wimbledon. A range of bus routes also serve the area, linking into Penge, Crystal Palace, and Bromley. Local amenities include supermarkets, schools, green spaces, cafés, and Crystal Palace Park.

This is a rare opportunity to purchase a wheelchair-adapted home in a well-connected part of SE20. Early viewing is highly recommended.

Viewing

Please contact our Galloways Penge Office on 020 8778 1120 if you wish to arrange a viewing appointment for this property or require further information.

- FOUR BEDROOMS
- INTERNAL LIFT FOR WHEELCHAIRS USERS
- SPACIOUS KITCHEN/DINING AREA
- BRIGHT AND AIRY ACCOMMODATION
- SNUG/HOME OFFICE
- SECURE GATED FRONT ENTRANCE
- OFF STREET PARKING
- DOUBLE GLAZED WINDOWS
- CENTRAL HEATING
- FREEHOLD



4



2

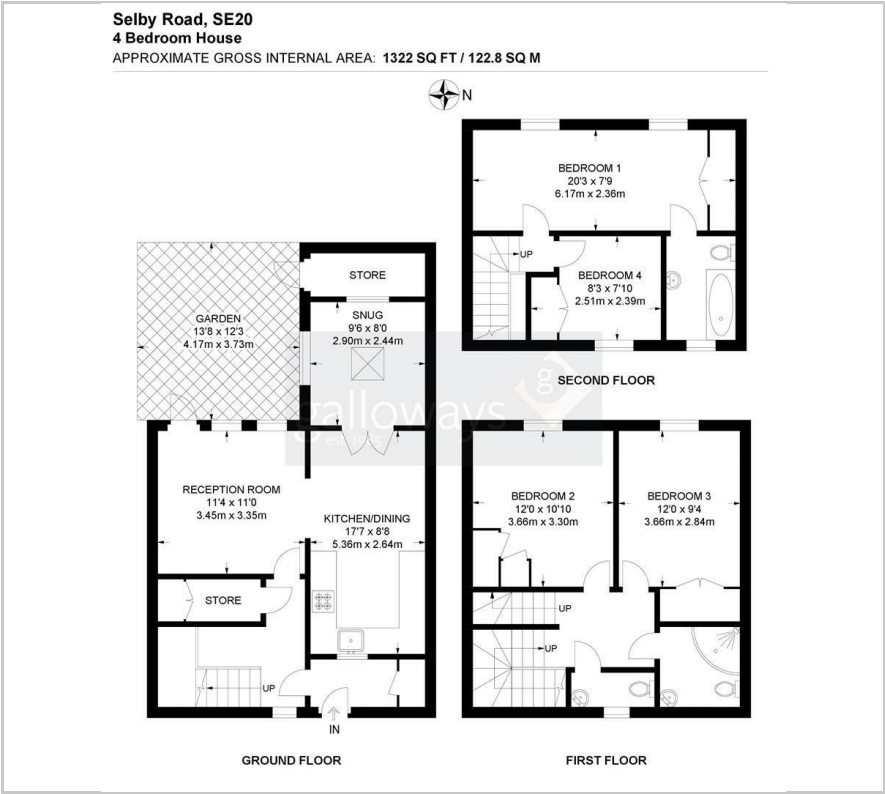


2



C

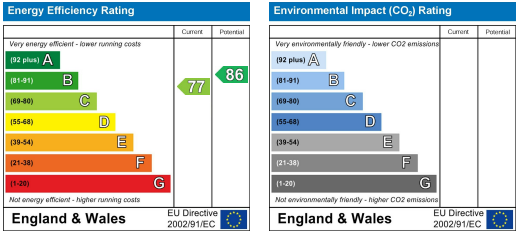
Floor Plan



Area Map



Energy Efficiency Graph



These particulars, whilst believed to be accurate are set out as a general outline only for guidance and do not constitute any part of an offer or contract. Intending purchasers should not rely on them as statements of representation of fact, but must satisfy themselves by inspection or otherwise as to their accuracy. No person in this firms employment has the authority to make or give any representation or warranty in respect of the property.