



80 Chesham Road

London, SE20 7RP

Asking Price £650,000

Nestled on the charming Chesham Road in Penge, London, this delightful mid-terrace house offers a perfect blend of comfort and convenience for family living. Spanning an impressive 1,552 square feet, the property boasts four spacious bedrooms, making it an ideal choice for families seeking room to grow.

The house features two inviting reception rooms, providing ample space for relaxation and entertaining guests. The well-appointed kitchen and dining area are perfect for family meals and gatherings. With two bathrooms, morning routines will be a breeze for everyone in the household.

A notable highlight of this property is the loft extension, which adds valuable living space and versatility. The large rear garden is a true gem, offering a private outdoor sanctuary for children to play, gardening enthusiasts to flourish, or simply for enjoying sunny afternoons with family and friends.

Parking is made easy with a driveway that accommodates two vehicles, a rare find in this bustling area. The property is situated within walking distance of excellent schools, making it a prime location for families prioritising education.

Built between 1930 and 1939, this home retains a sense of character while providing modern comforts. Whether you are looking for a family home or a property with potential for future growth, this house on Chesham Road is a wonderful opportunity not to be missed.

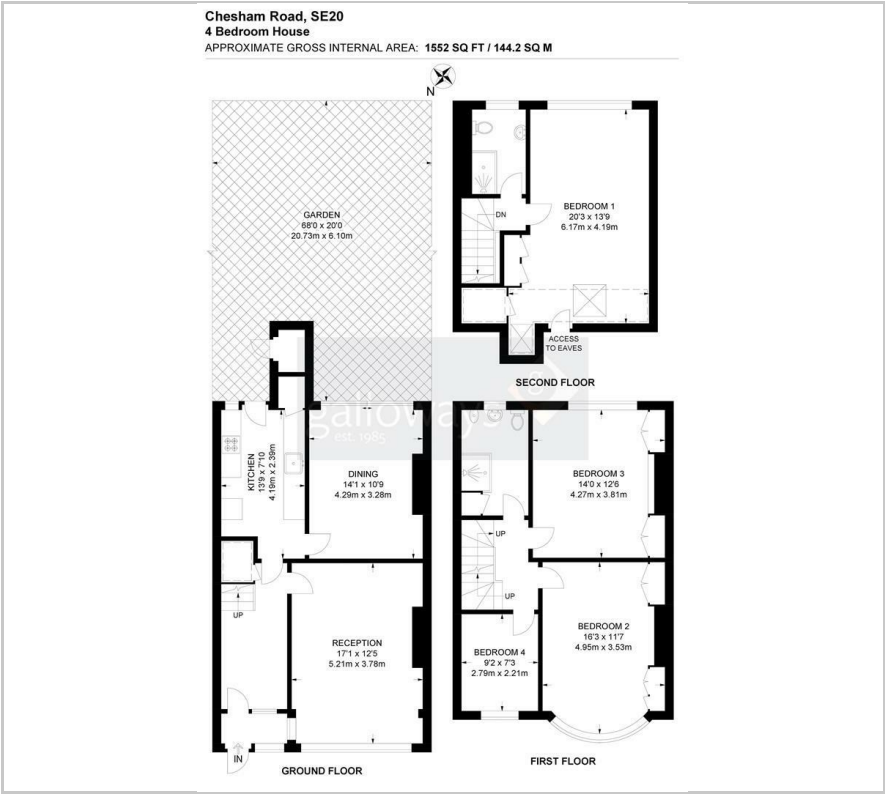
Viewing

Please contact our Galloways Penge Office on 020 8778 1120 if you wish to arrange a viewing appointment for this property or require further information.

- MID TERRACE HOUSE
- FOUR BEDROOM
- LOFT EXTENSION
- OFF STREET PARKING
- LARGE REAR GARDEN
- CHAIN FREE
- TWO BATHROOMS
- BROMLEY COUNCIL (TAX BAND D)
- 10 MINUTE WALK TO KENT HOUSE STATION
- (ALL WALKING TIMES ARE ESTIMATED VIA GOOGLE MAPS)



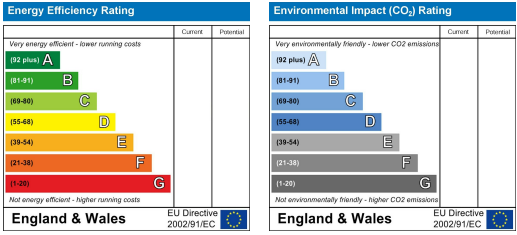
Floor Plan



Area Map



Energy Efficiency Graph



These particulars, whilst believed to be accurate are set out as a general outline only for guidance and do not constitute any part of an offer or contract. Intending purchasers should not rely on them as statements of representation of fact, but must satisfy themselves by inspection or otherwise as to their accuracy. No person in this firms employment has the authority to make or give any representation or warranty in respect of the property.