



24a Parish Lane

London, SE20 7LH

Offers In Excess Of £340,000

Welcome to this charming ground floor flat located on Parish Lane in London. This Victorian conversion property, built in the early 1900s, boasts character and history that is sure to captivate you.

As you step into this delightful flat, you are greeted by a reception room that offers a cosy space to relax and entertain. The modern kitchen is perfect for whipping up your favourite meals, adding a touch of contemporary convenience to the traditional charm of the property.

The bedroom features large bay windows that flood the room with natural light, creating a bright and airy atmosphere. Imagine waking up to the gentle sunlight streaming in through those beautiful windows each morning.

This flat also comes with the added bonus of a sole use garden, providing you with your own private outdoor sanctuary in the heart of the city. Whether you have a green thumb or simply enjoy al fresco dining, this garden offers a tranquil escape from the hustle and bustle of London life.

Tenure: Leasehold
Lease Length: 90 Years
Service Charge: £0
Ground Rent: £200 pa
Bromley Council Tax: Band B - £1,516

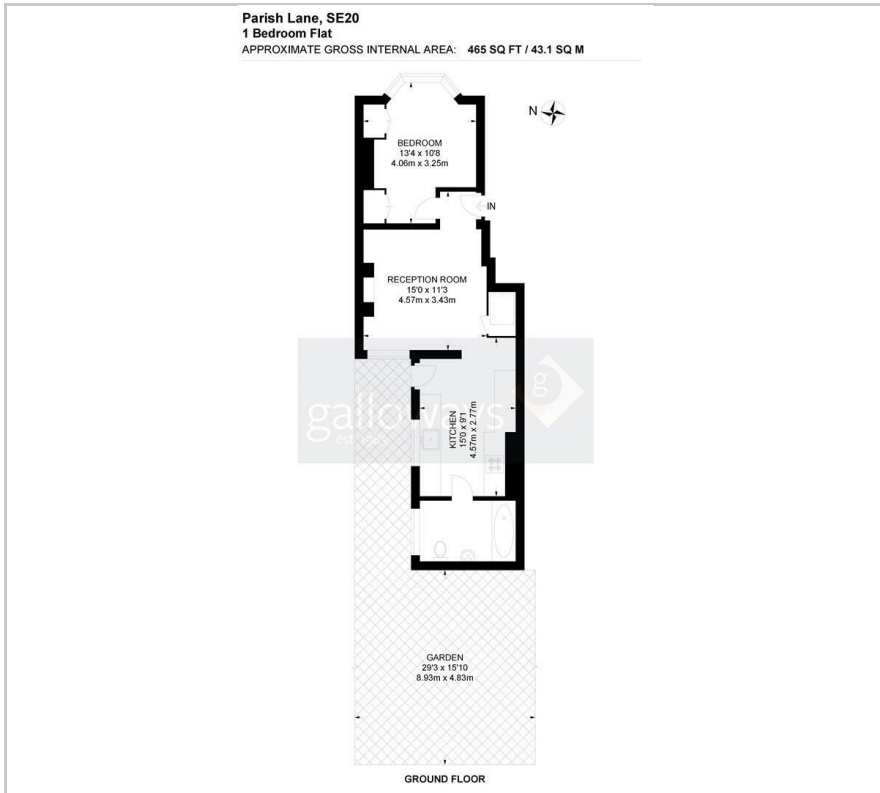
Viewing

Please contact our Galloways Penge Office on 020 8778 1120 if you wish to arrange a viewing appointment for this property or require further information.

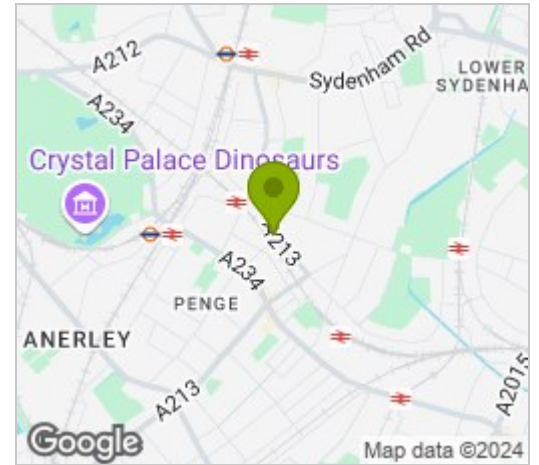
- ONE DOUBLE BEDROOM FLAT
- GROUND FLOOR
- VICTORIAN CONVERSION
- SOLE USE GARDEN
- MODERN BATHROOM
- MODERN KITCHEN
- CHAIN FREE
- 3 MINUTE WALK TO PENGE EAST STATION
- 13 MINUTE WALK TO PENGE WEST STATION
- (ALL WALKING DISTANCES ARE ESTIMATED VIA GOOGLE MAPS)



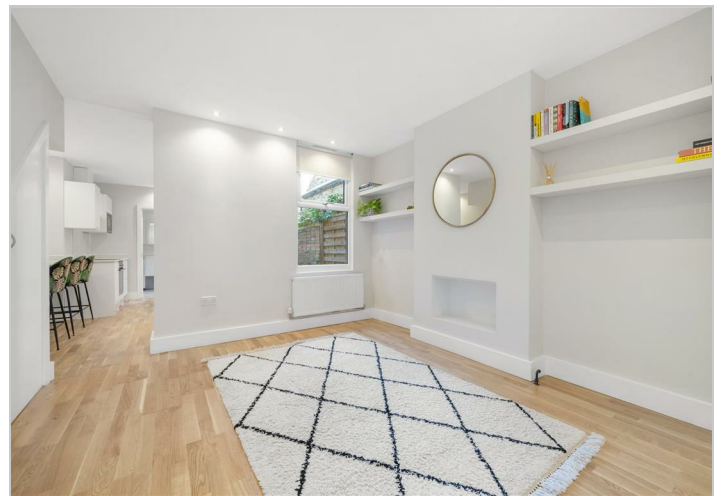
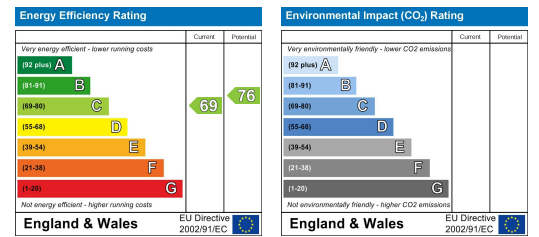
Floor Plan



Area Map



Energy Efficiency Graph



These particulars, whilst believed to be accurate are set out as a general outline only for guidance and do not constitute any part of an offer or contract. Intending purchasers should not rely on them as statements of representation of fact, but must satisfy themselves by inspection or otherwise as to their accuracy. No person in this firm's employment has the authority to make or give any representation or warranty in respect of the property.