



24 Green Lane

London, SE20 7JX

Asking Price £525,000

Welcome to this charming end terrace house located on Green Lane in the delightful area of Penge, SE20. This pre-1914 property boasts a spacious open plan living area, perfect for entertaining guests or simply relaxing with your loved ones. With three double bedrooms, there is ample space for a growing family or for those who enjoy having a home office or guest room.

One of the highlights of this property is its South East facing rear garden, ideal for enjoying the morning sun with a cup of tea or hosting summer barbecues with friends and family. The double glazed windows throughout the house not only provide insulation but also ensure a peaceful and quiet environment inside.

Conveniently situated within walking distance to the high street, you'll have easy access to a variety of shops, cafes, and restaurants, making daily errands a breeze. Whether you're looking for a peaceful retreat from the hustle and bustle of the city or a place to call home close to amenities, this property offers the best of both worlds.

Don't miss out on the opportunity to own this lovely home in a sought-after location. Book a viewing today and envision the endless possibilities this property has to offer.

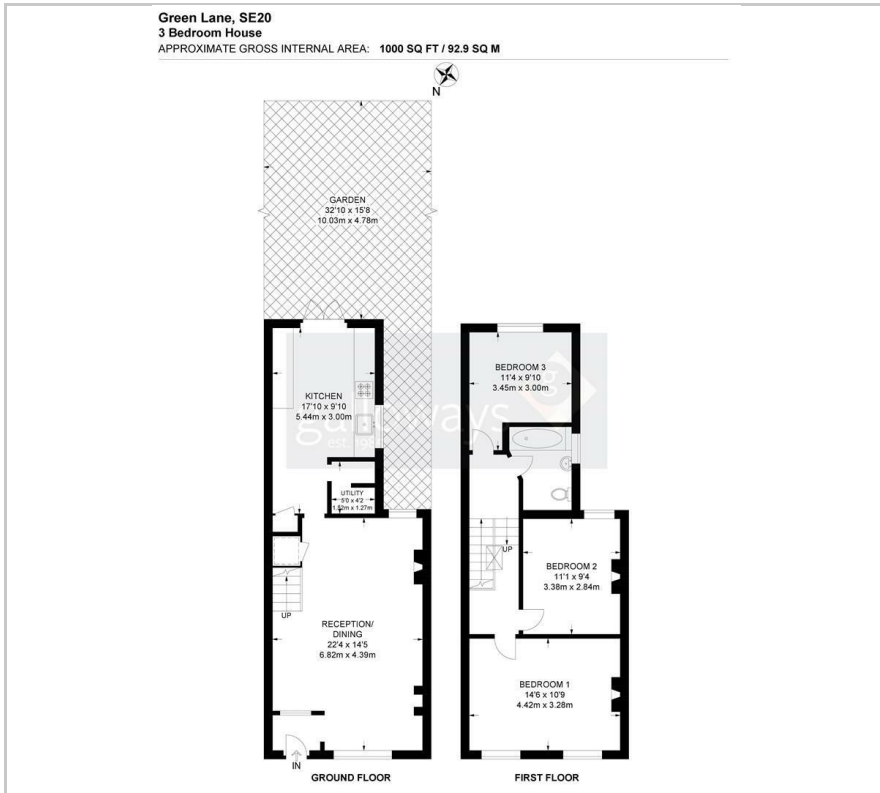
Viewing

Please contact our Galloways Penge Office on 020 8778 1120 if you wish to arrange a viewing appointment for this property or require further information.

- THREE DOUBLE BEDROOM HOUSE
- END OF TERRACE
- SOUTH EAST FACING GARDEN
- DOUBLE GLAZING THROUGHOUT
- LARGE OPEN PLAN LIVING AREA
- UTILITY ROOM
- 6 MINUTE WALK TO ALEXANDRA INFANT SCHOOL
- 9 MINUTE WALK TO PENGE EAST
- 14 MINUTE WALK TO PENGE WEST
- (ALL WALKING DISTANCES ARE ESTIMATED VIA GOOGLE MAPS)



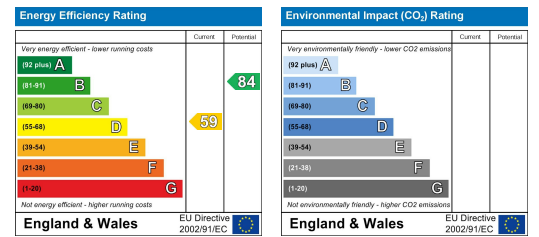
Floor Plan



Area Map



Energy Efficiency Graph



These particulars, whilst believed to be accurate are set out as a general outline only for guidance and do not constitute any part of an offer or contract. Intending purchasers should not rely on them as statements of representation of fact, but must satisfy themselves by inspection or otherwise as to their accuracy. No person in this firm's employment has the authority to make or give any representation or warranty in respect of the property.