



Deverill Court Avenue Road

London, SE20 7SA

Asking Price £215,000

Welcome to this charming 1963-built flat on Avenue Road, London, blending retro charm with modern convenience.

Step into the cozy reception room, flooded with natural light from south-facing windows, perfect for relaxing or entertaining. The property includes a well-appointed bedroom, sleek bathroom, and a modern separate kitchen ideal for cooking.

Enjoy breathtaking views from the roof terrace, perfect for morning coffee or summer barbecues. With lift access for easy moving, this stylish flat is an ideal city pad or investment opportunity.

Tenure: Share of freehold
Lease: 999 years from 1982
Ground rent: £0
Service charge: £3,117.49 p/a

Don't miss out on this 1960s gem. Book a viewing today!

The vendor has provided the above information in good faith. Galloways have not yet had this information verified. Any buyer should seek their own independent legal advice before proceeding.

Viewing

Please contact our Galloways Penge Office on 020 8778 1120 if you wish to arrange a viewing appointment for this property or require further information.

- SHARE OF FREEHOLD
- ROOF TERRACE
- STUNNING VIEWS
- SECURE GATED PARKING
- MODERN KITCHEN
- LIFT ACCESS
- 0.5 MILES TO KENT HOUSE STATION
- 0.6 MILES TO BIRKBECK STATION
- 0.7 MILES TO ANERLEY STATION
- ALL DISTANCES CALCULATED VIA GOOGLMAPS



1



1



1



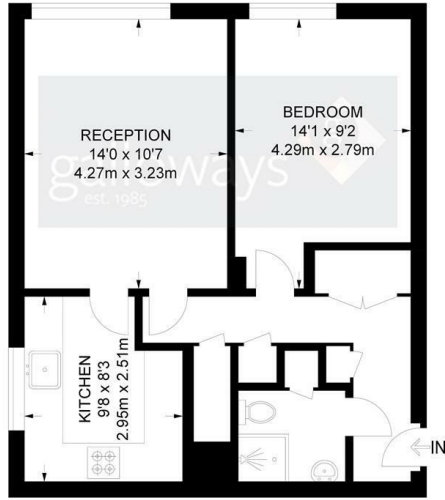
D

Floor Plan

Avenue Road, SE20

1 Bedroom Flat

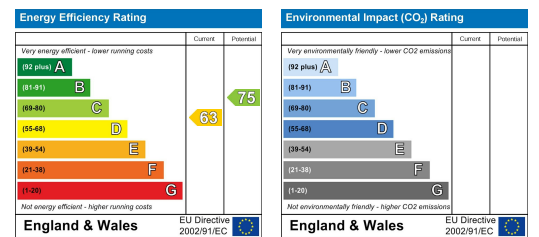
APPROXIMATE GROSS INTERNAL AREA: **487 SQ FT / 45 SQ M**



Area Map



Energy Efficiency Graph



These particulars, whilst believed to be accurate are set out as a general outline only for guidance and do not constitute any part of an offer or contract. Intending purchasers should not rely on them as statements of representation of fact, but must satisfy themselves by inspection or otherwise as to their accuracy. No person in this firm's employment has the authority to make or give any representation or warranty in respect of the property.