



## 9 Keswick House 207A Anerley Road

Anerley, SE20 8ER

**£1,350 PCM**

Welcome to Keswick House in the charming area of Anerley! This delightful flat boasts a modern design within a well-maintained block, offering a perfect blend of comfort and style.

Upon entering, you are greeted by a spacious reception room that seamlessly flows into an open plan kitchen and living area, creating a warm and inviting atmosphere. The property features one bedroom, providing a cosy retreat, and a well-appointed bathroom for your convenience.

Situated in a modern block, Keswick House is flooded with natural light, creating a bright and airy ambiance throughout. Whether you are a first-time buyer, a young professional, or looking for a cozy pied-à-terre, this property offers a fantastic opportunity to create a comfortable and stylish living space.

Don't miss the chance to make Keswick House your new home sweet home in the heart of Anerley. Contact us today to arrange a viewing and experience the charm of this lovely flat for yourself!

Council Tax Band C £1544.00  
Bromley Council

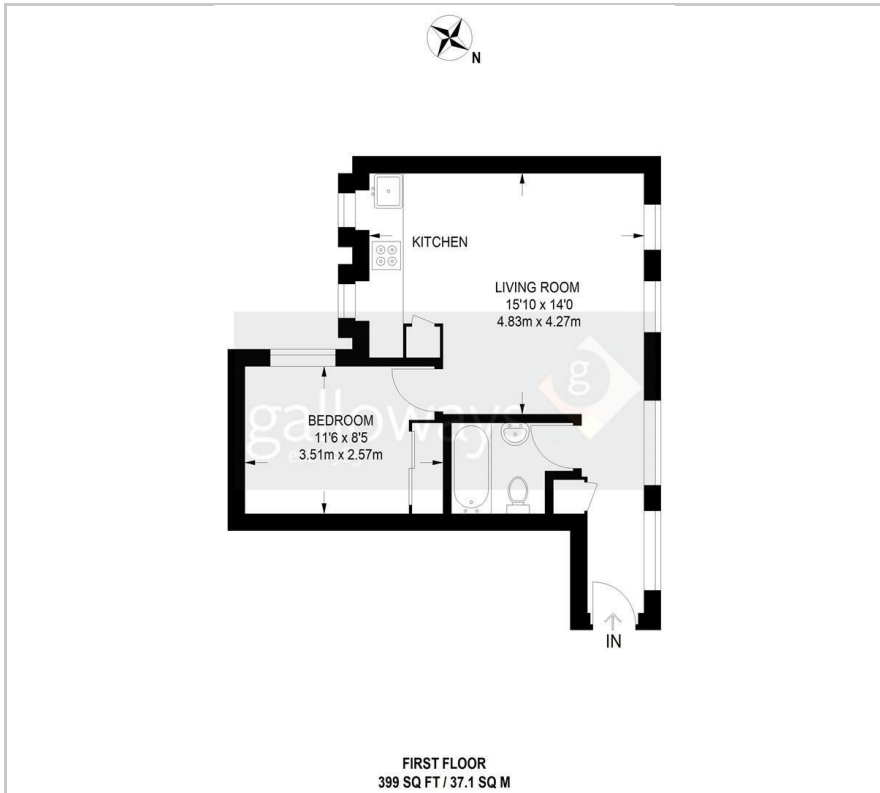
### Viewing

Please contact our Galloways Penge Office on 020 8778 1120 if you wish to arrange a viewing appointment for this property or require further information.

- ONE BEDROOM
- MODERN BLOCK
- FIRST FLOOR
- NEUTRALLY DECORATED
- MODERN BATHROOM
- OPEN PLAN KITCHEN LIVING AREA
- BUILT IN WARDROBES
- 8 MINUTE WALK TO ANERLEY STATION
- 11 MINUTE WALK TO BIRKBECK STATION
- (ALL WALKING TIMES ARE ESTIMATED VIA GOOGLE MAPS)



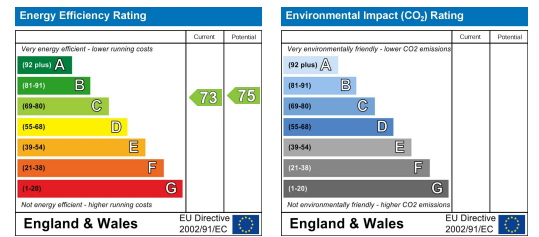
## Floor Plan



## Area Map



## Energy Efficiency Graph



These particulars, whilst believed to be accurate are set out as a general outline only for guidance and do not constitute any part of an offer or contract. Intending purchasers should not rely on them as statements of representation of fact, but must satisfy themselves by inspection or otherwise as to their accuracy. No person in this firm's employment has the authority to make or give any representation or warranty in respect of the property.