



30 Ridgewell Close London, SE26 5AP Asking Price £500,000

A charming property crafted for comfort and style. This delightful three-bedroom house, built in 1996 by esteemed Wimpey Homes builders, offers a contemporary living experience tailored to meet your every need.

Experience modern living with a spacious open-plan layout, perfect for entertaining guests or relaxing with family. The kitchen boasts sleek fixtures and ample storage space, seamlessly flowing into the inviting dining area. A generously sized south-facing rear garden, providing abundant sunshine and a serene atmosphere for outdoor gatherings or peaceful moments of solitude. Enjoy the convenience of two dedicated parking spaces, ensuring hassle-free parking for you and your guests.

Nestled in the heart of Sydenham, this property offers easy access to an array of local amenities and attractions. Immerse yourself in the vibrant community atmosphere and explore the abundance of shops, cafes, and restaurants nearby. Commute with ease thanks to excellent transport links, including nearby train stations and bus routes, connecting you effortlessly to central London and beyond. Whether you're heading to work or exploring the city, getting around has never been more convenient.

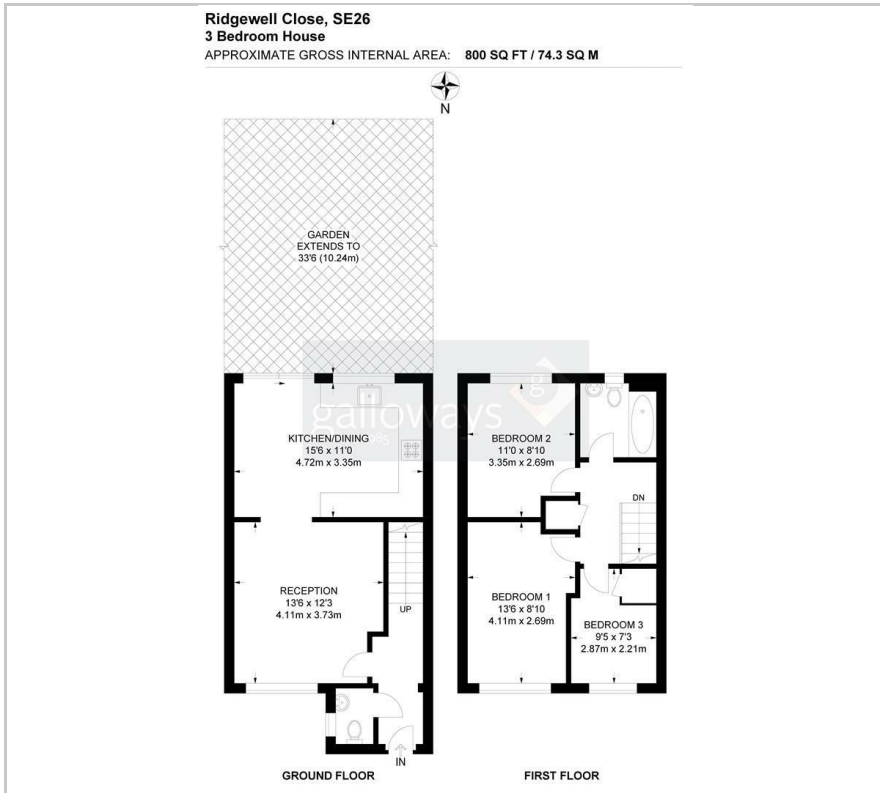
Tenure: Freehold
Lewisham Council Tax band D £2038.00pa

Viewing

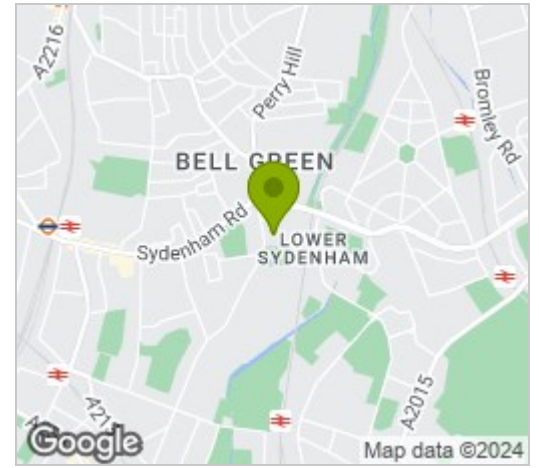
Please contact our Galloways Penge Office on 020 8778 1120 if you wish to arrange a viewing appointment for this property or require further information.

- END OF TERRACE FREEHOLD HOUSE
- THREE BEDROOMS
- BUILT IN 1996 BY WIMPEY HOMES
- TWO ALLOCATED PARKING SPACES
- SOUTH FACING REAR GARDEN
- MODERN OPEN PLAN KITCHEN/DINING ROOM
- 6 MINUTE WALK TO LOWER SYDENHAM STATION
- 7 MINUTE WALK TO HOME PARK
- 6 MINUTE WALK TO SAINSBURYS
- (WALKING TIMES ESTIMATED BY GOOGLE MAPS)

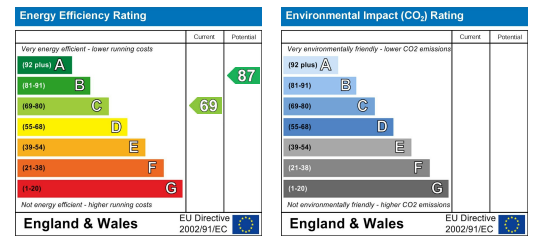
Floor Plan



Area Map



Energy Efficiency Graph



These particulars, whilst believed to be accurate are set out as a general outline only for guidance and do not constitute any part of an offer or contract. Intending purchasers should not rely on them as statements of representation of fact, but must satisfy themselves by inspection or otherwise as to their accuracy. No person in this firm's employment has the authority to make or give any representation or warranty in respect of the property.