



59 Queen Adelaide Road London, SE20 7DX

Asking Price £360,000

A beautifully appointed two double bedroom split-level ex-local authority maisonette. Boasting over 852 sq ft (79.2 sq m) of well-utilised space, this residence is offered to the market in impeccable condition, combining comfort and style effortlessly. The thoughtfully designed layout optimizes every square foot, ensuring each room serves a purpose while maintaining a harmonious flow. This is a home that efficiently accommodates your lifestyle needs.

Large windows invite an abundance of natural light, enhancing the inviting atmosphere within. Bask in the warmth of sunlight as you make the most of your living spaces and your balcony area. Nestled in a well-connected area, Queen Adelaide Road provides easy access to local amenities, transport links, and recreational spaces. The neighborhood boasts a vibrant community with shops, cafes, and parks within walking distance.

Bromley Council Tax Band C £1638.00pa

Tenure: Leasehold

Term: 125 years from 7th April 1986, approx. 87 years remaining on the lease. However, the vendor is willing to offer an extended lease of 125 years upon completion, if a buyer is willing to offer £370,000.

Service Charge: £778.12 per annum

Ground Rent: £10.00pa

The vendor has provided the above information in good faith. Galloways have not yet had this information verified. Any buyer should seek their own independent legal advice before proceeding.

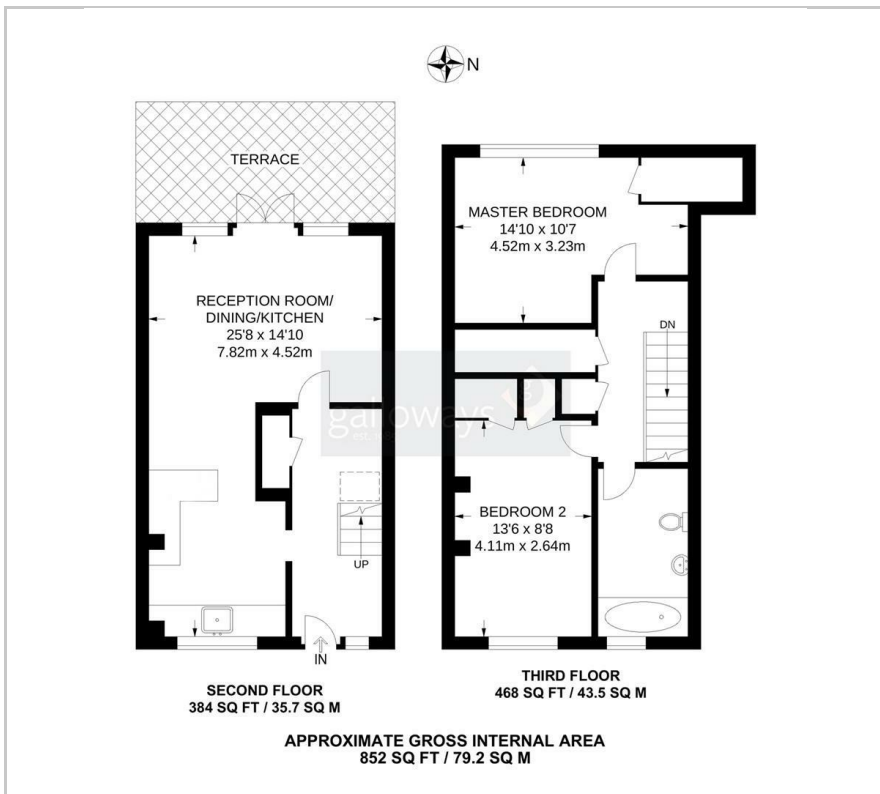
Viewing

Please contact our Galloways Penge Office on 020 8778 1120 if you wish to arrange a viewing appointment for this property or require further information.

- TWO DOUBLE BEDROOMS
- AMPLE STORAGE & OWN FRONT DOOR
- CONTEMPORARY FITTED KITCHEN
- STYLISH BATHROOM SUITE
- BALCONY
- TOTAL SQUARE FOOTAGE 852 sq ft (79.2 sq m)
- 4 MINUTE WALK TO PENGE EAST STATION
- 11 MINUTE WALK TO PENGE WEST STATION
- 11 MINUTE WALK TO CRYSTAL PALACE PARK
- (WALKING TIMES ESTIMATED BY GOOGLE MAPS)



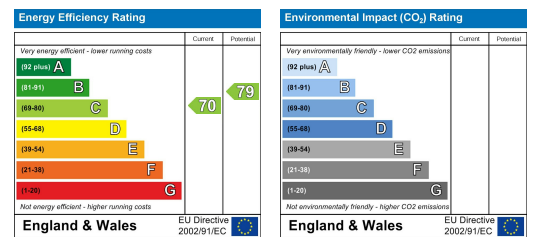
Floor Plan



Area Map



Energy Efficiency Graph



These particulars, whilst believed to be accurate are set out as a general outline only for guidance and do not constitute any part of an offer or contract. Intending purchasers should not rely on them as statements of representation of fact, but must satisfy themselves by inspection or otherwise as to their accuracy. No person in this firm's employment has the authority to make or give any representation or warranty in respect of the property.