



# CROFTS ESTATE AGENTS

PASSIONATE ABOUT PROPERTY

CLEETHORPES  
01472 200666

IMMINGHAM  
01469 564294

LOUTH  
01507 601550

SALES LETTINGS NEW HOME SALES LAND PROPERTY MANAGEMENT AUCTIONS FINANCIAL ADVICE AND MORTGAGES ENERGY PERFORMANCE PROVIDER



Westfields Mill Lane  
South Somercotes  
LN11 7DA

£695,000

This stunning property is part barn conversion, part individually built executive detached residence, set within mature private gardens in a fantastic rural position in the coastal village of South Somercotes. Offered for sale with NO FORWARD CHAIN, the property enjoys stunning open views to all sides, with almost limitless potential for potential purchasers to explore the sheer size and flexibility of living accommodation on offer. The peaceful setting, with no neighbours nearby will also undoubtedly appeal. Internal viewings are essential for this unique property and grounds to be truly appreciated. Briefly comprising of porch, entrance hall, utility room, rear porch, cloakroom, lounge, fitted breakfast kitchen with pantry, dining room, snooker room, sun room, ground floor bathroom, three double bedrooms to the first floor, with en suite shower room and second family bathroom, large double integral garage and two

CLEETHORPES: 62 St Peters Avenue, Cleethorpes, DN35 8HP

IMMINGHAM: 21 Kennedy Way, Immingham, DN40 2AB

LOUTH: 3 Market Place, Louth, LN11 9NR

Email: Cleethorpes:

Email: Immingham :

Email: Louth :

[info@croftsestateagents.co.uk](mailto:info@croftsestateagents.co.uk)

[immingham@croftsestateagents.co.uk](mailto:immingham@croftsestateagents.co.uk)

[louth@croftsestateagents.co.uk](mailto:louth@croftsestateagents.co.uk)

[www.croftsestateagents.co.uk](http://www.croftsestateagents.co.uk)





#### Entrance Porch

6' 1" x 8' 5" (1.859m x 2.576m)

Entrance door opens into porch with double glazed windows to front and rear, solid wood floor, door to side leads into entrance hallway.

#### Entrance Hallway

Double glazed window to front, stairs to first floor landing, solid wood flooring, double built in storage cupboard. Door to side leads into kitchen, double doors to side lead into dining room, door to rear opens into utility room.

#### Kitchen/Breakfast Room

15' 10" x 7' 6" (4.819m x 2.288m)

Double glazed double doors to rear lead to garden. Dual aspect double glazed windows to front and side aspects. Radiator. Extensive range of modern fitted units incorporating 1.5 sink bowl unit and mixer tap, integral oven and microwave, integral dishwasher, induction hob and extractor hood. Tiled ceramic splashbacks. Door to side opens into walk in pantry, with double glazed, shelving and cupboards with tiled flooring and vent.

#### Lounge

18' 0" x 13' 0" (5.49m x 3.968m)

Double glazed window to front, two double glazed window to side, open fireplace with traditional surround, radiator.

#### Utility room

10' 4" x 8' 2" (3.147m x 2.491m)

Double glazed window to rear, heated towel rail, oil boiler, fitted units incorporating sink bowl unit with draining board, plumbing for a washing machine, door to side leads into rear porch.

#### Rear porch

4' 6" x 12' 0" (1.363m x 3.669m)

Door to rear leads to outside, with windows to rear, solid wood flooring, door to side leads to cloakroom.

#### Cloakroom

8' 9" x 4' 2" (2.667m x 1.263m)

Low flush w/c, pedestal wash basin, radiator, tiled walls.

#### Dining room

27' 8" x 11' 5" (8.438m x 3.484m)

Three radiators, double glazed windows to front, rear and side. Door to side leads into snooker room, door to other side leads into rear hallway.

#### Rear hallway

15' 6" x 5' 3" (4.717m x 1.597m)

Modern flooring, radiator, velux window to ceiling. Corridor which provides access to ground floor bathroom and sun room.

**Bathroom 1**

8' 7" x 10' 8" (2.609m x 3.254m)

Double glazed window to rear, bath, low flush w/c, pedestal wash basin, walk-in shower cubicle, heated towel rail, tiled walls.

**Sun room**

34' 9" x 14' 9" (10.58m x 4.50m)

A superb sized room with modern flooring, two radiators, three arched velux windows. Two separate rear entrance doors with side panels and triple panel double glazed window providing stunning views over the gardens.

**Snooker room**

Accessed off the dining room, an equally substantial reception room, the snooker room can obviously be utilised for a whole host of purposes. Having wall lights and two double glazed windows to front, door to side opens into store room

**Store room**

11' 9" x 17' 11" (3.59m x 5.455m)

Radiator, tiled floor, shelving, window to front, door to front leads into double garage.

**Double garage**

Twin roller doors to front, windows to side. Door to rear leads to second store room.

**Store room 2**

13' 6" x 12' 3" (4.113m x 3.736m)

Light, power and wall mounted shelving.

**First Floor Landing**

Double built in storage cupboard. Velux window to front.

**Bedroom 1**

18' 1" x 13' 1" (5.516m x 3.987m)

Dual aspect double glazed windows to rear and side, double built in storage cupboard, radiator, door to side leads into en suite.

**En suite**

6' 6" x 7' 8" (1.98m x 2.325m)

Opaque double glazed window to rear, walk in shower cubicle, pedestal wash hand basin, low flush w/c.

**Bedroom 2**

13' 9" x 9' 11" (4.183m x 3.031m)

Double glazed window to rear, radiator, pedestal wash basin.

**Bedroom 3**

18' 2" x 12' 2" (5.530m x 3.706m)

Dual aspect double glazed windows to rear and side, radiator, pedestal wash basin and built in double wardrobe.

**Bathroom 2**

7' 6" x 7' 10" (2.275m x 2.396m)

Opaque double glazed window to rear, panelled bath, pedestal wash basin and low flush w/c.

**Outside**

Access to the property is via a quiet country road opposite unspoiled farmland views. The rear of the property fronts the road side with walled boundaries. Access is via a large gravelled driveway with turning circle providing substantial off road parking and leading to the double garage. There is a large block paved area leading to the front doors, as well as a large open lawned garden with well stocked and mature borders providing fantastic outdoor space and stunning open views to the side and rear.





**Tenure**

Believed to be Freehold, awaiting solicitors' formal confirmation.  
All interested parties are advised to make their own enquiries.

**Services**

All mains services are understood to be connected, however  
Crofts have not inspected or tested any of the services or service  
installations & purchasers should rely on their own survey.

**Viewings**

Please contact the relevant marketing office and all viewings are  
strictly by appointment only please.

**Council Tax Information**

Band G: To confirm council tax banding for this property please  
view the website [www.voa.gov.uk/cti](http://www.voa.gov.uk/cti)



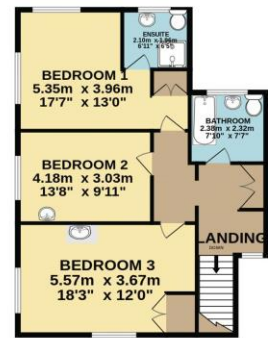
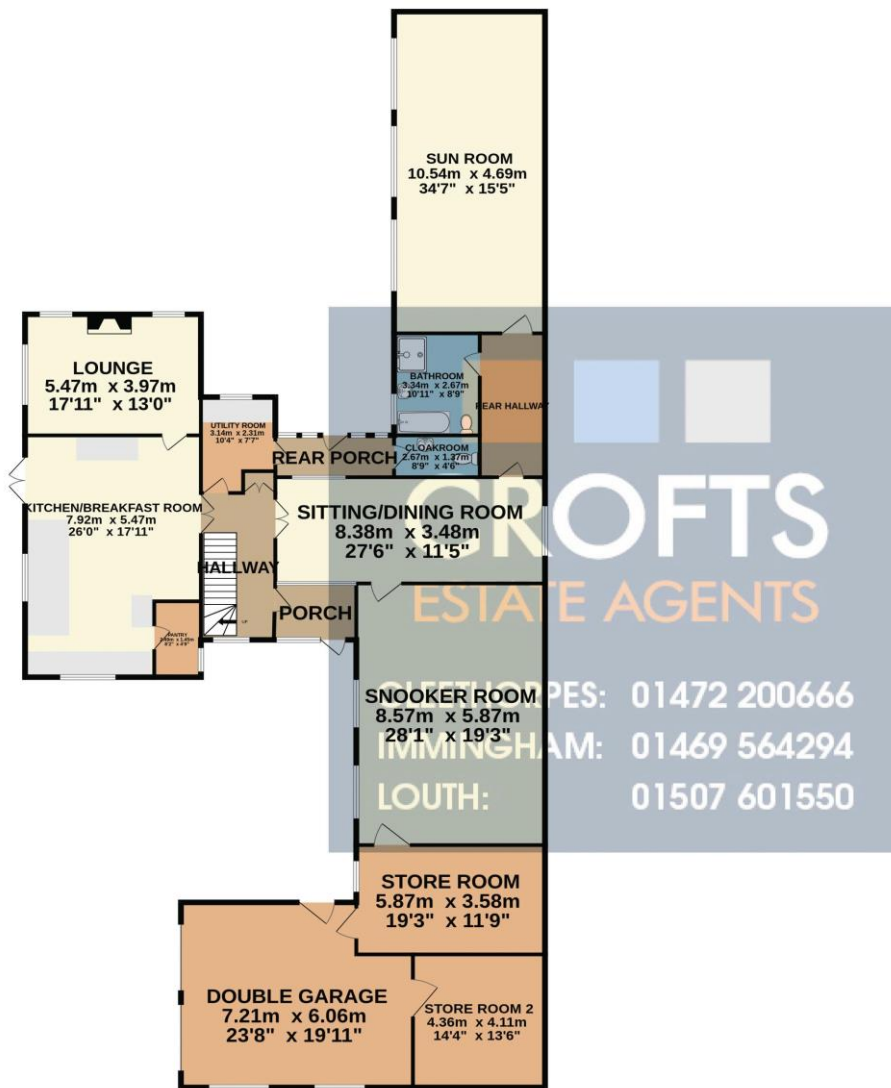


OPEN 7 DAYS A WEEK

Monday to Thursday	9am to 5.30pm (Tuesday opening 9.30am)
Friday	9am to 6.00pm
Saturday	9am to 3.00pm
Sunday	11am to 2.00pm (Louth & Immingham closed)

GROUND FLOOR  
322.9 sq.m. (3476 sq.ft.) approx.

1ST FLOOR  
73.5 sq.m. (791 sq.ft.) approx.



TOTAL FLOOR AREA : 396.4 sq.m. (4267 sq.ft.) approx.  
Whilst every attempt has been made to ensure the accuracy of the floorplan contained here, measurements of doors, windows, rooms and any other items are approximate and no responsibility is taken for any error, omission or mis-statement. This plan is for illustrative purposes only and should be used as such by any prospective purchaser. The services, systems and appliances shown have not been tested and no guarantee as to their operability or efficiency can be given.  
Made with Metropix ©2025

**DISCLAIMER - IMPORTANT NOTICE REGARDING SALES PARTICULARS** Although we have taken great care to insure the accuracy of the information contained in these particulars, we specifically deny liability for any mistakes, omissions or errors and strongly advise that all proposed purchasers should satisfy themselves by inspection or otherwise, as to their correctness, prior to entering into any commitment to purchase. In particular any information provided in respect of tenure, council tax, rateable values etc has been given in good faith and whilst believed to be correct, may be subject to amendment. Any references to the condition, use or appearance of the property are made for guidance only, and no warranties are given or implied by this information. It is not Crofts policy to check the position with regards to any planning permission or building regulation matters and as such all interested parties are advised to make their own enquires, in order to ensure that any necessary consents have been obtained. All measurements are approximate and are for guidance only and cannot be relied upon. Measurements are taken from wall to wall unless otherwise stated, with the metric conversion shown in brackets. Any plans or maps contained are for identification purpose only, and are not for any other use but guidance & illustration. Crofts have not tested any apparatus, equipment, fixtures, fittings or services including central heating systems and cannot therefore verify that they are in working order, or fit for their intended purpose. These details do not form any part of any contract, and unless specifically stated otherwise, furnishings and contents are not included within this sale.