



CROFTS ESTATE AGENTS

PASSIONATE ABOUT PROPERTY

CLEETHORPES
01472 200666

IMMINGHAM
01469 564294

LOUTH
01507 601550

SALES LETTINGS NEW HOME SALES LAND PROPERTY MANAGEMENT AUCTIONS FINANCIAL ADVICE AND MORTGAGES ENERGY PERFORMANCE PROVIDER



Wold View Kenwick Top Tathwell LN11 8QJ

**Offers in the Region Of
£550,000**

Standing on an elevated position, on the Lincolnshire Wolds, with far reaching and breathtaking views towards the coast and of Louth, this substantial and sympathetically extended white washed detached family property has no near neighbours and is arranged over two floors with stunning views and sits on an acre plot. Designed for modern day family living, the property offers an entrance porch, large hallway with octagonal room which would make a fabulous library, sitting room which opens to a fully fitted kitchen with dining room and conservatory off, a large first floor lounge with balcony terrace off, a further large cinema/playroom and good sized study off. The property has five or six bedrooms, five of which are large doubles, three bathrooms and the master having a dressing room. Lots of parking with a large detached carport and workshop, underground air raid shelter and large gardens which include paved, gravelled and decked terraced area, BBQ area, hot tub and a vegetable plot area. Viewing is essential and is by appointment only.

CLEETHORPES: 62 St Peters Avenue, Cleethorpes, DN35 8HP

IMMINGHAM: 21 Kennedy Way, Immingham, DN40 2AB

LOUTH: 3 Market Place, Louth, LN11 9NR

Email: Cleethorpes:

Email: Immingham :

Email: Louth :

info@croftsestateagents.co.uk

immingham@croftsestateagents.co.uk

louth@croftsestateagents.co.uk

www.croftsestateagents.co.uk



Location

The property stands at the top of Kenwick Hill and is accessed by its own road off Kenwick Hill, which leads to the gated entrance at the top of the no through road. The property fronts the A16 but is well screened and the property is setback.

The historic and well serviced market town of Louth is just a short drive away, which offers a full range of shopping, sporting and leisure activities, as well a well regard schools, including King Edward Grammar School. The nearby A16 provides easy access to all neighbouring towns and railway stations at Market Rasen and Skegness.

The Lincolnshire Coast is 20 minutes drive away.

Entrance Porch

To the front of the property with UPVC door leading to the lobby. Tiled floor.

Entrance Lobby

7' 7" x 3' 3" (2.3m x 1m)

Octagonal Room

8' 2" x 8' 2" (2.5m x 2.5m)

This room is used as a walk way between the lounge and main hallway and would make a great library or picture gallery. Downlighters to ceiling. Coving to ceiling.

Hallway

31' 6" x 5' 11" (9.6m x 1.8m) max

The hallway provides access to all the bedrooms and the first floor living space Downlighters to ceiling. Coving to ceiling. Radiator. Useful storage cupboard. Panelled doors lead to all internal rooms each having natural decor and attractive period cast iron style radiators.

Lounge

15' 9" x 13' 9" (4.8m x 4.2m)

Having dual aspect UPVC double glazed windows, a large brick exposed fireplace with log burner, fitted book case with storage cupboards under. Coving to ceiling. Radiator. Open arch leads into the kitchen.

Dining Room

9' 10" x 9' 2" (3m x 2.8m)

The dining room has an opening into the kitchen and doors leading into the conservatory. Coving to ceiling. Radiator. Large dresser style unit, matching the kitchen units. Tiles floor.

Conservatory

11' 6" x 10' 10" (3.5m x 3.3m)

A large conservatory with access to the paved and decked area with outdoor BBQ are, seating areas and hot tub. UPVC double glazed. Two radiators.

Kitchen

14' 5" x 12' 6" (4.4m x 3.8m)

An attractive and bespoke hand painted kitchen, being comprehensively fitted with a range of cream shaker style units, display units, shelving and dresser units with contrasting worksurfaces and splash back tiling incorporating a range cooker with extractor fan over, dishwasher and single drainer sink unit with mixer tap. UPVC glazed windows to the side elevation. Tilled floor. Radiator. Coving to ceiling.

Utility room/Rear entrance

Having side entrance door and JPVC double glazed window, this useful utility with storage cupboards and sink unit.

Cloakroom

Having UPVC double glazed window, wc and houses the boiler. Wall mounted cupboard. Plumbing for washing machine.

Bedroom 1

14' 5" x 13' 9" (4.4m x 4.2m)

A large master bedroom having a UPVC double glazed window overlooking the rear garden, radiator, coving to ceiling and wall light points. Open arch to dressing room and door to en-suite.

En-suite

9' 2" x 7' 7" (2.8m x 2.3m)

A large en-suite with fully fitted walls and floor having a white four piece suite comprising a walk in shower, pedestal wash basin, wc and bidet. Complimentary bathroom accessories Inc wall mounted mirror. Downlighters to ceiling. Radiator. UPVC double glazed window to the rear elevation.

Dressing Room

Previously the 6th bedroom, the dressing has a bespoke range of hand painted wardrobes to one wall with storage cupboards over and shelving. Fitted dressing table area. Radiator. UPVC double glazed window to the rear elevation.

Bedroom 2

Another good sized bedroom with UPVC double glazed window to the side elevation, coving to ceiling and radiator.

Bedroom 3

14' 1" x 11' 10" (4.3m x 3.6m)

A good size double bedroom with a fitted range of wardrobes and drawers to one wall, UPVC double glazed window to front elevation and radiator. Door to:-

En-suite No 2

9' 6" x 6' 7" (2.9m x 2m)

A large en-suite bathroom having a white suite comprising a panelled bath with shower and shower screen, bathroom cabinets incorporating a wash basin with mixer table and wc. Fully tiled walls and tiled floor. Downlighters to ceiling. UPVC double glazed window to the front elevation. Radiator and wall mounted electric heater.

Bedroom 4

11' 10" x 10' 10" (3.6m x 3.3m)

Another good sized double with a fitted range of wardrobes to either side of the bed recess with cupboards over. UPVC double glazed window to the front elevation. Radiator.

Bedroom 5

11' 10" x 11' 10" (3.6m x 3.6m)

A good sized double having UPVC double glazed window and radiator.

Family Bathroom

9' 2" x 7' 3" (2.8m x 2.2m)

Having a white suite comprising a free standing rolled edged bath with crawled feet and shower over, high flush wc, bidet and pedestal wash basin with mirror over. Fully tiled walls and floor. Radiator.

First Floor

The stairs provide access to a fabulous first floor suite of rooms, including a sitting room, cinema/playroom and study. This space makes a lovely and relaxing family living space which take advantage of the amazing views but the first floor could also make an teenage apartment or annexe.

Sitting Room

22' 4" x 14' 5" (6.8m x 4.4m)

A large sitting room with recessed lighting to the sloping ceiling, two radiators and UPVC double glazed French doors lead to a tiled balcony terrace with magnificent views of both Louth and towards the Lincolnshire coast.

Study

14' 5" x 7' 10" (4.4m x 2.4m)

A good sized office having again sloping ceiling with recessed light and UPVC double glazed window over looking the front garden.



Cinema Room/Playroom

26' 11" x 13' 5" (8.2m x 4.1m)

A fabulous room with plenty of room having two roof windows, sloping ceilings with recessed lighting, radiators and lots of eaves storage.

Outbuildings

The property has a detached car port and workshop block with light and power. Hidden under a trap door is access to the old air raid shelter. Detached storage unit.

Outside

A gated entrance off the country lane provide access to a huge tarmac driveway with turning circle to the front. The front gardens are wooded, which provide screening from the road and have been designed to be low maintenance. The grounds wrap all around the property with a paved terraces area to one side and a vegetable garden and plot to the other side with greenhouse.

To the rear is a large entertaining space on different levels, having paved, gravelled and decked areas which provide a great space to admire the stunning scenery over a BBQ lunch or even from the hot tub. The rear garden is fenced with an extensive lawn, which has potential to create a paddock or even further outbuilding with a secondary gated access, if required.

Services

Mains electricity is connected. Water is via its own bore hole and drainage is to a septic tank. Oil storage tank provides the power to the boiler.

Tenure

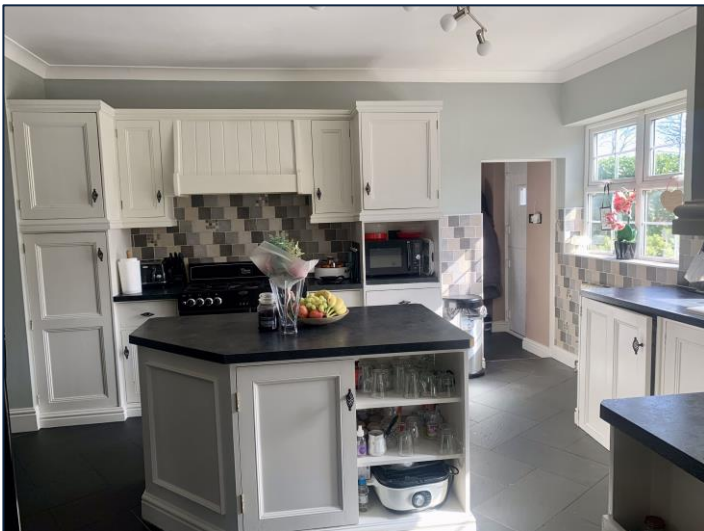
Believed to be Freehold, awaiting solicitors' formal confirmation. All interested parties are advised to make their own enquiries.

Viewings

Please contact the relevant marketing office and all viewings are strictly by appointment only please.

Council Tax Information

Band C: To confirm council tax banding for this property please view the website www.voa.gov.uk/cti





OPEN 7 DAYS A WEEK

Monday to Thursday 9am to 5.30pm (Tuesday opening 9.30am)
Friday 9am to 6.00pm
Saturday 9am to 3.00pm
Sunday 11am to 2.00pm (Louth & Immingham closed)



DISCLAIMER - IMPORTANT NOTICE REGARDING SALES PARTICULARS Although we have taken great care to insure the accuracy of the information contained in these particulars, we specifically deny liability for any mistakes, omissions or errors and strongly advise that all proposed purchasers should satisfy themselves by inspection or otherwise, as to their correctness, prior to entering into any commitment to purchase. In particular any information provided in respect of tenure, council tax, rateable values etc has been given in good faith and whilst believed to be correct, may be subject to amendment. Any references to the condition, use or appearance of the property are made for guidance only, and no warranties are given or implied by this information. It is not Crofts policy to check the position with regards to any planning permission or building regulation matters and as such all interested parties are advised to make their own enquires, in order to ensure that any necessary consents have been obtained. All measurements are approximate and are for guidance only and cannot be relied upon. Measurements are taken from wall to wall unless otherwise stated, with the metric conversion shown in brackets. Any plans or maps contained are for identification purpose only, and are not for any other use but guidance & illustration. Crofts have not tested any apparatus, equipment, fixtures, fittings or services including central heating systems and cannot therefore verify that they are in working order, or fit for their intended purpose. These details do not form any part of any contract, and unless specifically stated otherwise, furnishings and contents are not included within this sale.

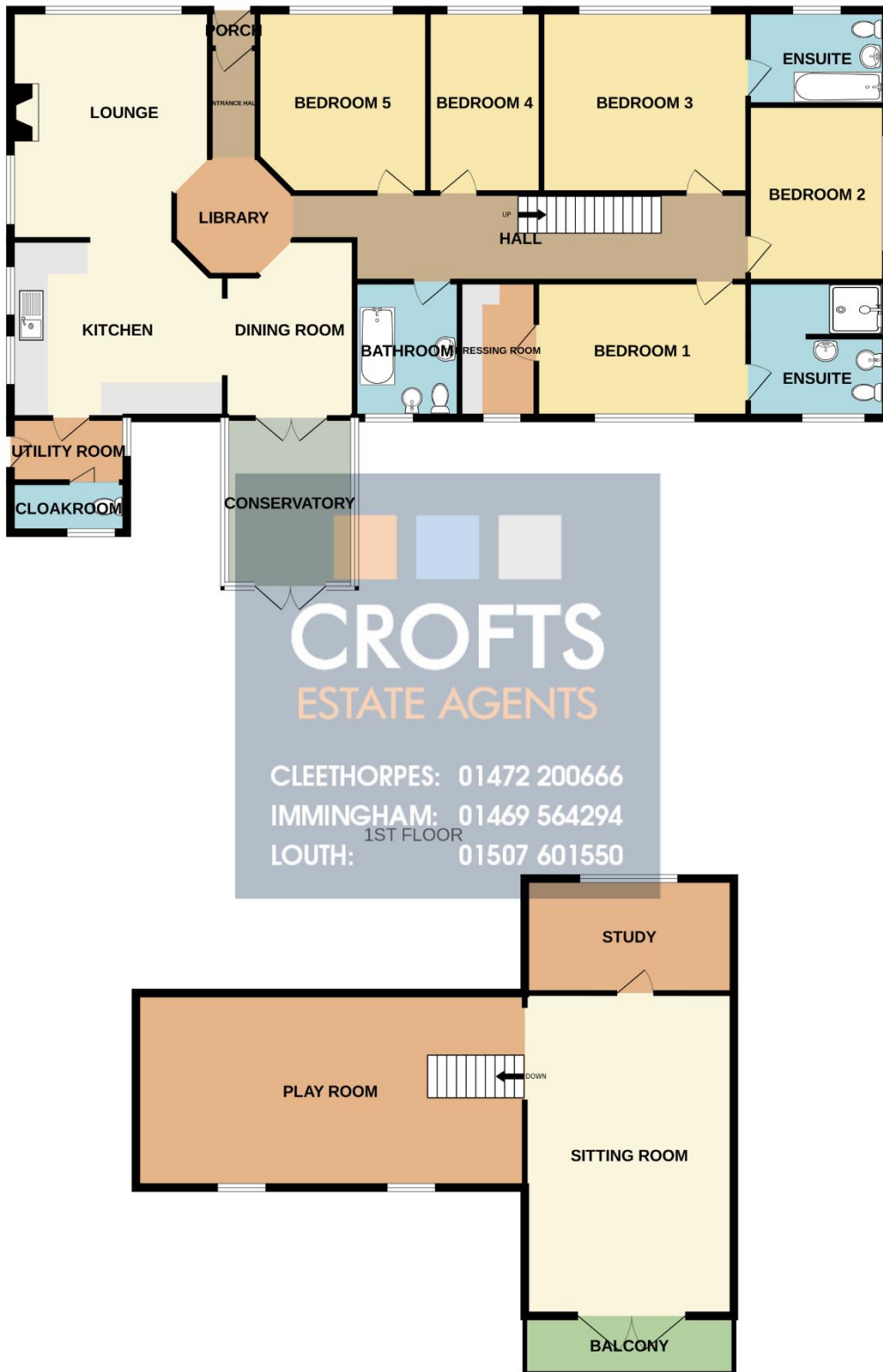


| Energy Efficiency Rating | | |
|---|----------------------------|-----------|
| | Current | Potential |
| Very energy efficient - lower running costs | | |
| (92+) A | | |
| (81-91) B | | 83 |
| (69-80) C | | |
| (55-68) D | 66 | |
| (39-54) E | | |
| (21-38) F | | |
| (1-20) G | | |
| Not energy efficient - higher running costs | | |
| England & Wales | EU Directive 2002/91/EC | |

WWW.EPC4U.COM

DISCLAIMER - IMPORTANT NOTICE REGARDING SALES PARTICULARS Although we have taken great care to insure the accuracy of the information contained in these particulars, we specifically deny liability for any mistakes, omissions or errors and strongly advise that all proposed purchasers should satisfy themselves by inspection or otherwise, as to their correctness, prior to entering into any commitment to purchase. In particular any information provided in respect of tenure, council tax, rateable values etc has been given in good faith and whilst believed to be correct, may be subject to amendment. Any references to the condition, use or appearance of the property are made for guidance only, and no warranties are given or implied by this information. It is not Crofts policy to check the position with regards to any planning permission or building regulation matters and as such all interested parties are advised to make their own enquires, in order to ensure that any necessary consents have been obtained. All measurements are approximate and are for guidance only and cannot be relied upon. Measurements are taken from wall to wall unless otherwise stated, with the metric conversion shown in brackets. Any plans or maps contained are for identification purpose only, and are not for any other use but guidance & illustration. Crofts have not tested any apparatus, equipment, fixtures, fittings or services including central heating systems and cannot therefore verify that they are in working order, or fit for their intended purpose. These details do not form any part of any contract, and unless specifically stated otherwise, furnishings and contents are not included within this sale.

GROUND FLOOR



Whilst every attempt has been made to ensure the accuracy of the floorplan contained here, measurements of doors, windows, rooms and any other items are approximate and no responsibility is taken for any error, omission or mis-statement. This plan is for illustrative purposes only and should be used as such by any prospective purchaser. The services, systems and appliances shown have not been tested and no guarantee as to their operability or efficiency can be given.
Made with Metropix ©2024