



Grosvenor Road, SW1V

£1,600,000

This three double bedroom, three bathroom apartment is set within a well maintained purpose-built block with the benefit of a concierge. Accessed via the ground floor, the apartment itself is arranged on the first floor and offers generous living space. This apartment has a large open plan kitchen/living space with access onto a private balcony with direct river views.

Features

- Three Bedrooms
- Three Bathrooms
- Private Balcony
- River Views
- Underground Parking
- Concierge

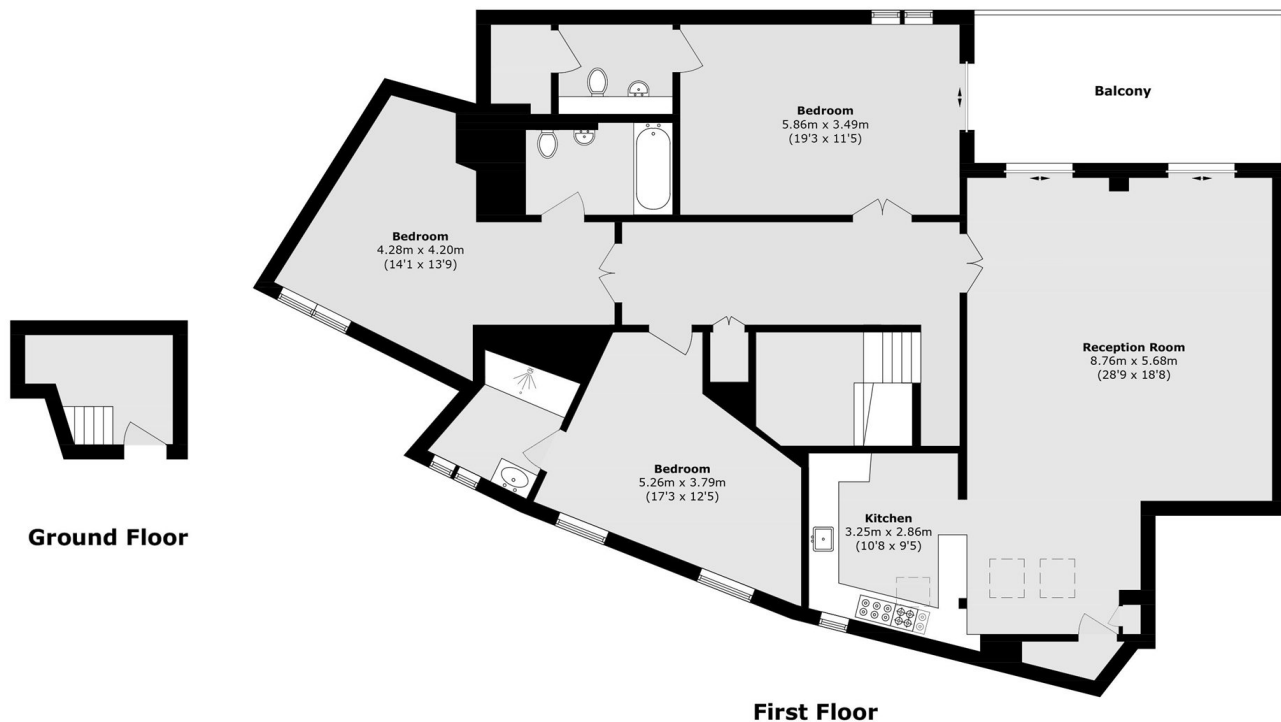


Grosvenor Road, SW1V

Crown Reach is positioned alongside The Thames, there are good transport links with Pimlico tube and Vauxhall mainline and tube nearby and Pimlico offers a variety of shops and restaurants.



Grosvenor Road, London, SW1V



Total area (approx.): 146.7 sq. m (1579.0 sq. ft)

Balcony area (approx.): 15.2 sq. m (163.6 sq. ft)

Dexters

Westminster
50 Churton Street
London
SW1V 2LP
Sales
020 7590 9570

Energy Rating: B. We aim to make our particulars both accurate and reliable. However they are not guaranteed; nor do they form part of an offer or contract. If you require clarification on any points then please contact us, especially if you're traveling some distance to view. Please note that appliances and heating systems have not been tested and therefore no warranties can be given as to their good working order.

 **RICS** | Regulated
Estate Agent
and Letting Agent

[dexters.co.uk](https://www.dexters.co.uk)